



Flat

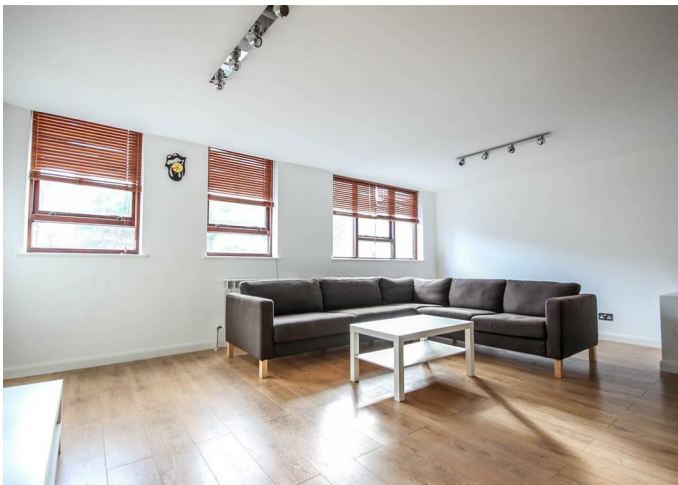
3, TORRIANO MEWS, NW5 2RZ

Per Calendar
£2,550

Available: 19th September 2024

FEATURES

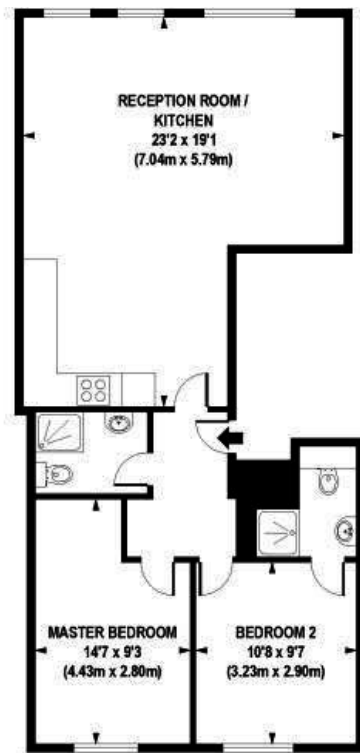
- Two Double Bedroom Brand New Apartment
- Two Bathrooms
- Very Large Open Plan Living Room
- High Spec Throughout
- Solid Wood Flooring
- Minutes to Kentish Town Underground Station (Northern Line)
- Minutes to Tufnell Park Underground Station (Northern Line)
- Offered Furnished or Unfurnished



Huddletons

2 Bedroom Flat located in London

A superb and very large two double bedroom, two bathroom first floor flat set in a spaciouly converted building tucked away in a private mews within a short distance from Kentish Town Underground Station Northern Line) and Tufnell Park.



FIRST FLOOR

APPROX. GROSS INTERNAL FLOOR AREA 723 sq. ft / 67.15 sq. m

Floorplan is for illustrative purposes only and is not to scale.
Every attempt has been made to ensure the accuracy of the floorplan shown, however all measurements, fixtures, fittings and data shown are an approximate interpretation for illustrative purposes only.
Liability for errors, omissions or mis-statements through negligence or otherwise is hereby excluded.

Call us on

0207 205 4411

info@huddletons.com

<http://www.huddletons.com>

Council Tax Band

C

Energy Efficiency Rating		
	Current	Potential
Very energy efficient - lower running costs		
(92 plus) A		
(81-91) B		
(69-80) C	75	78
(55-68) D		
(39-54) E		
(21-38) F		
(1-20) G		
Not energy efficient - higher running costs		
England & Wales	EU Directive 2002/91/EC	

Agents Note: Whilst every care has been taken to prepare these particulars, they are for guidance purposes only. All measurements are approximate and are for general guidance purposes only and whilst every care has been taken to ensure their accuracy, they should not be relied upon and potential buyers are advised to recheck the measurements.

Huddletons