



Studio

56-58, CROWDALE ROAD, NW1 1TP

Per Calendar
£1,890

Available: 20th September 2024

FEATURES

- Large Studio
- Freestanding Shower
- Moments from Mornington Tube
- Communal Gardens
- Separate Kitchen
- Hard Floors Throughout
- £100pcm Utilities (Gas, Electric, Water)
- WC



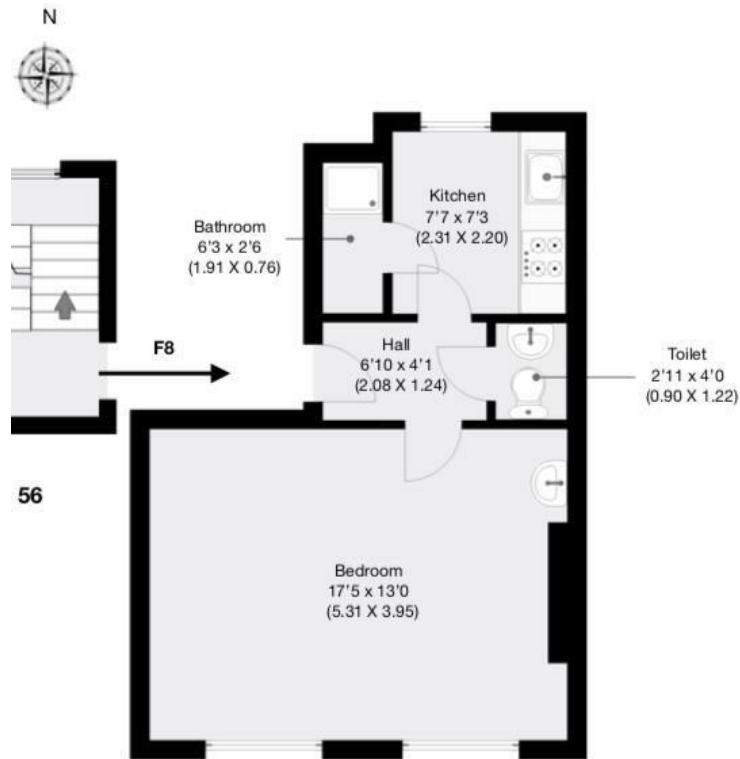
Huddletons

null Bedroom Studio located in London

Huddletons are pleased to offer this fantastic double studio apartment set in a period building moments from Mornington Crescent Underground Station (Northern Line) and King's Cross International

£100 per month for gas, electric and Water.

The property is set on the second floor of a well maintained period building and benefits from a large bedroom/lounge, a separate kitchen and a shower room together with use of a communal garden. Perfect for a single professional, couple or a student.



Approximate Gross Internal Area
39 sqm / 420 sqft

Call us on

0207 205 4411

info@huddletons.com

<http://www.huddletons.com>

Council Tax Band

C

Energy Efficiency Rating		Current	Potential
<i>Very energy efficient - lower running costs</i>			
(92 plus)	A		
(81-91)	B		
(69-80)	C	69	76
(55-68)	D		
(39-54)	E		
(21-38)	F		
(1-20)	G		
<i>Not energy efficient - higher running costs</i>			
England & Wales		EU Directive 2002/91/EC	

Agents Note: Whilst every care has been taken to prepare these particulars, they are for guidance purposes only. All measurements are approximate and are for general guidance purposes only and whilst every care has been taken to ensure their accuracy, they should not be relied upon and potential buyers are advised to recheck the measurements.

Huddletons