



14 St Johns Hill, Tenby

£272,500

[www.chandlerrogers.co.uk](http://www.chandlerrogers.co.uk)

  
CHANDLER ROGERS  
ESTATE AGENTS



## 14 St Johns Hill, Tenby

This immaculate, cosy terraced cottage is conveniently situated in the heart of Tenby, being within a short walk of the beach, shops, restaurants and amenities. The recently refurbished, tastefully decorated accommodation comprises Lounge, Kitchen, Bathroom and Two Bedrooms. Parking is available with a residents permit parking. The property would make an ideal investment or suit a First Time Buyer, or someone looking to downsize.







## THE PROPERTY

This immaculate, cosy terraced cottage is conveniently situated in the heart of Tenby, being within a short walk of the beach, shops, restaurants and amenities. The recently refurbished, tastefully decorated accommodation comprises Lounge, Kitchen, Bathroom and Two Bedrooms. Parking is available with a residents permit parking. The property would make an ideal investment or suit a First Time Buyer, or someone looking to downsize.

### LOUNGE

3.24m x 3.95m (10'7" x 12'11")

Enter the property via a solid wood door into the bright and airy lounge. With a window to the front. Open-plan access to the kitchen. Oak door to under stairs cupboard. Stairs to first floor.

### KITCHEN

3.11m x 2.86m (10'2" x 9'4")

Modern well equipped kitchen fitted with a range of wall and base units, with co-ordinating marble effect worktop. Integral oven and induction hob with extractor over, microwave, washing machine. Composite sink and drainer with mixer tap. Glazed door to rear courtyard. Tiled flooring. Recessed ceiling spotlights. Breakfast bar with 4 seats.









## BEDROOM ONE

4.09m x 2.82m (13'5" x 9'3")

Lovely bright L-shaped room with storage area and beautiful internal stained glass window overlooking the staircase. Two windows to the front.

## BEDROOM TWO

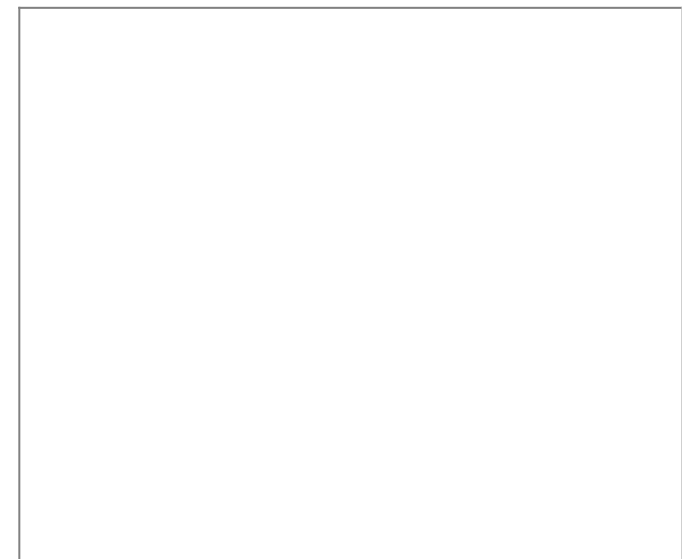
3.1m x 2.36m (10'2" x 7'8")

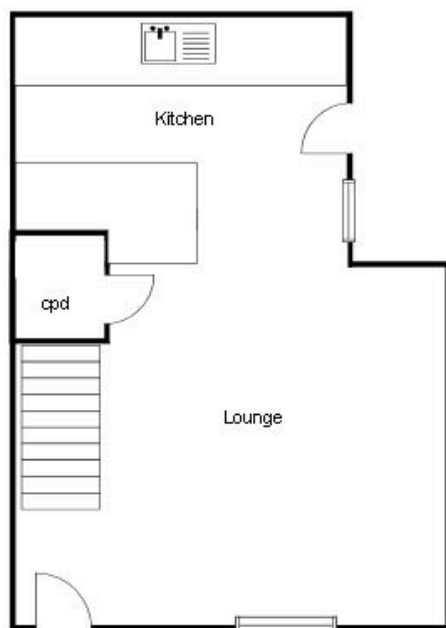
Window to the rear.

## BATHROOM

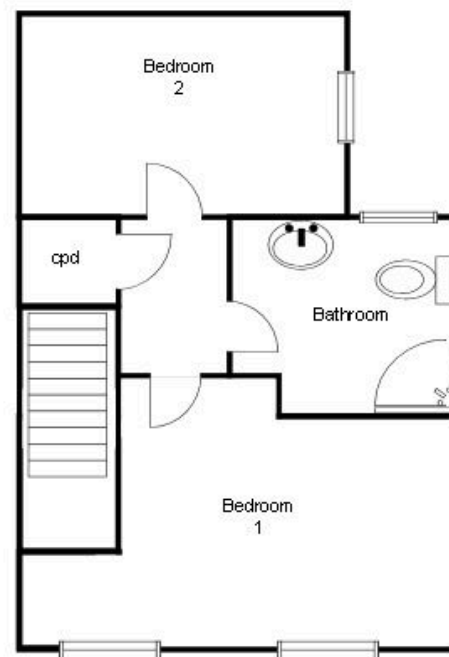
2.16m x 1.89m (7'1" x 6'2")

Frosted window to the rear. Close coupled WC and matching wash-hand vanity unit, with illuminated mirror. Oval shower glazed enclosure with mains connected waterfall shower and tiled walls. Heated towel rail. Tiled flooring.





Ground Floor  
For illustrative purposes only, not to scale.



First Floor  
For illustrative purposes only, not to scale.