

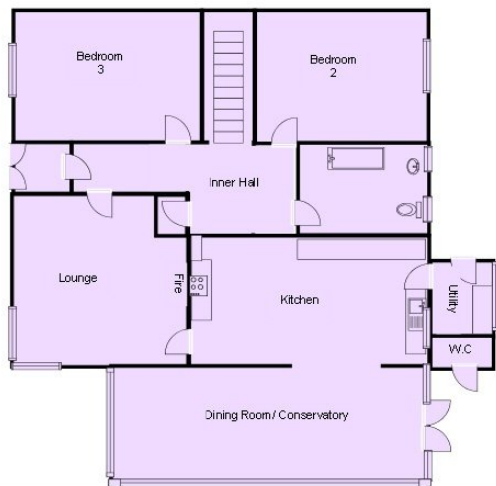
Pen Y Daith, Pleasant Valley

Offers Over £500,000

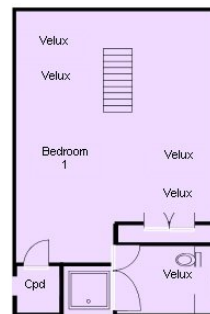
3 2 2



- Detached House
- Bathroom and Ensuite
- Patio with Hot Tub
- Successful Holiday Let
- Three Double Bedrooms
- Five Minute Walk to Wisemans Bridge
- Garden and Off Road Parking
- EER - D



Ground Floor
For illustrative purposes only, not to scale.



First Floor
For illustrative purposes only, not to scale.

Pen Y Daith is situated in the popular village of Pleasant Valley, within easy walking distance to the coast at Wisemans Bridge and the famous resort of Saundersfoot which offers beautiful sandy beaches and a working harbour. It is next door to Pen Coed & The Cwtch and there is potential to purchase as one transaction, which would allow a range of commercial or domestic possibilities. The property has been lovingly renovated and extended and the accommodation comprises of Lounge, Kitchen, Conservatory/Dining Room, Two Bedrooms and Bathroom on the ground floor. On the First floor there is a large Bedroom with Ensuite. Externally to the front there



is s gravelled parking area, Steps lead up to the side of the property with a lovely lawned area. There is a large split level balcony with hot tub offering views of the valley. Underneath the house there is also a games room. Pen Y Daith is presently run as a successful holiday let business.