



9 Pentle Drive, Pentlepoir

Offers In Region Of £339,000

[www.chandlerrogers.co.uk](http://www.chandlerrogers.co.uk)

## 9 Pentle Drive, Pentlepoir

Chandler Rogers are excited to introduce this beautiful DECEPTIVELY SPACIOUS 3 bedroom, 2 bathroom Family home nestled between two beautiful seaside resorts, Tenby and Saundersfoot. This quirky property really is a tardis and needs to be seen to be appreciated! Briefly comprising of a large kitchen/diner with access to a BEAUTIFUL SUNNY GARDEN to the rear, double bedroom and family bathroom on the ground floor. The first floor offering a substantial bright and airy lounge, beautiful hallway and store room which could, with the right permissions be converted to another living space. The 2nd floor occupies 2 further double bedrooms and a bathroom. The property also benefits from gas central heating and uPVC double glazing throughout.

Pentlepoir itself also benefits from the newly made, safe public footpath, which takes you from the village, right in to the heart of Saundersfoot.





## THE PROPERTY

Chandler Rogers are excited to introduce this beautiful **DECEPTIVELY SPACIOUS** 3 Bedroom, 2 Bathroom Family home nestled between two beautiful seaside resorts, Tenby and Saundersfoot. This quirky property really is a Tardis and needs to be seen to be appreciated! Briefly comprising of a large kitchen/diner with access to a **BEAUTIFUL SUNNY GARDEN** to the rear, double bedroom and family bathroom on the ground floor. The first floor offering a substantial bright and airy lounge, beautiful hallway and store room which could, with the right permissions be converted to another living space. The 2nd floor occupies 2 further double bedrooms and a bathroom. The property also benefits from gas central heating and uPVC double glazing throughout.

Pentlepoir itself also benefits from the newly made, safe public footpath, which takes you from the village, right in to the heart of Saundersfoot.



## Entrance Hall

Enter through a frosted uPVC double glazed front door into a very attractive entrance hallway with Karndean flooring and feature staircase to both ground and upper floor. Doors to the living room and store room.

## Living Room

5.76m x 4.72m (18'10" x 15'5")



## Kitchen/Diner

7.89m x 2.96m (25'10" x 9'8")

The spacious kitchen/diner occupies the ground floor and leads directly on to the sunny garden through double glazed uPVC doors, perfect for those summer gatherings with family and friends.

Includes a modern range floor and wall mounted units with co-ordinating black worktop, tiled splashback, Inset composite sink and drainer with mixer tap, range cooker with extractor fan overhead, ceiling spot lights & lovely travertine tiled floor throughout.

## Bedroom 1

4.94m x 2.62m (16'2" x 8'7")

Window to rear with pleasant views, cupboard & radiator.



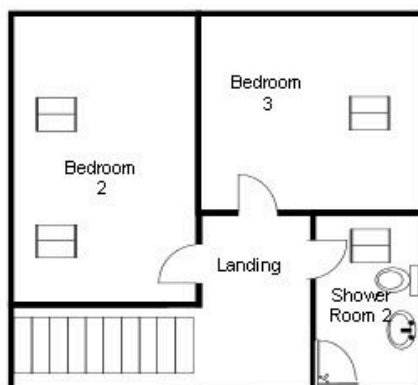
## Shower Room 1

2.83m x 1.73m (9'3" x 5'8")

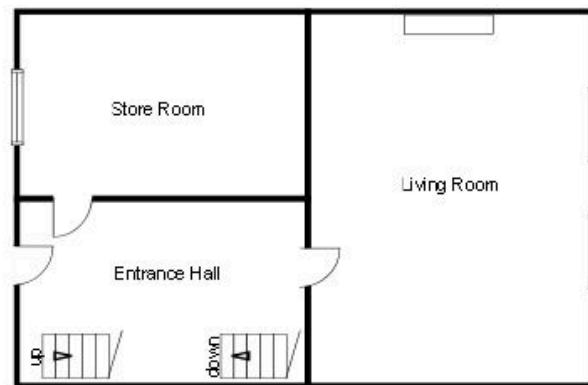
Stylish family bathroom with part tiled walls and decorative tiled floor, large shower with slate effect shower wall, wash hand basin with vanity surround, WC & radiator.



Second Floor  
For illustrative purposes only, not to scale.



First Floor  
For illustrative purposes only, not to scale.



Ground Floor  
For illustrative purposes only, not to scale.

