



Fonthill, Sandyhill Road, Saundersfoot

Offers In Region Of £470,000

www.chandlerrogers.co.uk

Fonthill, Sandyhill Road, Saundersfoot





THE PROPERTY

Fonthill is a stunning detached residence situated in a much sought after location overlooking the popular seaside village of Saundersfoot. The bungalow is immaculate throughout, and from it's elevated position enjoys beautiful countryside and coastal views over Saundersfoot Bay and beyond towards the Preseli Hills. The bright and spacious accommodation briefly comprises Porch, Hall, Lounge, Kitchen/Dining Room, Rear Porch, Utility, Three Double Bedrooms (Two having En Suite Shower Rooms and one with a Dressing Area) and a Family Bathroom. Externally there are beautiful Mediterranean style low maintenance gardens to the front and rear, with mature shrubs and flowering plants, a choice of paved and decked seating areas and a Garden Room. Ample off road parking is available on a large driveway, and plentiful storage in the integral garage. Fonthill is an ideal family home or investment property due to it's proximity to Saundersfoot Village Centre, the coastal path and the working harbour and famous beaches, with schools of all levels close by. Early viewing is highly recommended.



Porch

Enter through glazed uPVC door with sidelites into Porch. Hardwood glazed door with frosted sidelites to Hall

Hall

Doors to various rooms. Door to airing cupboard. Oak flooring.



Lounge

5.87m x 4.41m (19'3" x 14'5")

Bay windows to front and side enjoying unrivalled sea, coastal and countryside views over Saundersfoot Bay and beyond towards the Preseli's. Inset gas flame effect fireplace with marble surround. Oak flooring.

Kitchen/Dining Room

6.81m x 3.57m (22'4" x 11'8")

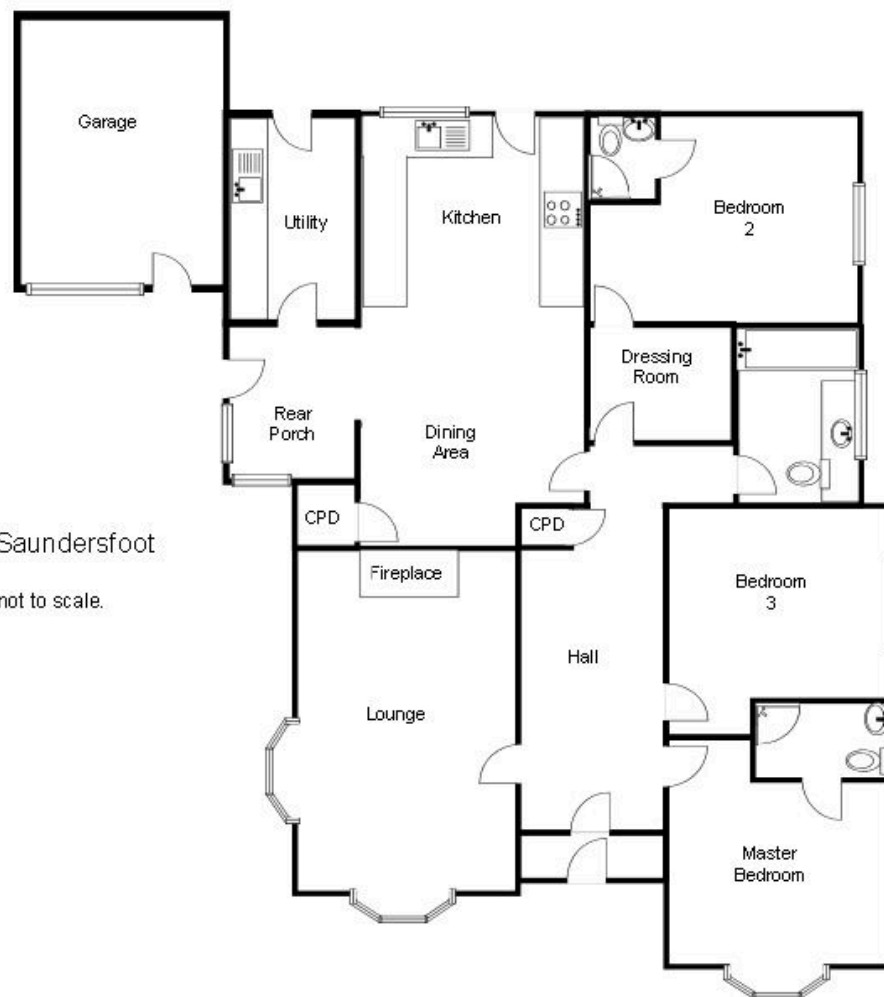
Window and glazed uPVC door to rear leading to the garden. Opening to Rear Porch. The Kitchen is fitted with a range of modern country style wall and base units with matching quartz worktop extending to splash backs. Inset 1.5 stainless steel sink and drainer with mixer tap over. Space and connection for electric Aga range cooker with corresponding extractor hood over, American style fridge freezer and dishwasher. Ample space for large family sized dining suite. Tiled floor. Cupboard housing wall mounted Vaillant gas combi boiler.



Rear Porch

Glazed door to side leading to the driveway. Windows front and side with beautiful views. Tiled floor. Door to Utility Room.





Fonthill, Sandyhill Rd, Saundersfoot

For illustrative purposes only, not to scale.