



Maytree Cottage, The Burrows, Tenby

Offers In Region Of £475,000

w w w . c h a n d l e r r o g e r s . c o . u k



Maytree Cottage, The Burrows, Tenby





THE PROPERTY

This fantastic detached house is situated in a wonderful location overlooking Tenby's popular golf course and within yards of the golden sands of the South Beach. The spacious and well appointed accommodation comprises Porch, Living Room, Lounge/Dining Room, Utility, Kitchen and Bathroom on the Ground Floor, and Four Bedrooms, Master with En-Suite and separate Family Bathroom on the First Floor. A paved patio to the side and a raised deck to rear provides outside seating space, and the property also enjoys the use of the lawned area at the front. This sought after location makes the property ideal as a family home, holiday home or let. The town centre, additional beaches and pretty harbour area are approximately 600 yards away.

ENTRANCE PORCH

Enter through glazed hardwood door into Porch. Window to front. Door to Living Room



Living Room

5.76m x 3.99m (18'10" x 13'1")

Double aspect with windows to front and side. Brick fireplace housing gas coal effect fire. Stairs to First Floor. Door to Lounge/Dining Room.



Lounge/Dining Room

5.76m x 3.99m (18'10" x 13'1")

Two windows to front. Wall mounted gas fire with back boiler. Built-in cupboard housing electric hot water cylinder. Opening to Kitchen. Door to Utility cupboard. Ample space for family sized lounge and dining suites. Tiled floor.

Utility Cupboard

Very large cupboard at the rear with space and connection for washing machine and tumble dryer/freezer.

Kitchen

Window to front with views over the golf course. Fitted with a range of base and wall units with matching worktop. Inset 1.5 composite sink and drainer with mixer tap. Space and connection for dual fuel cooker with extractor over. Integral dishwasher. Space and connection for under counter fridge. Part tiled walls. Tiled floor. Stable door to side garden. Door to Bathroom.



Bathroom

Window to rear. Fitted with matching suite comprising bath with mixer shower attachment, WC and pedestal wash hand basin. Part tiled walls. Tiled floor. Extractor.

First Floor Landing

Window to rear. Door to airing cupboard. Doors to various rooms. Unique bespoke "cwtch" bunk bed.

Master Bedroom

5.58m x 3.55m (18'3" x 11'7")

Very generous Double Bedroom with a window to front. Door to En-Suite Shower Room.



En Suite Shower Room

Frosted window to rear. Fitted with matching suite comprising WC, wash hand basin, and mains shower in glazed enclosure. Part tiled walls. Tiled floor.

Bedroom 2

3.12m x 2.44m (10'2" x 8'0")

Window to front.

Bedroom 3

3.18m x 2.16m (10'5" x 7'1")

Window to front. Shelved alcoves.





Bedroom 4

3.35m x 3.02m (10'11" x 9'10")

Window to front with lovely views over the golf course. Two built-in wardrobes.

Bathroom

Window to front. Furnished with bath, pedestal wash hand basin and WC. Shelves alcoves. Part tiled walls. Tiled floor.

Externally

A paved patio to the side of the property provides outside seating space ideal for barbeques, with additional seating offered on a raised timber deck at the rear. A large shed with a pitched roof provides storage for all your beach paraphernalia. At the other side is a gated driveway, with a further shed and a charming children's play area modelled on a pirate ship built at the back of the house. Additional parking for several vehicles is provided on the gravelled area at the front of the house. Maytree Cottage



Property Information

We are advised the property is Freehold, with all mains services connected.

Gas fired central heating provided by a back boiler. Electric immersion heater provides hot water.

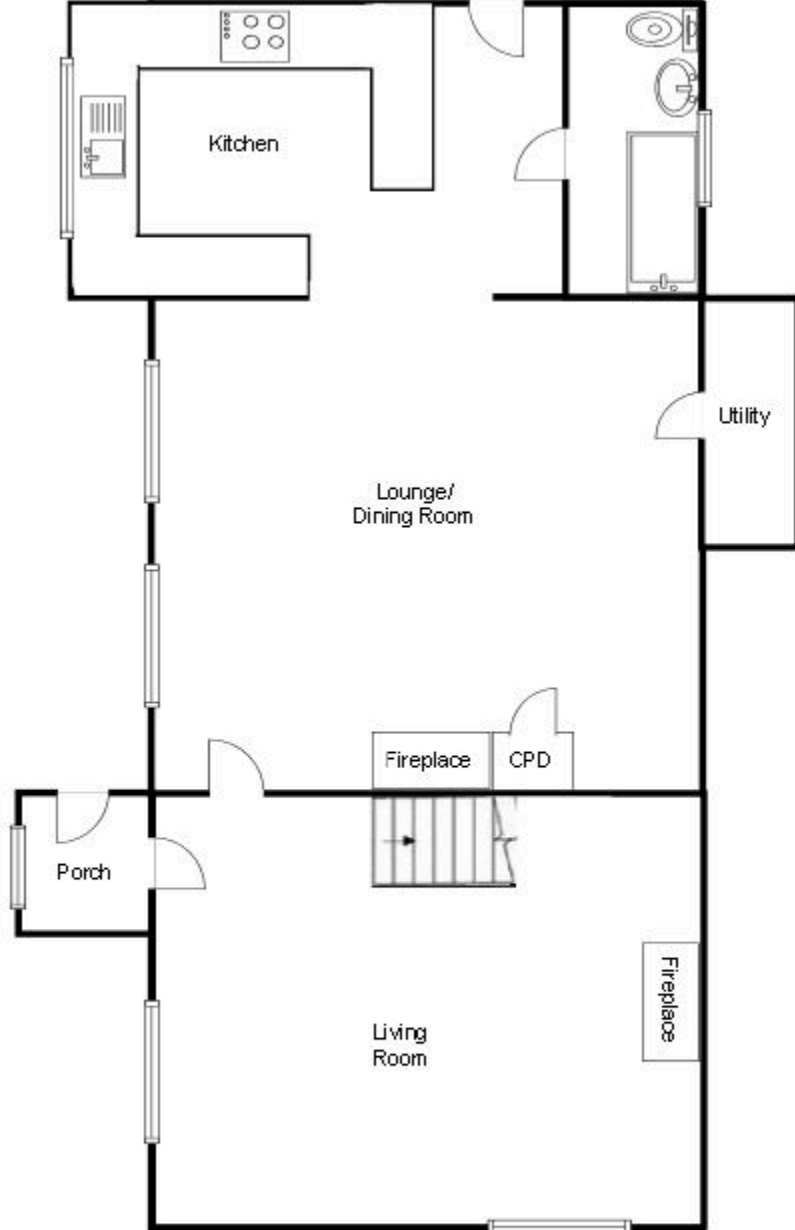
The Burrows is a private road. It is a public right of way by foot, but public vehicles are prohibited.

Directions

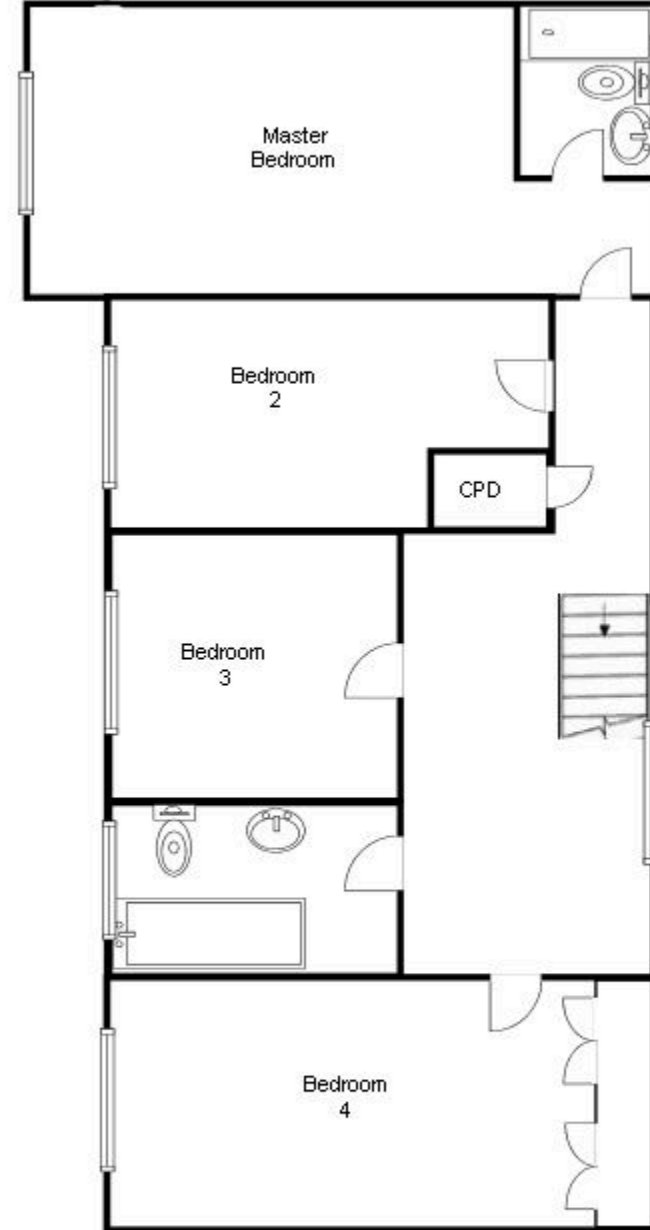
From our Tenby office proceed to South Beach. Continue down the access road to the beach and on reaching the bottom turn right through the five bar gate to the private road. May Tree is the first house on the right.







Ground Floor
For illustrative purposes only, not to scale.



First Floor
For illustrative purposes only, not to scale.