



Flat 2 Harbour Reach

Offers In Region Of £220,000

www.chandlerrogers.co.uk



Flat 2 Harbour Reach

This property is a maisonette which comprises of a Lounge/Diner, Kitchen and Bathroom on the First Floor and Two Double Bedrooms, and WC on the Second Floor. This property is an ideal investment as the location is set within Saundersfoot village with its beaches and amenities and the property is to be sold fully furnished as a going concern. There are many character features within the property, pitched ceilings and alcoves which are ideal for storage. The property is accessed via a communal well kept and secure lobby.





THE PROPERTY

This property is a maisonette which comprises of a Lounge/Diner, Kitchen and Bathroom on the First Floor and Two Double Bedrooms, and WC on the Second Floor. This property is an ideal investment as the location is set within Saundersfoot village with its beaches and amenities and the property is to be sold fully furnished as a going concern. There are many character features within the property, pitched ceilings and alcoves which are ideal for storage. The property is accessed via a communal well kept and secure lobby.

Hallway

Enter through hardwood door into a spacious hallway. Doors to various rooms. Door to large storage cupboard with integral shelving. Stairs to first floor, with cupboard.

Lounge/Diner

5.66m x 5.05m (18'7" x 16'7")

Bright and airy Lounge/Diner with two windows to the front. Space and connection for electric fireplace with attractive alcove shelving above. Integral storage and shelving opposite. Ample size for lounge set and family size dining suite. Laminate flooring.





Kitchen

3.35m x 2.13m (11'0" x 7'0")

Modern and bright Kitchen fitted with a range of matching base and wall units and a matching worktop. Large window to the side. Integral stainless steel sink and drainer with mixer tap. Integral electric oven, with 4-ring gas hob and extractor hood over. Space and connection for washing machine and fridge freezer. Cupboard housing wall mounted i-mini combi gas boiler. Part tiled wall. Vinyl flooring.

Bathroom

Bright and modern bathroom fitted with matching suite comprising pedestal wash-hand basin and WC. Mains shower within glazed enclosure. Vinyl flooring. Water resistant shower panelling.

Bedroom 1

3.35m x 3.05m (11'0" x 10'0")

Bright double bedroom with window to the front, providing harbour views.



Bedroom 2

3.35m x 2.44m (11'0" x 8'0")

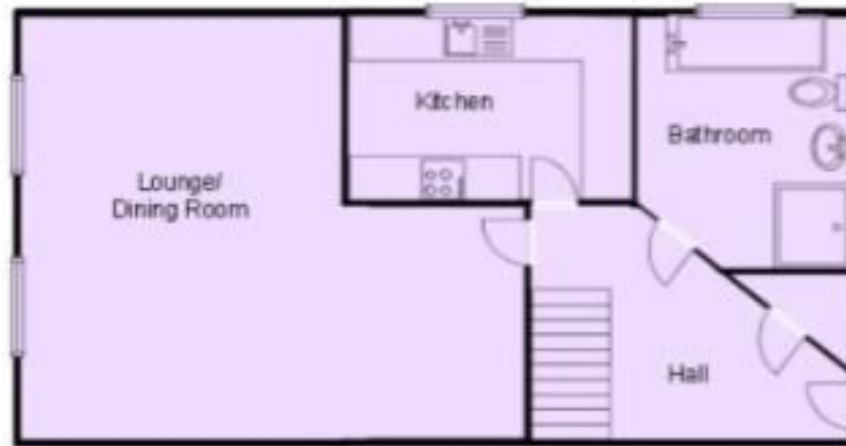
Bright double bedroom with window to the front providing Harbour views.

WC

Fitted with matching wall mounted wash hand basin and WC. Eaves access.







Flat 2
First Floor
For illustrative purposes only, not to scale.



Flat 2
Second Floor
For illustrative purposes only, not to scale.