



Rosemay, Valley Road, Saundersfoot

Offers In Region Of £265,000

www.chandlerrogers.co.uk

CHANDLER ROGERS
ESTATE AGENTS

Rosemay, Valley Road, Saundersfoot

Rosemay is a Deceptively Spacious Semi-Detached Bungalow, situated on the outskirts of the popular resorts of Tenby and Saundersfoot, offering beautifully presented accommodation comprising Hall, Lounge, Kitchen/Dining Room, Utility, Two Double Bedrooms and Bathroom on the Ground Floor, and on the First Floor in the converted attic a Living Room and a Loft Room currently used as a Third Double Bedroom. To the front is a low maintenance garden and driveway, providing off road parking for up to three vehicles. At the rear is an enclosed, raised garden with decking and patio area, ideal for al fresco dining, and also a detached two Bedroom, one Bathroom self contained annex ideal for multi-generational living, or to let out to provide an income. The property benefits from electric heating and uPVC double glazing throughout. The lovely sandy beaches, working harbour, shops, restaurants, etc are all a short distance away.





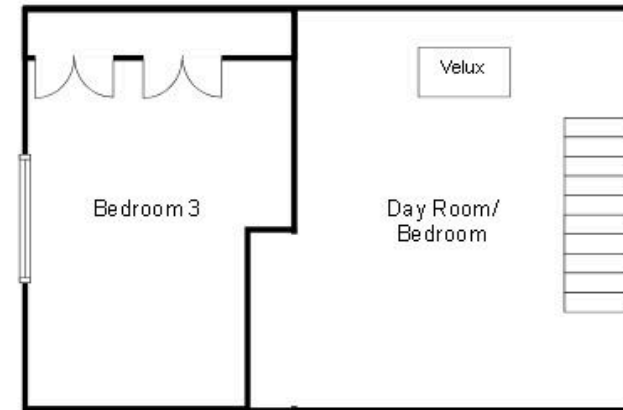








Ground Floor
For illustrative purposes only, not to scale.



First Floor
For illustrative purposes only, not to scale.