



2 Seaview, Wisemans Bridge

Offers In Region Of £499,950

www.chandlerrogers.co.uk

CHANDLER ROGERS
ESTATE AGENTS

2 Seaview, Wisemans Bridge

Situated in a stunning location, this property offers a rare opportunity to purchase a wonderful family home which is literally within yards of the beach at Wiseman's Bridge. It has lovely sea views which can be enjoyed from the house, patio and garden due to its elevated position. The well appointed accommodation, which benefits from oil central heating, comprises Entrance Hall, Kitchen, Utility Room, Shower Room, Lounge/Dining Room, Conservatory and an En-Suite Double Bedroom on the Ground Floor. The First Floor has Three Double Bedrooms and a Family Bathroom. The property is approached over a shared driveway which leads to off road parking for one car. Externally the patio and gardens gently slope towards the beach and offer a perfect blend of rural and coastal views.





KITCHEN

10' 06" x 8' 01" (3.2m x 2.46m)
Window to side. Fitted with a range of wall and base units with matching solid wood worktop. Integral 4 ring induction hob with extractor over. Integral fridge, dishwasher and eye level electric oven. Ceramic 1.5 sink and drainer with mixer tap over. Part tiled walls. Tiled Floors. Door to Utility Room.

UTILITY ROOM

5' 09" x 8' 01" (1.75m x 2.46m)
Window to front. uPVC glazed stable door to side. Stainless steel sink with mixer tap over Space and connection for washing machine and freezer. New Worcester oil boiler installed in 2021. Door to Shower Room. Part tiled walls. Tiled Floor.

LOUNGE/DINING ROOM

24' 10" x 17' 03" (7.57m x 5.26m)
L-shape room with full height picture window and a glazed door to rear, enjoying amazing sea views. A further glazed door leads to the Conservatory. Open fireplace with stone surround and slate hearth. Ample space for lounge suite and family sized dining set. Laminate Flooring. Doors to Bedroom 1 and stairs to the First Floor.





CONSERVATORY

7' 10" x 14' 02" (2.39m x 4.32m)

Glazed all sides with French doors to leading to the rear. Amazing views over the garden and out to sea. Glazed sliding doors to Bedroom 1. Tiled Floor.

Polycarbonate roof and uPVC frame.

BEDROOM 1

14' 07" x 11' 04" (4.44m x 3.45m)

Window to side. Sliding glazed doors to Conservatory with stunning sea views. Door to En Suite Bathroom. Doors to built in wardrobes with integral storage.

BEDROOM 2

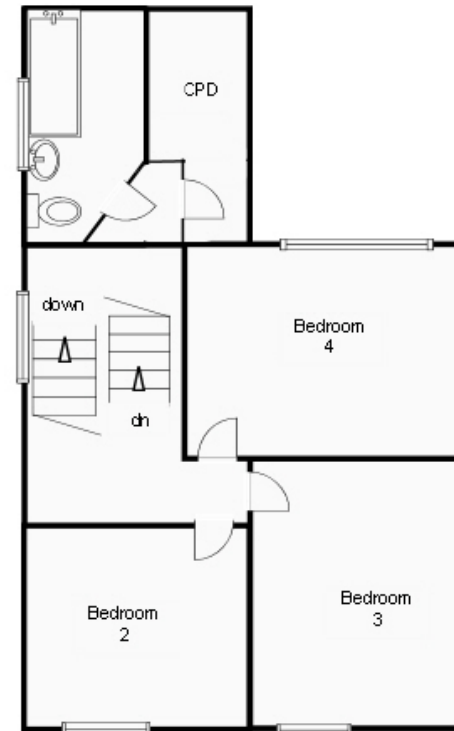
10' 09" x 8' 09" (3.28m x 2.67m)

Good sized Double Bedroom with window to rear enjoying amazing sea views.





Ground Floor
For illustrative purposes only, not to scale.



First Floor
For illustrative purposes only, not to scale.