



**CLIVEPEARCE**  
Now you're moving

2 Bedrooms

Bungalow

Asking Price

£300,000

Located in

Redruth



[www.clivepearceproperty.com](http://www.clivepearceproperty.com)



# Beauchamp Meadow

Redruth | | TR15 2DG



A very well presented two double bedroom bungalow with conservatory, enclosed rear garden, garage and driveway parking. Mains gas central heating and double glazing. NO ONWARD CHAIN

# Beauchamp Meadow

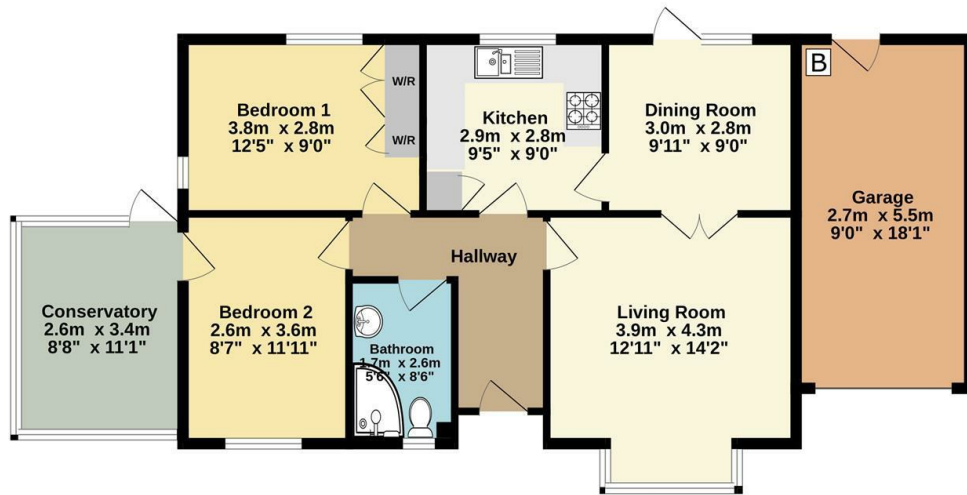
£300,000 Freehold



- Two bedroom bungalow
- No onward chain
- UPVC double glazing
- Block paved driveway parking
- Convenient location near Lanner and Redruth
- Link detached
- Mains gas central heating
- Enclosed rear garden
- Garage with electric roller shutter door



Ground Floor  
86.3 sq.m. (929 sq.ft.) approx.



TOTAL FLOOR AREA: 86.3 sq.m. (929 sq.ft.) approx.  
Whilst every attempt has been made to ensure the accuracy of the floorplan contained here, measurements of doors, windows, rooms and any other items are approximate and no responsibility is taken for any error, omission or mis-statement. This plan is for illustrative purposes only and should be used as such by any prospective purchaser. The services, systems and appliances shown have not been tested and no guarantee as to their operability or efficiency can be given.  
Made with Metropix ©2025



## Council Tax Band C

## Local Authority

Agents Note: Whilst every care has been taken to prepare these particulars, they are for guidance purposes only. All measurements are approximate and are for general guidance purposes only and whilst every care has been taken to ensure their accuracy, they should not be relied upon and potential buyers/tenants are advised to recheck the measurements.

Energy Efficiency Rating		
	Current	Potential
Very energy efficient - lower running costs		
(92 plus) <b>A</b>		
(81-91) <b>B</b>		84
(69-80) <b>C</b>	72	
(55-68) <b>D</b>		
(39-54) <b>E</b>		
(21-38) <b>F</b>		
(1-20) <b>G</b>		
Not energy efficient - higher running costs		
England & Wales		EU Directive 2002/91/EC

31 Lemon Street  
Truro  
Cornwall  
TR1 2LS



**CLIVEPEARCE**  
Now you're moving

hello@clivepearceproperty.com

01872 272622

www.clivepearceproperty.com