



**CLIVEPEARCE**  
Now you're moving

Four Bedrooms  
House - Detached  
Located in FEOCK  
**£995,000**



[hello@clivepearceproperty.com](mailto:hello@clivepearceproperty.com)

[www.clivepearceproperty.com](http://www.clivepearceproperty.com)

01872 272622



# Harcourt Feock

Truro | Cornwall | TR3 6SQ



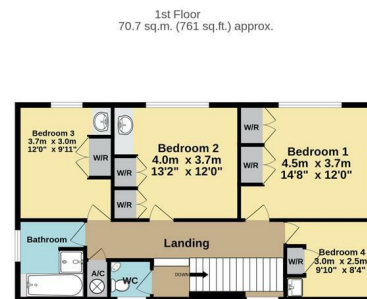
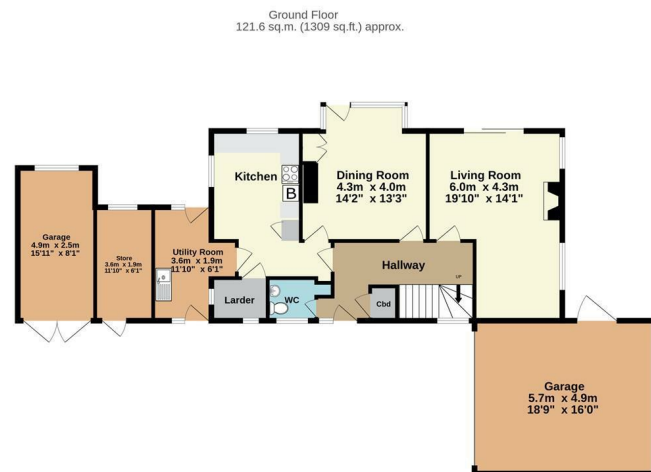
Enveloped in mature south facing gardens, Sunnymead is a substantial detached four bedroom family house located mere steps away from Restronguet Point in tranquil Harcourt, and comes to the market for the first time since 1944. The extensive grounds are brimming with mature plants and trees and the house offers fantastic potential, whether for a simple update and renovation project or a comprehensive redevelopment (subject of course to any necessary consents). Plentiful driveway parking, double and single garages. NO ONWARD CHAIN.

# Harcourt

£995,000 Freehold

- Four bedroom family house
- Creek glimpses
- Superb future potential
- Tucked away location
- NO ONWARD CHAIN
- Prime Feock location
- Extensive mature garden plot
- Two garages and driveway parking
- Within walking distance of Loe Beach





TOTAL FLOOR AREA : 192.3 sq.m. (2070 sq.ft.) approx.

Whilst every attempt has been made to ensure the accuracy of the floorplan contained here, measurements of doors, windows, rooms and any other items are approximate and no responsibility is taken for any error, omission or mis-statement. This plan is for illustrative purposes only and should be used as such by any prospective purchaser. The services, systems and appliances shown have not been tested and no guarantee as to their operability or efficiency can be given.

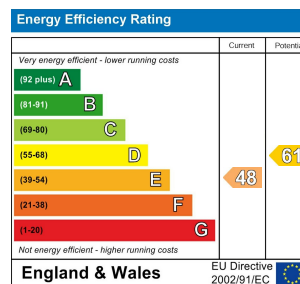
Made with Metropix ©2025.



**Council Tax Band: G**

**Local Authority: Cornwall Council**

Agents Note: Whilst every care has been taken to prepare these particulars, they are for guidance purposes only. All measurements are approximate and are for general guidance purposes only and whilst every care has been taken to ensure their accuracy, they should not be relied upon and potential buyers/tenants are advised to recheck the measurements.



**CLIVEPEARCE**  
Now you're moving

31 Lemon Street  
Truro  
Cornwall  
TR1 2LS

01872 272622

hello@clivepearceproperty.com

www.clivepearceproperty.com