



CLIVEPEARCE
Now you're moving

3 Bedrooms

House - End Terrace

Asking Price

£260,000

Located in

Truro



www.clivepearceproperty.com



Jubilee Road

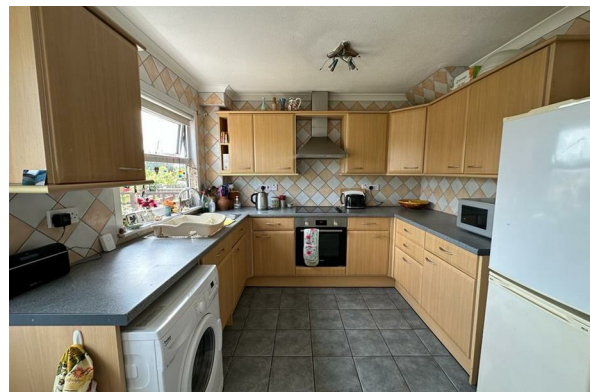
Truro | Cornwall | TR3 6BS



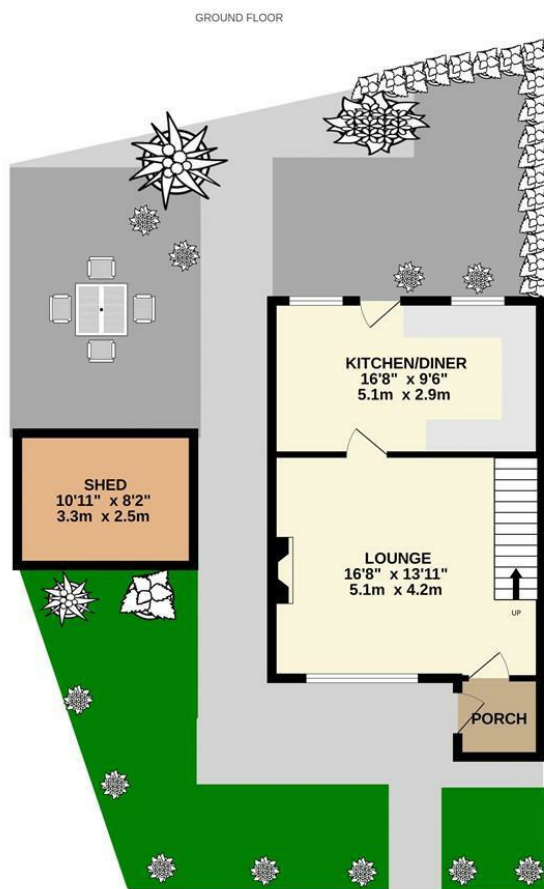
A three bedroom end of terrace family home in the sought after village of Threemilestone. Gas central heating. Modern white shower room suite. Open plan kitchen/diner. Delightful enclosed rear garden with timber shed.

Jubilee Road

£260,000 Freehold



- Three bedroom home
- Open plan kitchen/dining room
- Shower room with white suite
- Storage shed
- Excellent location close to college and hospital
- Spacious living room
- Kitchen with integrated oven, hob & extractor
- Lovely enclosed low maintenance garden
- Gas central heating and double glazing



10 JUBILEE ROAD, THREEMILESTONE, TR3 6BS

Whilst every attempt has been made to ensure the accuracy of the floorplan contained here, measurements of doors, windows, rooms and any other items are approximate and no responsibility is taken for any error, omission or mis-statement. This plan is for illustrative purposes only and should be used as such by any prospective purchaser. The services, systems and appliances shown have not been tested and no guarantee as to their operability or efficiency can be given.
Made with Metropix ©2023

Council Tax Band B

Local Authority

Agents Note: Whilst every care has been taken to prepare these particulars, they are for guidance purposes only. All measurements are approximate and are for general guidance purposes only and whilst every care has been taken to ensure their accuracy, they should not be relied upon and potential buyers/tenants are advised to recheck the measurements.

Energy Efficiency Rating		
	Current	Potential
Very energy efficient - lower running costs		
(92 plus) A		
(81-91) B		
(69-80) C		
(55-68) D		
(39-54) E		
(21-38) F		
(1-20) G		
Not energy efficient - higher running costs		
England & Wales	EU Directive 2002/91/EC	

31 Lemon Street
Truro
Cornwall
TR1 2LS



CLIVEPEARCE
Now you're moving

hello@clivepearceproperty.com

01872 272622

www.clivepearceproperty.com