



CLIVEPEARCE
Now you're moving

3 Bedrooms

House - Terraced

Asking Price

£320,000

Located in

Truro





Alston Cottage Mount Pleasant

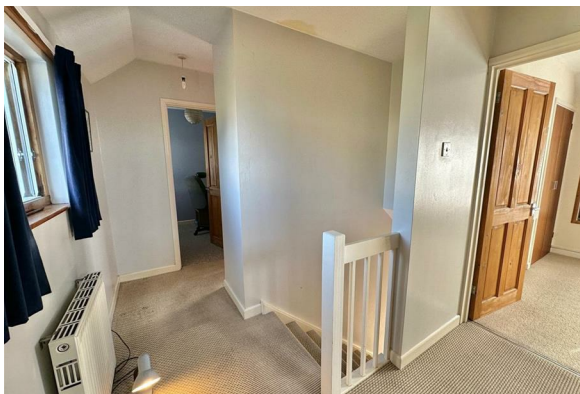
Truro | Cornwall | TR3 6BB



In a non estate position on the edge of the village, this delightful three bedroom home is available without any onward chain. Open plan kitchen/diner, living room, utility, bathroom, garden and garage.

Alston Cottage Mount Pleasant

£320,000 Freehold



- Lovely edge of village location
- Living room
- Kitchen with integrated appliances
- Modern bathroom and WC
- Garage
- Three bedrooms
- Open plan kitchen/dining room
- Utility lobby
- Enclosed rear garden
- ****NO CHAIN****



Total area: approx. 80.9 sq. metres (870.7 sq. feet)

Created by JC-EPC
All floor plan dimensions are approximate and provided for illustrative purposes only. While every effort is made to ensure accuracy, measurements may vary, and no guarantee is given regarding their precision. Prospective buyers or tenants should verify all dimensions independently before making any decisions.
Plan produced using PlanUp.

Council Tax Band C

Local Authority

Agents Note: Whilst every care has been taken to prepare these particulars, they are for guidance purposes only. All measurements are approximate and are for general guidance purposes only and whilst every care has been taken to ensure their accuracy, they should not be relied upon and potential buyers/tenants are advised to recheck the measurements.

Energy Efficiency Rating		
	Current	Potential
Very energy efficient - lower running costs		
(92 plus) A		
(81-91) B		
(69-80) C		
(55-68) D		
(39-54) E		
(21-38) F		
(1-20) G		
Not energy efficient - higher running costs		
England & Wales	EU Directive 2002/91/EC	

31 Lemon Street
Truro
Cornwall
TR3 7QB



CLIVEPEARCE
Now you're moving

Miranda@clivepearceproperty.com

01872 272622