



CLIVEPEARCE
Now you're moving

3 Bedrooms

House - Link Detached

Asking Price

£599,950

Located in

Truro



www.clivepearceproperty.com



Jubilee Terrace

Truro | Cornwall | TR4 9JY



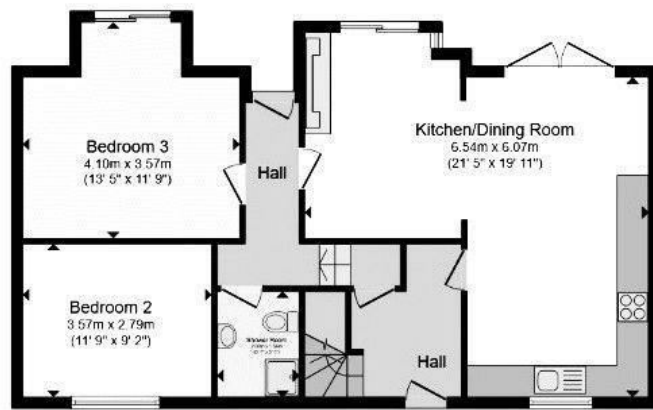
An exceptional three double bedroom (potentially four) contemporary style family house with fantastic far reaching views. Air source under floor heating, large enclosed landscaped garden, garage/ workshop/ store and ample driveway parking, located in a charming village close to the golden sands of Penhale and Perranporth on the north Cornish coast.

Jubilee Terrace

£599,950 Freehold



- Three / potentially four bedrooms
- Comprehensively remodeled
- Sunny landscaped garden
- Generous driveway parking
- Excellent village location
- Far reaching views
- Air source under floor heating
- Garage / workshop / store & utility room
- Contemporary style accommodation
- Near to north coast beaches



Ground Floor



First Floor

Total floor area 146.8 m² (1,580 sq.ft.) approx

Council Tax Band

Local Authority

Agents Note: Whilst every care has been taken to prepare these particulars, they are for guidance purposes only. All measurements are approximate and are for general guidance purposes only and whilst every care has been taken to ensure their accuracy, they should not be relied upon and potential buyers/tenants are advised to recheck the measurements.

Energy Efficiency Rating		
	Current	Potential
Very energy efficient - lower running costs		
(92 plus) A		
(81-91) B		
(69-80) C		
(55-68) D		
(39-54) E		
(21-38) F		
(1-20) G		
Not energy efficient - higher running costs		
England & Wales	EU Directive 2002/91/EC	

31 Lemon Street
Truro
Cornwall
TR3 7QB



CLIVEPEARCE
Now you're moving

hello@clivepearceproperty.com

01872 272622

www.clivepearceproperty.com