



CLIVEPEARCE
Now you're moving

3 Bedrooms

House - End Terrace

Asking Price

£315,000

Located in

Penryn



www.clivepearceproperty.com



Kingston Way

Penryn | Cornwall | TR10 9FD



A spacious three bedroom end of terrace house with enclosed sunny garden and off street parking for two vehicles and EV charging point. Excellent location for Falmouth University.

Kingston Way

£315,000 Freehold

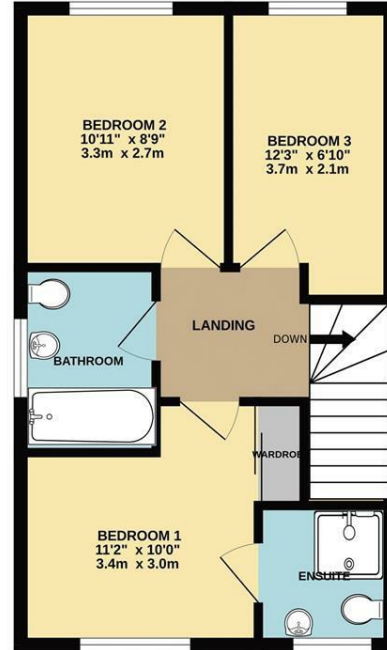


- Three bedroom house
- Delightful rural view
- Ground floor cloakroom / WC
- Mains gas central heating
- Boarded useful loft storage
- Bedroom one with en-suite shower room
- Enclosed sunny garden
- UPVC double glazing
- Ideal location for Falmouth University

GROUND FLOOR
417 sq.ft. (38.8 sq.m.) approx.



1ST FLOOR
417 sq.ft. (38.8 sq.m.) approx.



TOTAL FLOOR AREA: 834 sq.ft. (77.5 sq.m.) approx.
Whilst every attempt has been made to ensure the accuracy of the floorplan contained here, measurements of doors, windows, rooms and any other items are approximate and no responsibility is taken for any error, omission or mis-statement. This plan is for illustrative purposes only and should be used as such by any prospective purchaser. The services, systems and appliances shown have not been tested and no guarantee as to their operability or efficiency can be given.
Made with Metropix ©2025

Council Tax Band C

Local Authority

Agents Note: Whilst every care has been taken to prepare these particulars, they are for guidance purposes only. All measurements are approximate and are for general guidance purposes only and whilst every care has been taken to ensure their accuracy, they should not be relied upon and potential buyers/tenants are advised to recheck the measurements.

Energy Efficiency Rating		
	Current	Potential
Very energy efficient - lower running costs		
(92 plus) A		
(81-91) B		
(69-80) C		
(55-68) D		
(39-54) E		
(21-38) F		
(1-20) G		
Not energy efficient - higher running costs		
England & Wales	EU Directive 2002/91/EC	

31 Lemon Street
Truro
Cornwall
TR1 2LS



CLIVEPEARCE
Now you're moving

hello@clivepearceproperty.com

01872 272622

www.clivepearceproperty.com