



**CLIVEPEARCE**  
Now you're moving

2 Bedrooms

House - Terraced

Asking Price

£145,000

Located in

Truro





# 14 Robartes Court Redannick

Truro | Cornwall | TR1 2XX



A purpose built two bedroom terraced house designed specifically for the over 55s. Residents' lounge, communal laundry, guest suite, house manager, parking, pull cord system. Great city location, ideal retirement property.



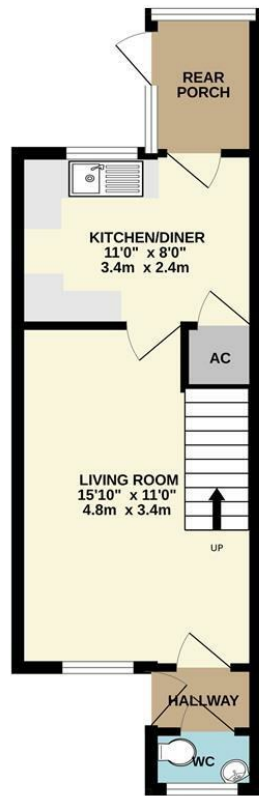
# 14 Robartes Court Redannick

£145,000 Leasehold

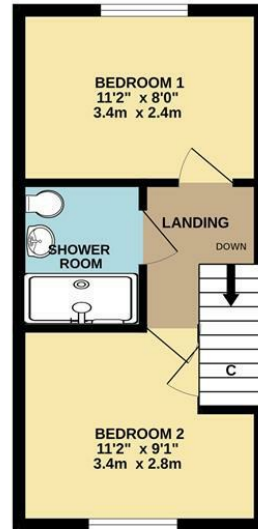


- Two bedroom retirement house
- Great city location
- Emergency pull cord system
- Bookable guest suite
- Communal garden
- Over 55s
- House manager for the complex
- Residents laundry
- Residents lounge
- Communal parking

GROUND FLOOR  
320 sq.ft. (29.8 sq.m.) approx.



1ST FLOOR  
266 sq.ft. (24.7 sq.m.) approx.



TOTAL FLOOR AREA: 587 sq.ft. (54.5 sq.m.) approx.

Whilst every attempt has been made to ensure the accuracy of the floorplan contained here, measurements of doors, windows, rooms and any other items are approximate and no responsibility is taken for any errors, omission or mis-statement. This plan is for illustrative purposes only and should be used as such by any prospective purchaser. The services, systems and appliances shown have not been tested and no guarantee as to their operability or efficiency can be given.  
Made with Metropix ©2025

## Council Tax Band C

## Local Authority

Agents Note: Whilst every care has been taken to prepare these particulars, they are for guidance purposes only. All measurements are approximate and are for general guidance purposes only and whilst every care has been taken to ensure their accuracy, they should not be relied upon and potential buyers/tenants are advised to recheck the measurements.

Energy Efficiency Rating		
	Current	Potential
Very energy efficient - lower running costs		
(92 plus) <b>A</b>		
(81-91) <b>B</b>		82
(69-80) <b>C</b>		
(55-68) <b>D</b>	62	
(39-54) <b>E</b>		
(21-38) <b>F</b>		
(1-20) <b>G</b>		
Not energy efficient - higher running costs		
England & Wales	EU Directive 2002/91/EC	

31 Lemon Street  
Truro  
Cornwall  
TR3 7QB



**CLIVEPEARCE**  
Now you're moving

Miranda@clivepearceproperty.com

01872 272622