



CLIVEPEARCE
Now you're moving

1 Bedrooms

Bungalow - Terrace

Asking Price

£190,000

Located in

Truro



www.clivepearceproperty.com



18 Gover Close

Truro | Cornwall | TR4 8DB



A beautifully presented one double bedroom terraced home with sunny front and rear gardens and allocated parking space located a short walk from the village centre and approximately two miles from Porthtowan surfing beach on the north Cornish coast. Underfloor heating and UPVC double glazing.

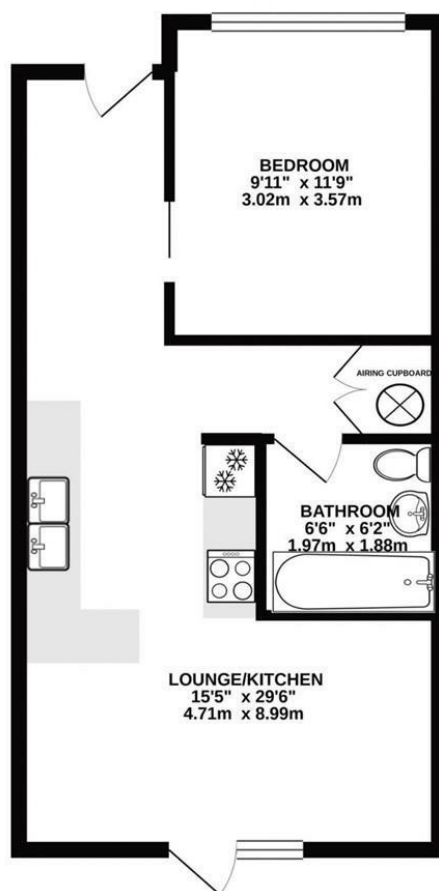
18 Gover Close

£190,000 Freehold



- Beautifully presented home
- Sunny gardens
- Underfloor heating
- Ideal location for travel to the beach and the city
- Stylish open plan living
- One double bedroom
- Allocated parking space
- Popular village location
- UPVC double glazing

GROUND FLOOR
459 sq.ft. (42.7 sq.m.) approx.



Council Tax Band A

Local Authority

Agents Note: Whilst every care has been taken to prepare these particulars, they are for guidance purposes only. All measurements are approximate and are for general guidance purposes only and whilst every care has been taken to ensure their accuracy, they should not be relied upon and potential buyers/tenants are advised to recheck the measurements.

Energy Efficiency Rating		
	Current	Potential
Very energy efficient - lower running costs		
(92 plus) A		
(81-91) B		
(69-80) C		
(55-68) D		
(39-54) E		
(21-38) F		
(1-20) G		
Not energy efficient - higher running costs		
England & Wales	EU Directive 2002/91/EC	

31 Lemon Street
Truro
Cornwall
TR3 7QB



CLIVEPEARCE
Now you're moving

hello@clivepearceproperty.com

01872 272622

www.clivepearceproperty.com