



CLIVEPEARCE
Now you're moving

4 Bedrooms

House - Detached

Asking Price

£875,000

Located in

Truro





Peacehaven

Truro | Cornwall | TR3 6RG



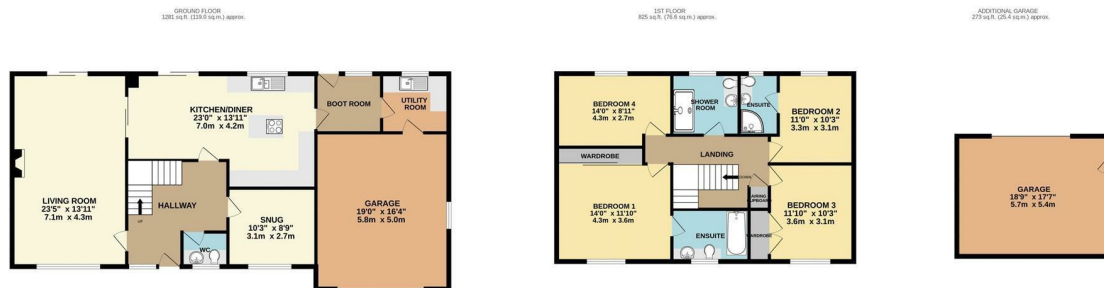
In excess of 2300 sq.ft. a spacious FOUR BEDROOM (two en-suite) detached home in the waterside village of Feock. Set within a mature and private plot with driveway parking, integral garage and a second detached garage and a workshop.

Peacehaven

£875,000 Freehold



- Four double bedrooms
- Family shower room
- Living room with log burner and doors to garden
- Utility room and boot room
- Gorgeous mature landscaped level gardens
- Two en-suite bath/shower rooms
- Superb contemporary kitchen with central island
- Dining room with doors to garden
- Private driveway and two garages
- Timber workshop



TOTAL FLOOR AREA: 2380 sq.ft. (221.1 sq.m.) approx.

Whilst every attempt has been made to ensure the accuracy of the floorplan contained here, measurements of doors, windows, rooms and any other items are approximate and no responsibility is taken for any error, omission or mis-statement. This plan is for illustrative purposes only and should be used as such by any prospective purchaser. The services, systems and appliances shown have not been tested and no guarantee as to their operability or efficiency can be given.

Made with Metropix ©2025

Council Tax Band F

Local Authority

Agents Note: Whilst every care has been taken to prepare these particulars, they are for guidance purposes only. All measurements are approximate and are for general guidance purposes only and whilst every care has been taken to ensure their accuracy, they should not be relied upon and potential buyers/tenants are advised to recheck the measurements.

Energy Efficiency Rating		
	Current	Potential
Very energy efficient - lower running costs		
(92 plus) A		
(81-91) B		
(69-80) C		
(55-68) D		
(39-54) E		
(21-38) F		
(1-20) G		
Not energy efficient - higher running costs		
England & Wales	EU Directive 2002/91/EC	

31 Lemon Street
Truro
Cornwall
TR3 7QB



CLIVEPEARCE
Now you're moving

Miranda@clivepearceproperty.com

01872 272622