

6 Salop House Salop Street

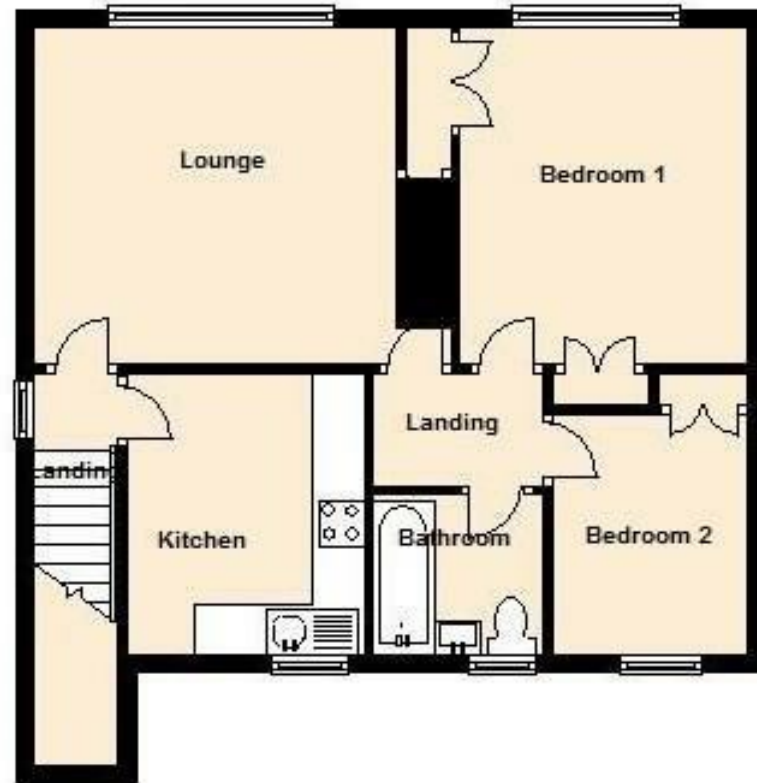
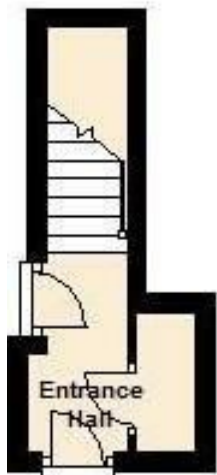


4 Andrews Buildings  
Stanwell Road  
Penarth CF64 2AA

**All enquiries:** 029 2070 7999  
**Sales and general enquiries:** info@shepherdsharp.com  
**Lettings enquiries:** lettings@shepherdsharp.com

**Monday – Friday**  
9am – 5.30pm  
**Saturday**  
9am – 5pm

**SHEPHERD SHARPE**



## 6 Salop House Salop Street

Penarth CF64 1HJ

£179,950

Situated in the heart of the town centre is this much improved and superbly presented first floor two bedroom apartment. The property has its own private entrance hallway and access to communal garden. Comprises hallway, landing, lounge/dining room, quality fitted kitchen, two bedrooms and well presented bathroom. Decorated in a neutral style throughout, gas central heating (combination boiler installed 2014), uPVC double glazing. Leasehold.

Energy Efficiency Rating		Current	Potential
Very energy efficient – lower running costs			
(92 plus) A			
(81-91) B			
(69-80) C			
(55-68) D		67	75
(39-54) E			
(21-38) F			
(1-20) G			
Not energy efficient – higher running costs			
England & Wales		EU Directive 2002/91/EC	



Modern uPVC double glazed panelled front door to hallway.

#### Hallway

Electric radiator, carpeted staircase leading up to first floor, area for cloaks, useful deep store cupboard, access to rear garden.

#### Landing

uPVC double glazed door on landing, uPVC double glazed window providing natural light. Radiator, (the first floor is solid concrete creating additional privacy between the two floors).

#### Lounge/Dining Room

13'1" x 11'11" (4.00m x 3.64m)

Large uPVC double glazed window to front. Attractive room with space for small dining table and chairs plus informal entertaining area. Carpet, neutral decoration, large radiator. Door to inner lobby.



#### Inner Lobby

Useful storage cupboard, access to electric meter.

#### Kitchen

10'2" x 8'6" (3.10m x 2.60m)

An attractive classic cream coloured shaker style kitchen with butchers block effect worktops, sink with half bowl and drainer, lever mixer tap. Space and plumbing for dishwasher and washing machine, space for electric cooker and fridge freezer. Wall mounted Baxi boiler (installed in 2014), attractive tile splashback, co-ordinating vinyl floor, radiator. uPVC double glazed window.

#### Bedroom 1

10'4" x 11'11" (3.15m x 3.64m)

A spacious bright and light room. uPVC double glazed windows to front. Carpet, radiator, neutral decoration, two large built-in wardrobes, access to gas meter.



#### Bedroom 2

8'5" x 7'1" (2.59m x 2.18m)

A second double bedroom. uPVC double glazed window to rear. Carpet, neutral decoration, built in wardrobe, radiator.

#### Bathroom

5'10" x 5'5" (1.80m x 1.66m)

Attractively presented. Comprising panelled bath with shower attachment off mixer shower plus additional wall shower, waterproof tile effect splashback, wash hand basin with mixer tap, built-in storage beneath and wc, both in white. Vinyl flooring, extractor fan, radiator, mirror cabinet. uPVC double glazed window.



#### Outside

Large communal south facing rear garden which is available for all six apartment owners. Traditional drying areas, seating area immediately outside apartment 6 with table and chairs.

#### Lease Details

Lease 125 years from 1997.

Ground Rent £10 p.a.

Maintenance TBC

#### Council Tax

Band C £1,780.48 p.a. (24/25)

#### Post Code

CF64 1HJ

