



**HUNTERS**<sup>®</sup>  
HERE TO GET *you* THERE

2   |  |  C

# Parkside, Highfield Lane, Southampton, Hampshire

Per Calendar Month £1,325 Per Calendar Month



Situated on the ground floor, a fantastic and modern two bedroom south facing apartment located in Highfield. The property comprises entrance hall, bathroom, kitchen fully stocked with white goods, large living and dining space with access to patio area and two double bedrooms with fitted wardrobes to the master. Offered furnished and available early November, the property is ideally suited to professionals.

38 Bedford Place, Southampton, Hampshire, SO15 2DG | 02380 987 720  
[southampton@hunters.com](mailto:southampton@hunters.com) | [www.hunters.com](http://www.hunters.com)



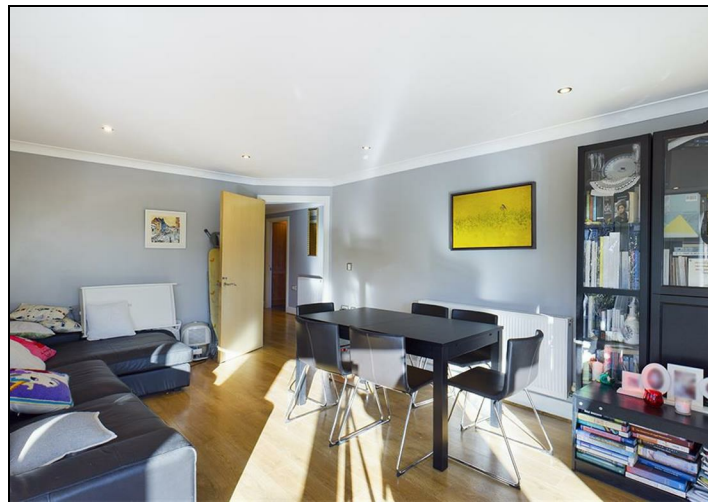
This Hunters business is independently owned and operated by Clegg Properties Ltd | Registered Address 27 Westfield Road, Lymington, Hampshire, England, SO41 3PZ | Registered Number: 06421594 England and Wales | VAT No: 188 0548 76 with the written consent of Hunters Franchising Limited.





## KEY FEATURES

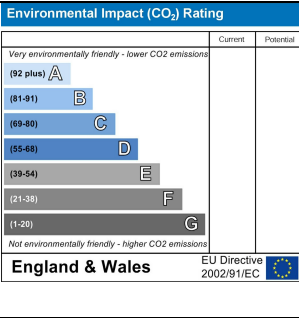
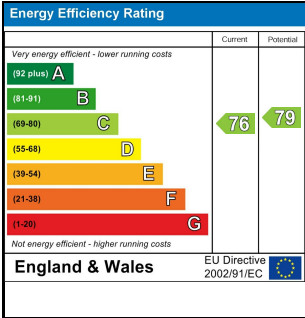
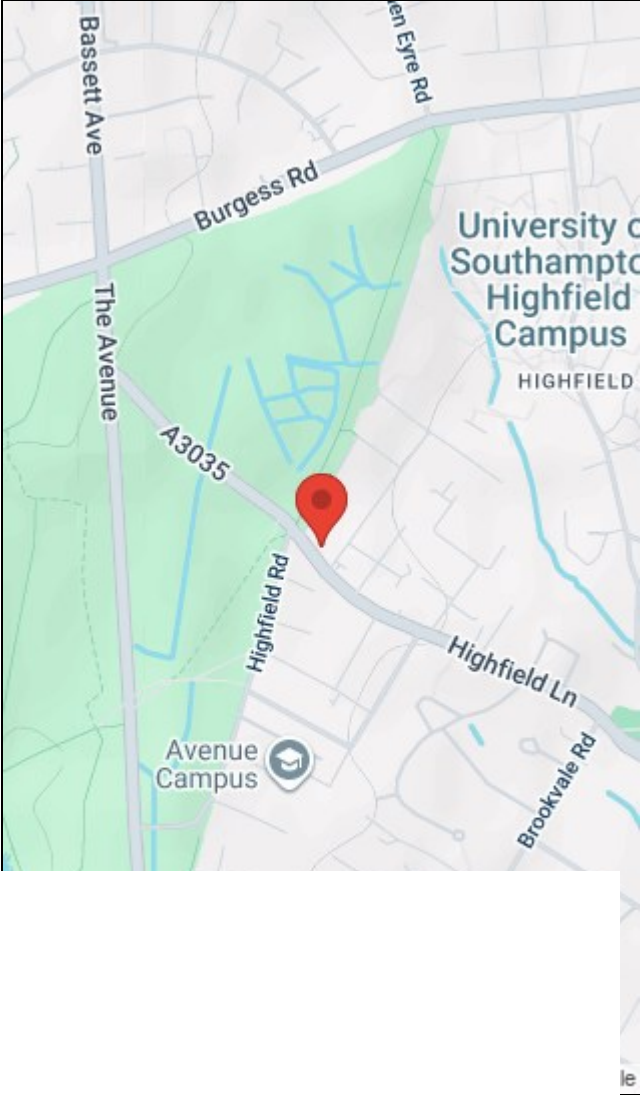
- FURNISHED
- ALLOCATED PARKING
- VISITOR PARKING
- COMMUNAL GARDENS
- LOCAL AMENITIES NEARBY
- CLOSE TO PORTSWOOD
- NEAR TO SOUTHAMPTON UNIVERSITY
- AVAILABLE EARLY NOVEMBER
- COUNCIL TAX BAND C











38 Bedford Place, Southampton, Hampshire, SO15 2DG | 02380 987 720  
[southampton@hunters.com](mailto:southampton@hunters.com) | [www.hunters.com](http://www.hunters.com)



This Hunters business is independently owned and operated by Clegg Properties Ltd | Registered Address 27 Westfield Road, Lymington, Hampshire, England, SO41 3PZ | Registered Number: 06421594 England and Wales | VAT No: 188 0548 76 with the written consent of Hunters Franchising Limited.