



HUNTERS[®]
HERE TO GET *you* THERE

4 2 2

HUNTERS

Elsanta Crescent, Fareham

Offers In Excess Of £425,000



This is a modern & spacious end-of-terrace townhouse enjoying accommodation of 1,630 sqft approx. and is privately located at the end of a crescent of homes which overlook open field space with woodland surrounding.

Set in the popular area of Titchfield Common, this elegant Georgian-style townhouse combines modern build quality of 2013 with timeless character. Ideally positioned just over a mile from the historic village of Titchfield and two miles from Locks Heath Centre, it offers both convenience and charm, making it a perfect choice for family living.

Step inside this stunning home, where the ground floor offers an impressive open-plan kitchen and dining area with sleek wooden accents and elegant rose-gold finishes. A central island creates a natural focal point, while French doors open onto a sun-soaked, northwest-facing garden that enjoys the evening light. The owners, who purchased the property new, have thoughtfully extended the space to include a larger kitchen, an exceptionally large (11'4" X 5'4") utility room, and a convenient downstairs W/C.

Upstairs, the main lounge provides a generous family space with views of the fantastic woodland giving a feeling of seclusion and privacy and is completed with a bio fire feature, the private balcony overlooks the small & lovely children's play area. Across the substantial hall landing, the first bedroom extends over 18m², offering an abundance of space. The top floor is home to three additional bedrooms, including one with its own en- suite, along with a modern family bathroom. Additional benefits include integral garage, double glazing and front and rear parking.

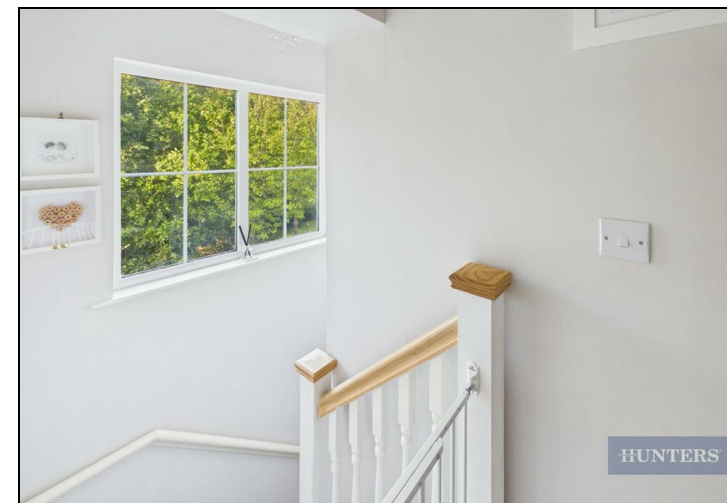
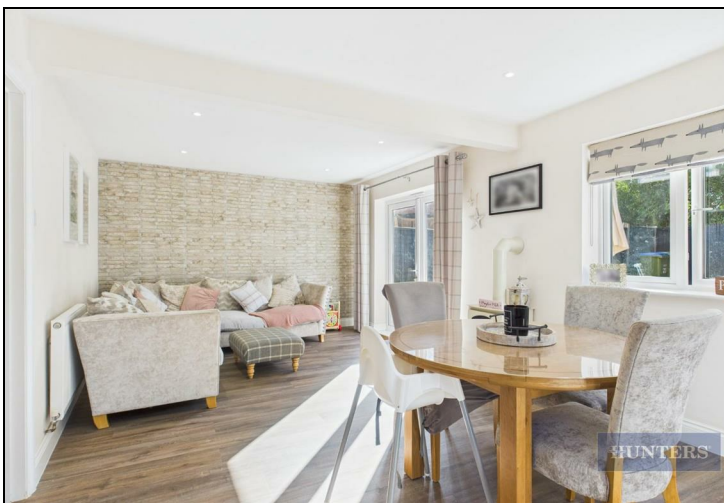
Viewing at the earliest is highly recommended to also appreciate all that this splendid family home offers.

There is a communal estate charge of £145 pa.

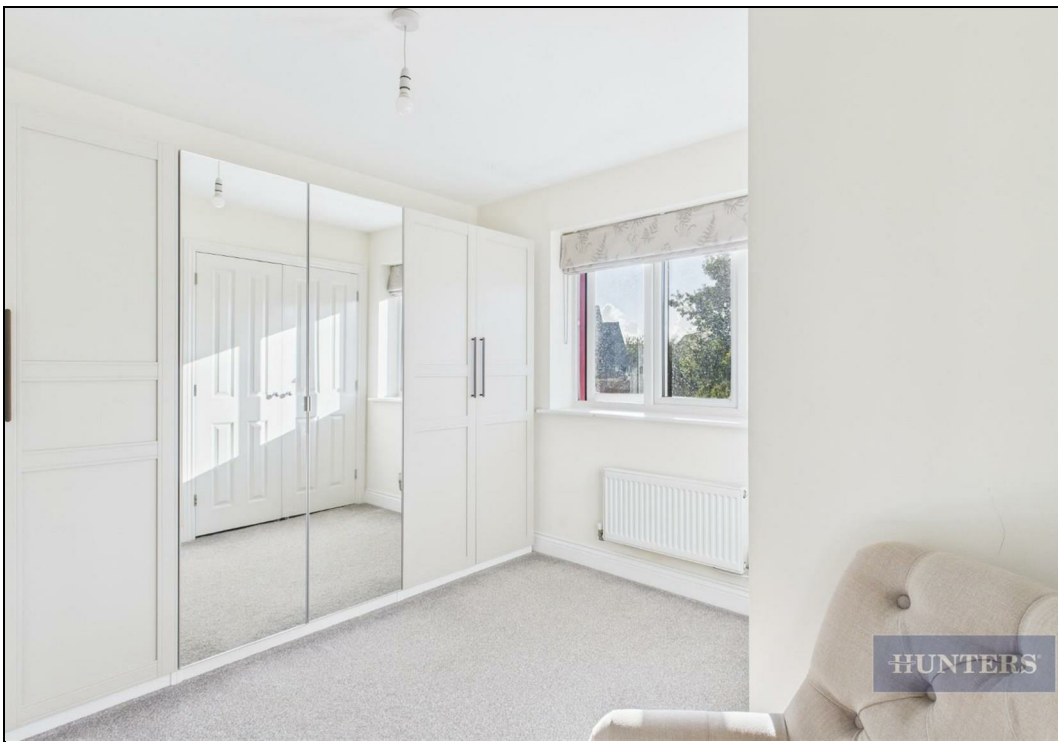
Tenure: Freehold

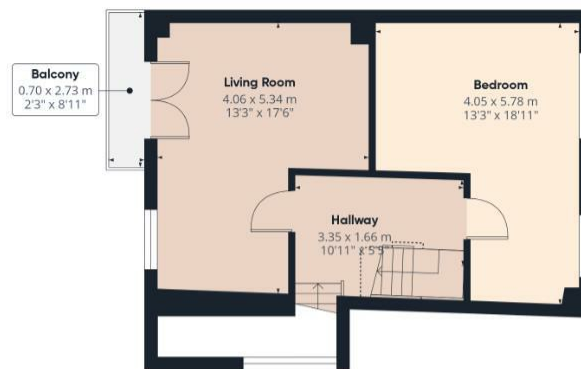
KEY FEATURES

- An Impressive & Superbly Presented End Terrace Townhouse
- Modern Extended Open Plan Kitchen Diner
 - Northwest-Facing Garden
 - Spacious Lounge
- Utility Room and Downstairs Cloakroom
 - En-suite to Principal Bedroom
 - Generous 18m² Bedroom
 - Modern Family bathroom
 - Garage + 2 Parking Spaces
- Magnificent Woodland Surrounding







**HUNTERS**®

Approximate total area⁽¹⁾

151,4 m²1630 ft²

Balconies and terraces

1.9 m²20 ft²

Reduced headroom

1,1 m²12 ft²

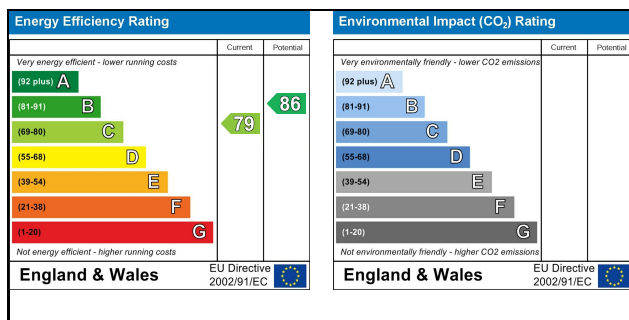
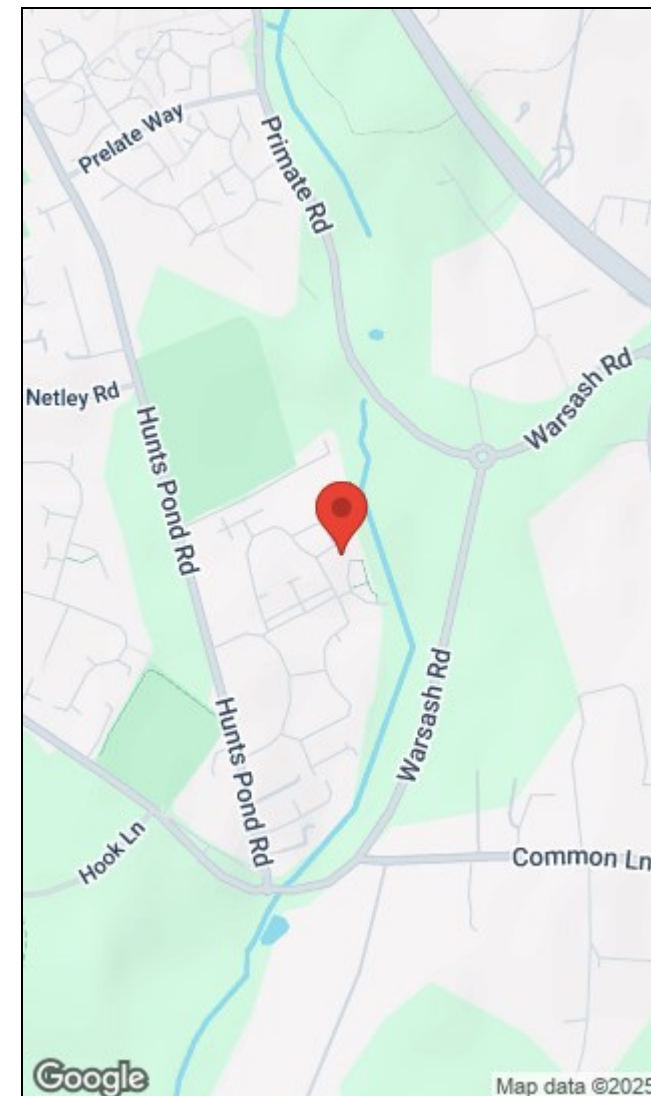
(1) Excluding balconies and terraces

Reduced headroom

Below 1.5 m/5 ft

Calculations reference the RICS IPMS 3C standard. Measurements are approximate and not to scale. This floor plan is intended for illustration only.

GIRAFFE360



38 Bedford Place, Southampton, Hampshire, SO15 2DG | 02380 987 720

southampton@hunters.com | www.hunters.com

