



**HUNTERS**<sup>®</sup>  
HERE TO GET *you* THERE



# Craven Hill Gardens, London

£2,750 Per Calendar Month



**Long Let & Furnished:** A bright and large (around 715 Sq.Ft) modern one bedroom flat with balcony to rent in Bayswater W2, located on a well-kept purpose built block within close proximity to the open spaces of Hyde Park.

Available to rent from 24th October 2025 this apartment offers a truly well-proportioned room sizes with a generous reception room, fully equipped modern white kitchen, double bedroom with built-in wardrobes, bathroom and a balcony with views over the pretty garden square. The building also benefits from a lift and a caretaker.

The rent includes Heating and Hot Water charges

Cr  
an  
Cl  
re  
nc

leys  
s and  
of the  
e for

38 Bedford Place, Southampton, Hampshire, SO15 2DG | 02380 987 720  
[southampton@hunters.com](mailto:southampton@hunters.com) | [www.hunters.com](http://www.hunters.com)

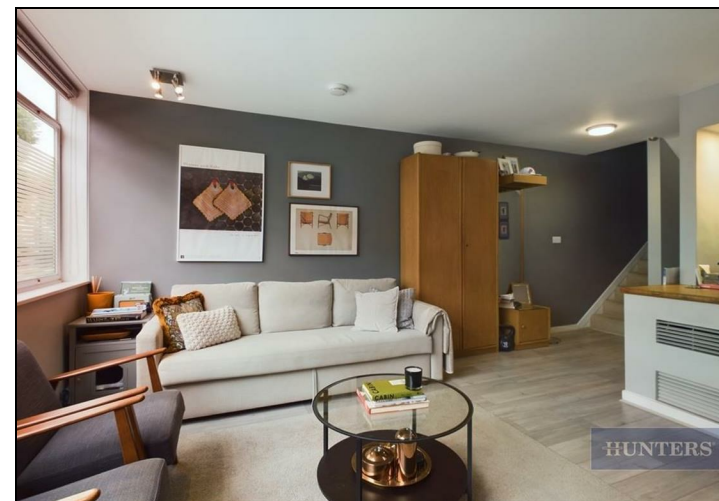
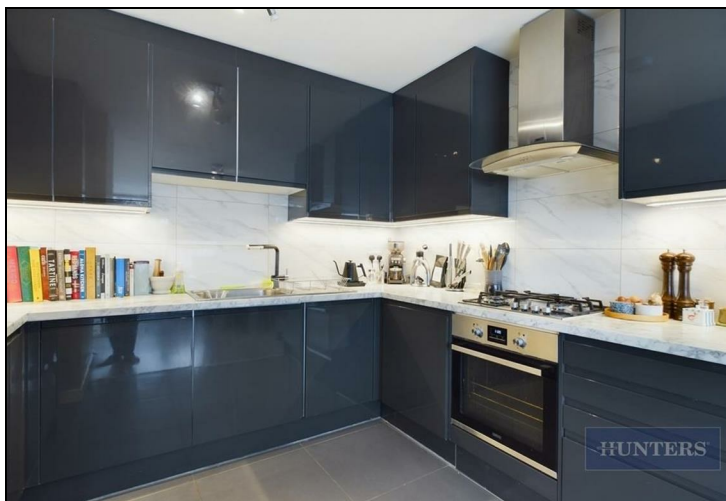


This Hunters business is independently owned and operated by Clegg Properties Ltd | Registered Address 27 Westfield Road, Lymington, Hampshire, England, SO41 3PZ | Registered Number: 06421594 England and Wales | VAT No: 188 0548 76 with the written consent of Hunters Franchising Limited.

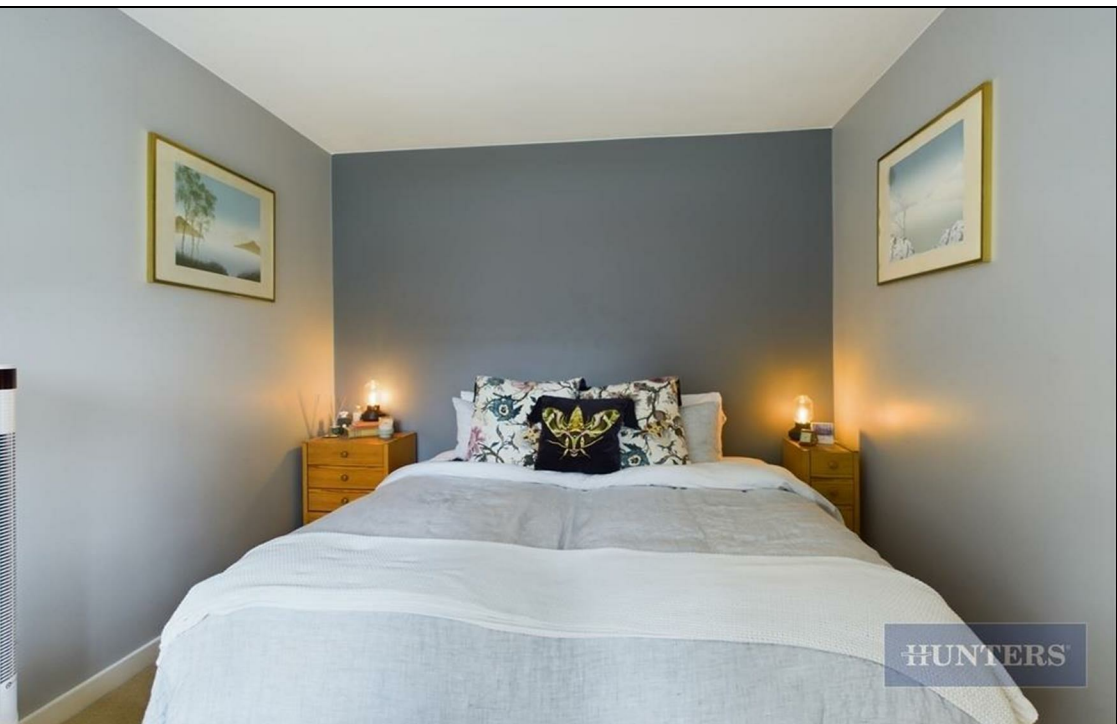
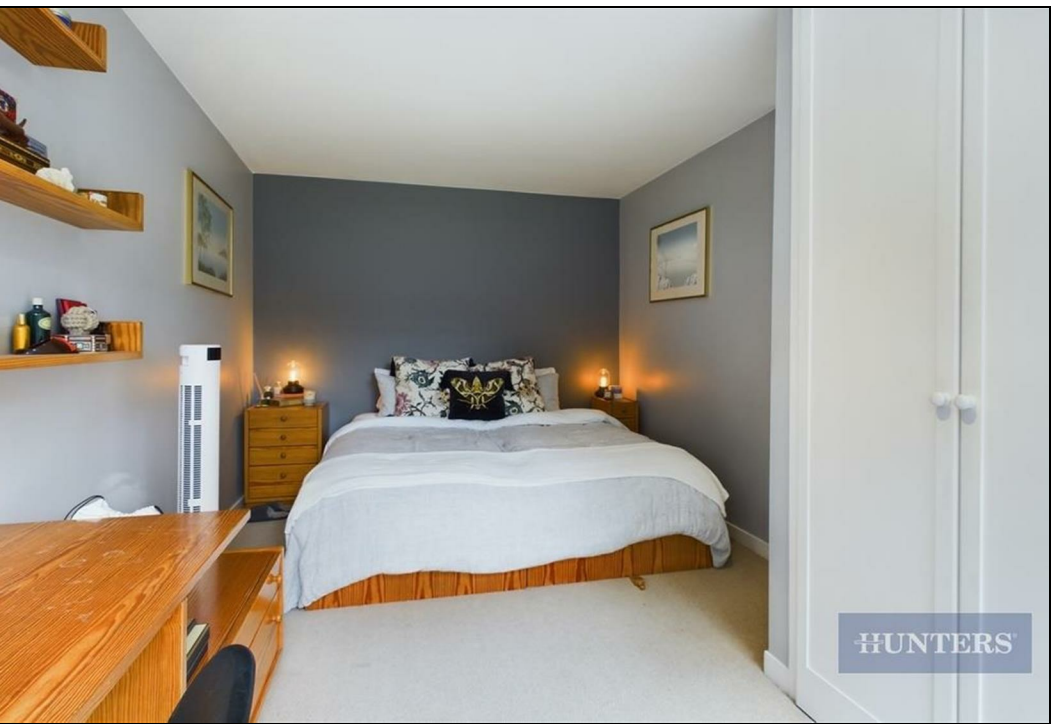
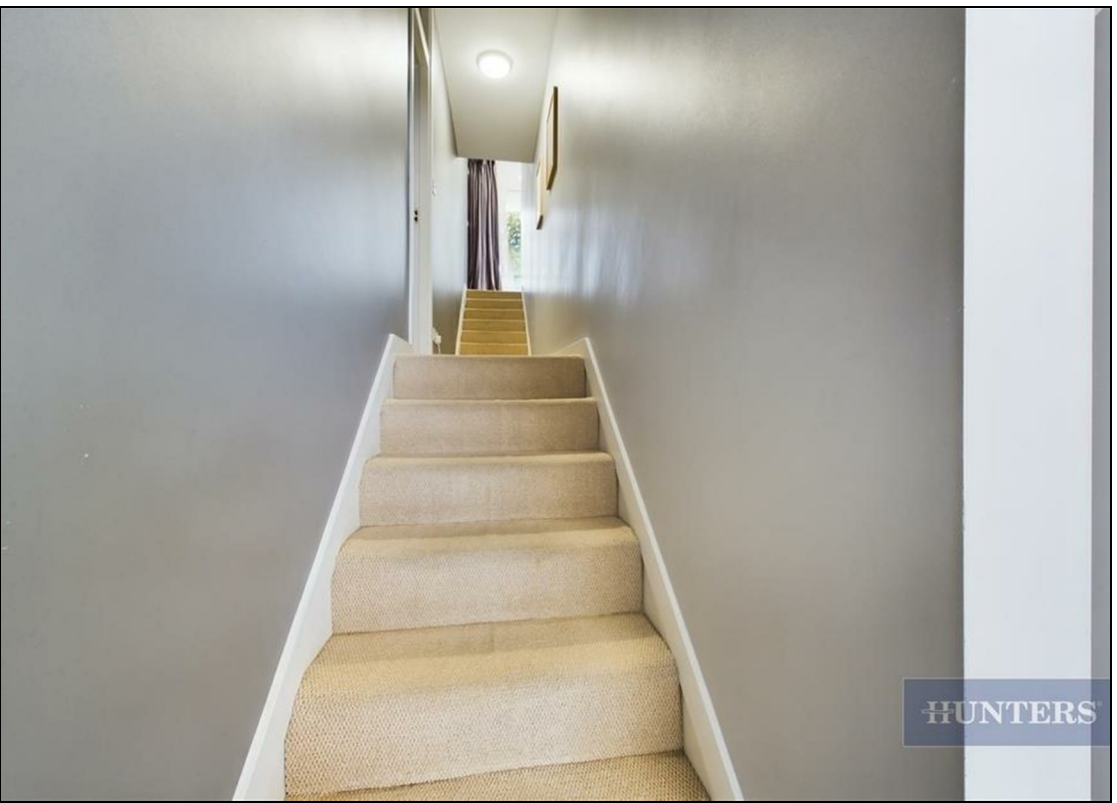


## KEY FEATURES

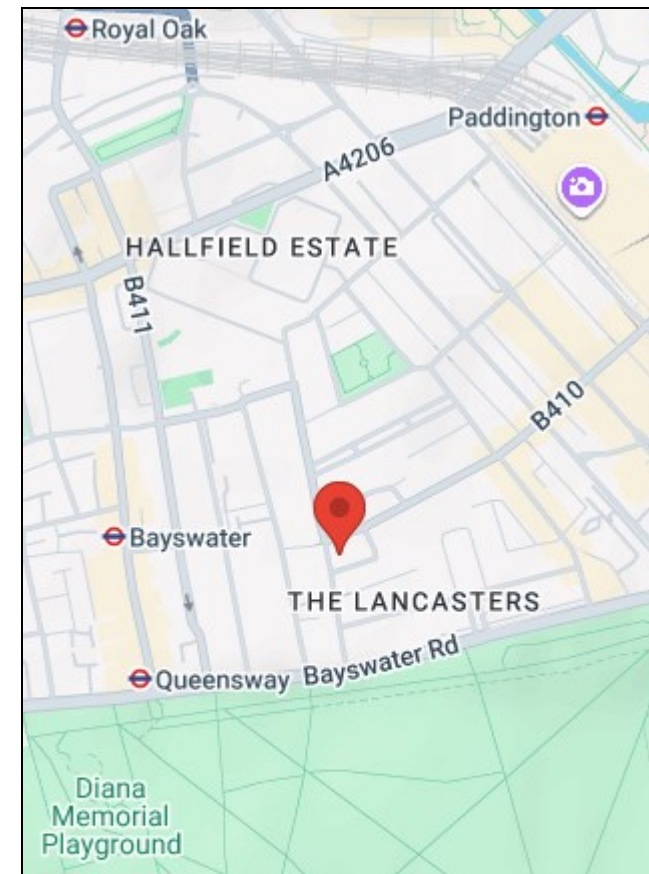
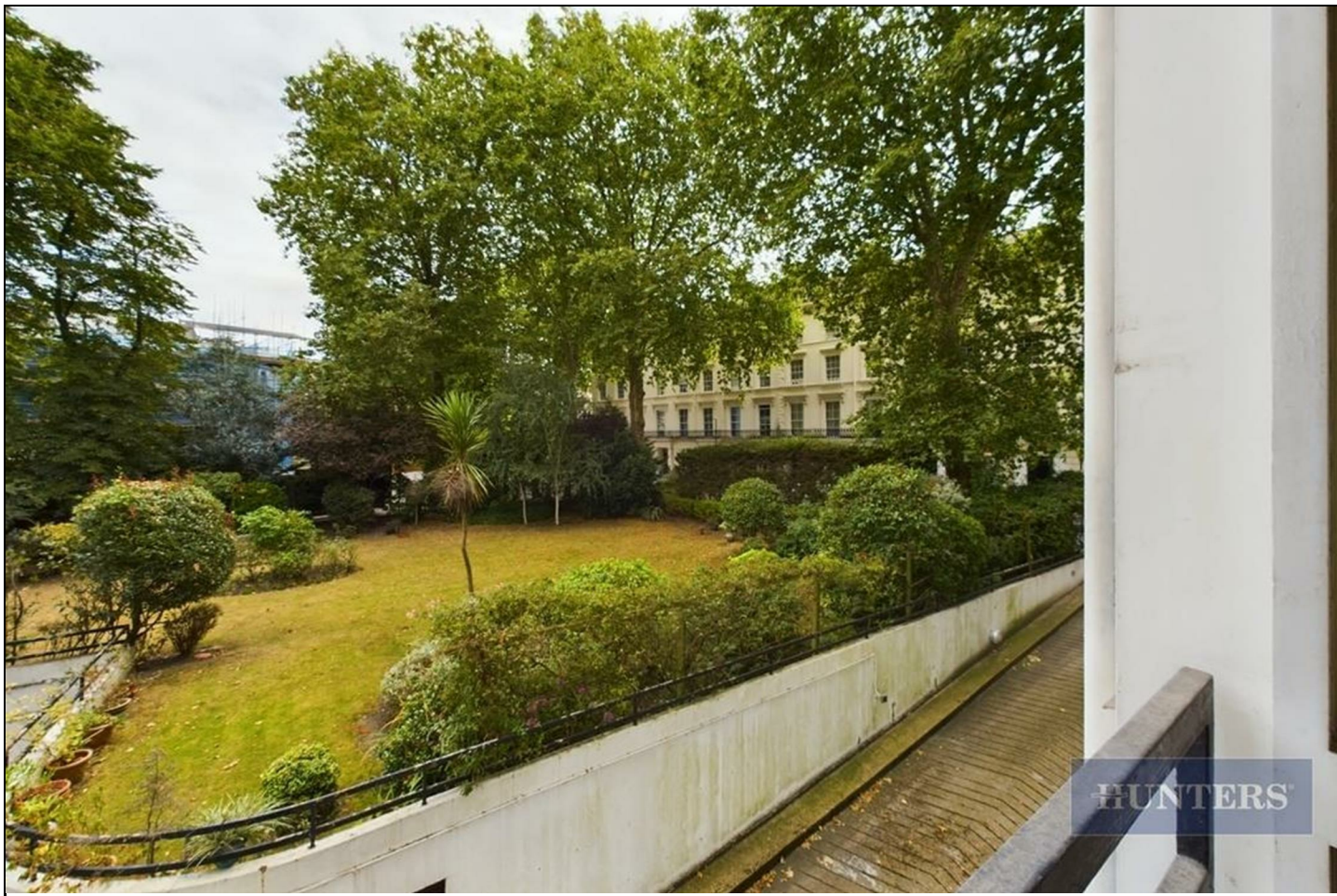
- Available from 24th October 2025 - Fully Furnished
- Modern & Large One Bedroom Apartment
  - Fully Fitted Kitchen
  - Reception & Dining Room
    - Balcony
- Double Bedroom with fitted wardrobes & study area
  - Modern Bathroom
  - Ample Storage
  - Communal Gardens
  - Heating and Hot Water











Energy Efficiency Rating		Environmental Impact (CO <sub>2</sub> ) Rating	
Current	Potential	Current	Potential
Very energy efficient - lower running costs			
(92 plus) <b>A</b>		(92 plus) <b>A</b>	
(81-91) <b>B</b>		(81-91) <b>B</b>	
(69-80) <b>C</b>		(69-80) <b>C</b>	
(55-68) <b>D</b>		(55-68) <b>D</b>	
(39-54) <b>E</b>		(39-54) <b>E</b>	
(21-38) <b>F</b>		(21-38) <b>F</b>	
(1-20) <b>G</b>		(1-20) <b>G</b>	
Not energy efficient - higher running costs			
73			
England & Wales		England & Wales	
EU Directive 2002/91/EC		EU Directive 2002/91/EC	

38 Bedford Place, Southampton, Hampshire, SO15 2DG | 02380 987 720  
[southampton@hunters.com](mailto:southampton@hunters.com) | [www.hunters.com](http://www.hunters.com)



This Hunters business is independently owned and operated by Clegg Properties Ltd | Registered Address 27 Westfield Road, Lymington, Hampshire, England, SO41 3PZ | Registered Number: 06421594 England and Wales | VAT No: 188 0548 76 with the written consent of Hunters Franchising Limited.