



HUNTERS[®]
HERE TO GET *you* THERE



Castle Way, Southampton

Per Calendar Month £1,150 Per Calendar Month



****NO PARKING WITH PROPERTY** ***Redecorated throughout*****

A fantastic example of a one bedroom apartment in French Court, set in close proximity to the City Centre.

Accommodation comprises: entrance hall , double bedroom, family bathroom, a large lounge / diner which leads to the separate kitchen with white goods included. Further benefits include telephone entry, electric heating, and a central location to the transport links of the City.

COUNCIL TAX BAND B

EPC RATING C

38 Bedford Place, Southampton, Hampshire, SO15 2DG | 02380 987 720

southampton@hunters.com | www.hunters.com

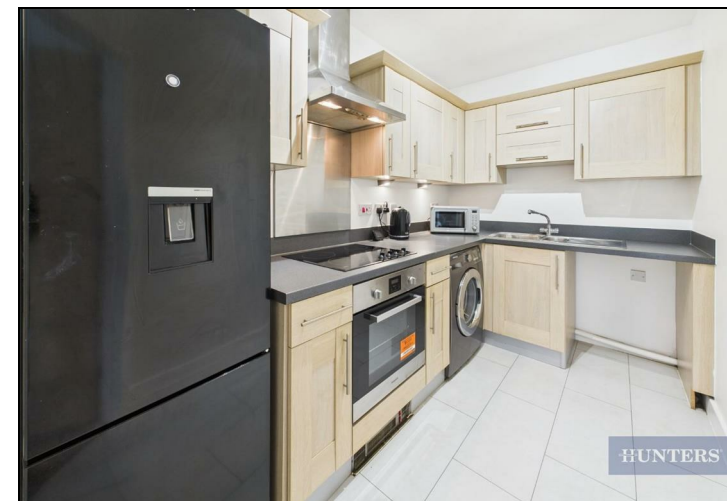


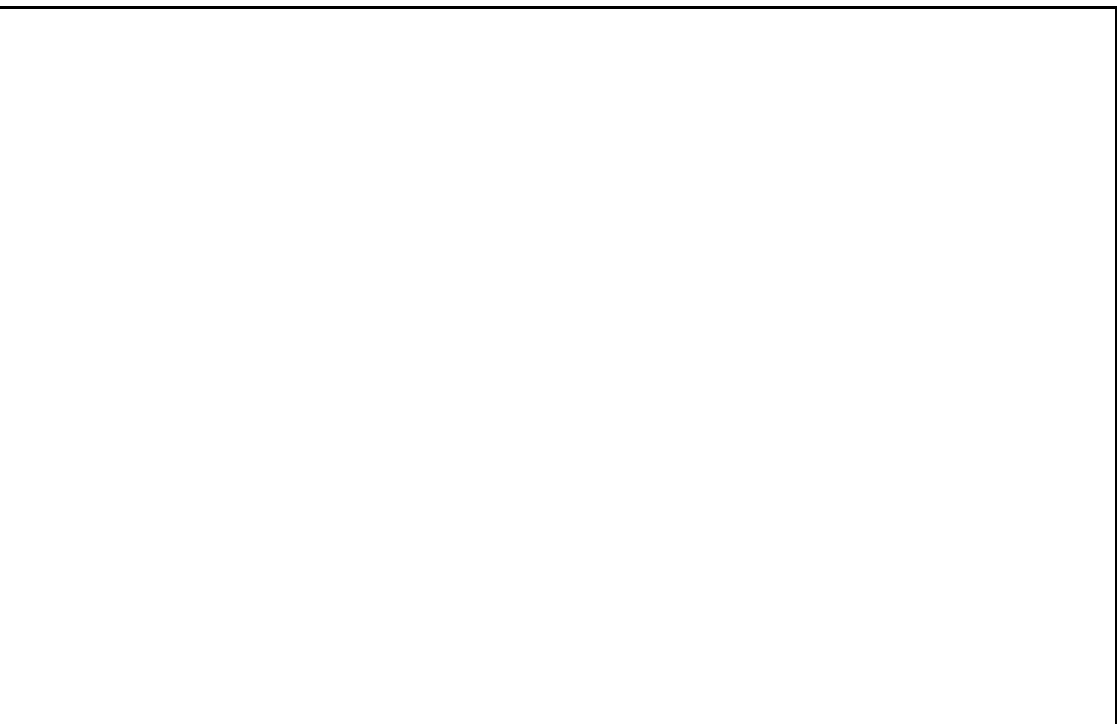
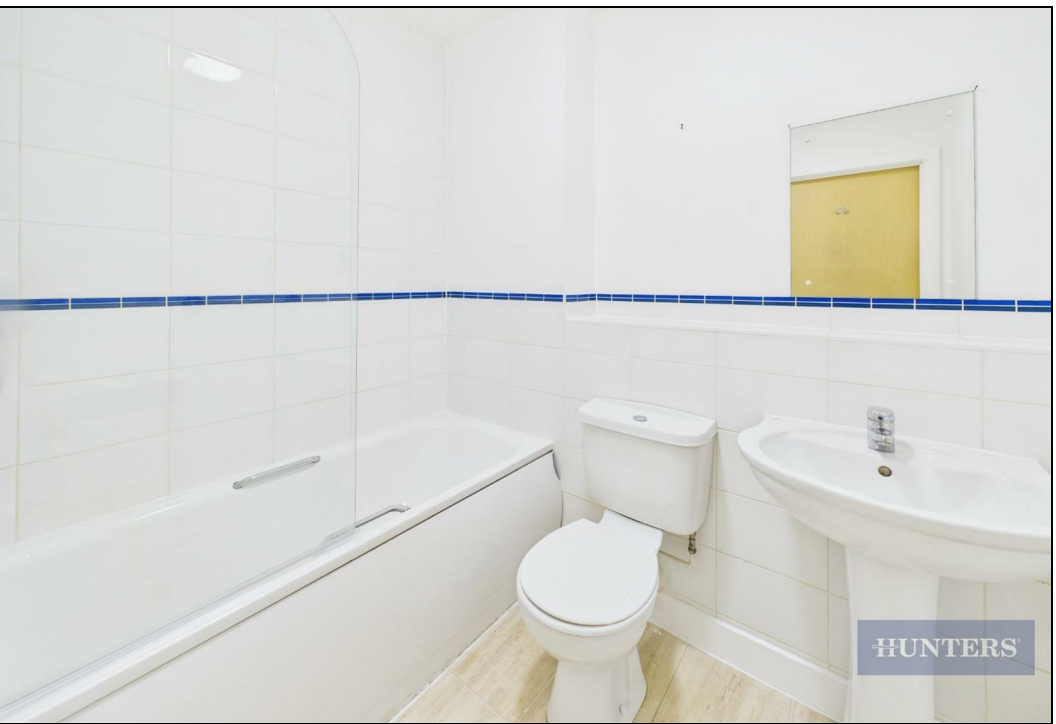
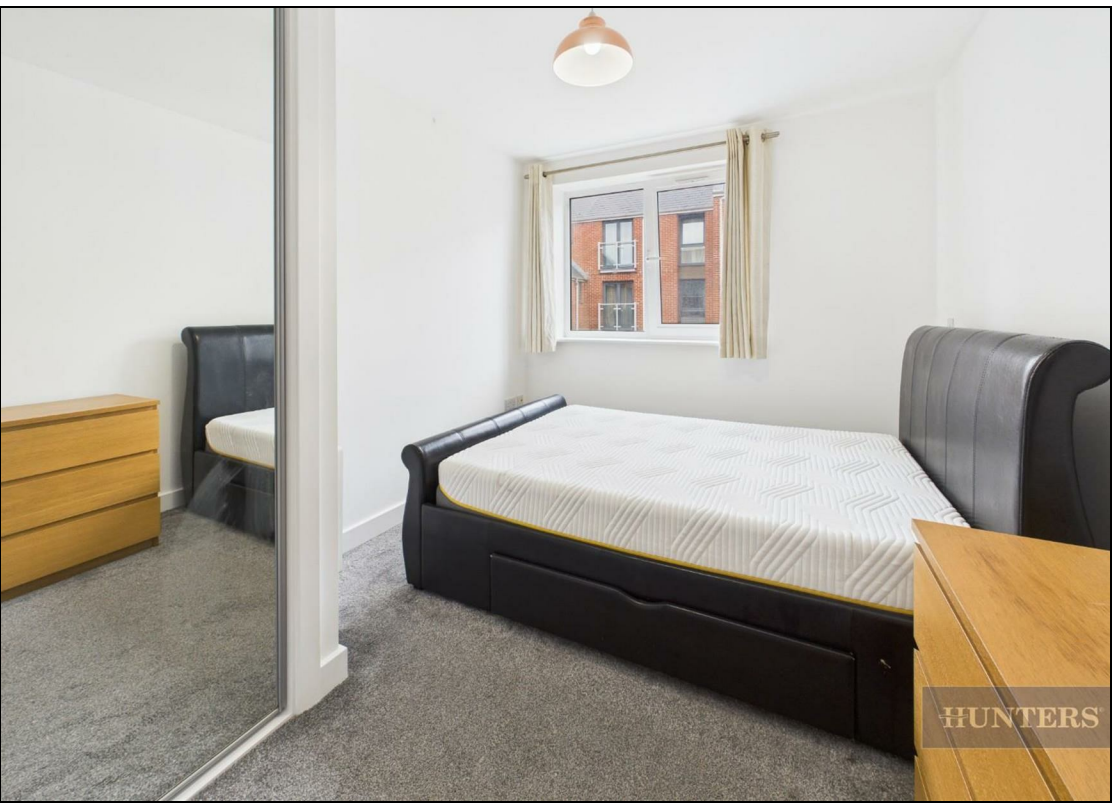
This Hunters business is independently owned and operated by Clegg Properties Ltd | Registered Address 27 Westfield Road, Lymington, Hampshire, England, SO41 3PZ | Registered Number: 06421594 England and Wales | VAT No: 188 0548 76 with the written consent of Hunters Franchising Limited.

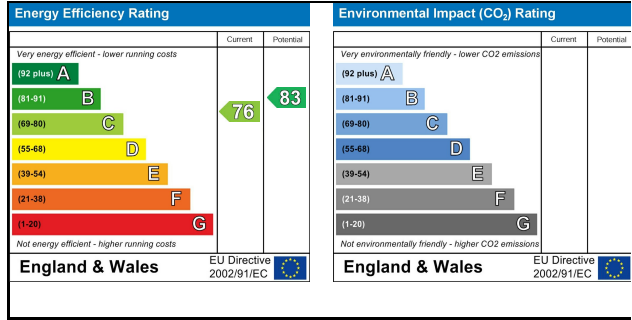
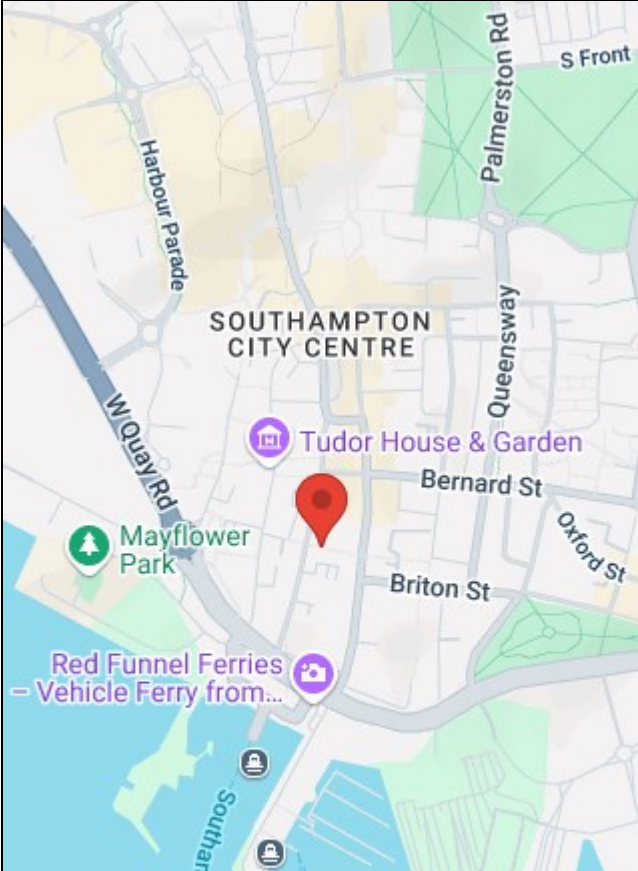
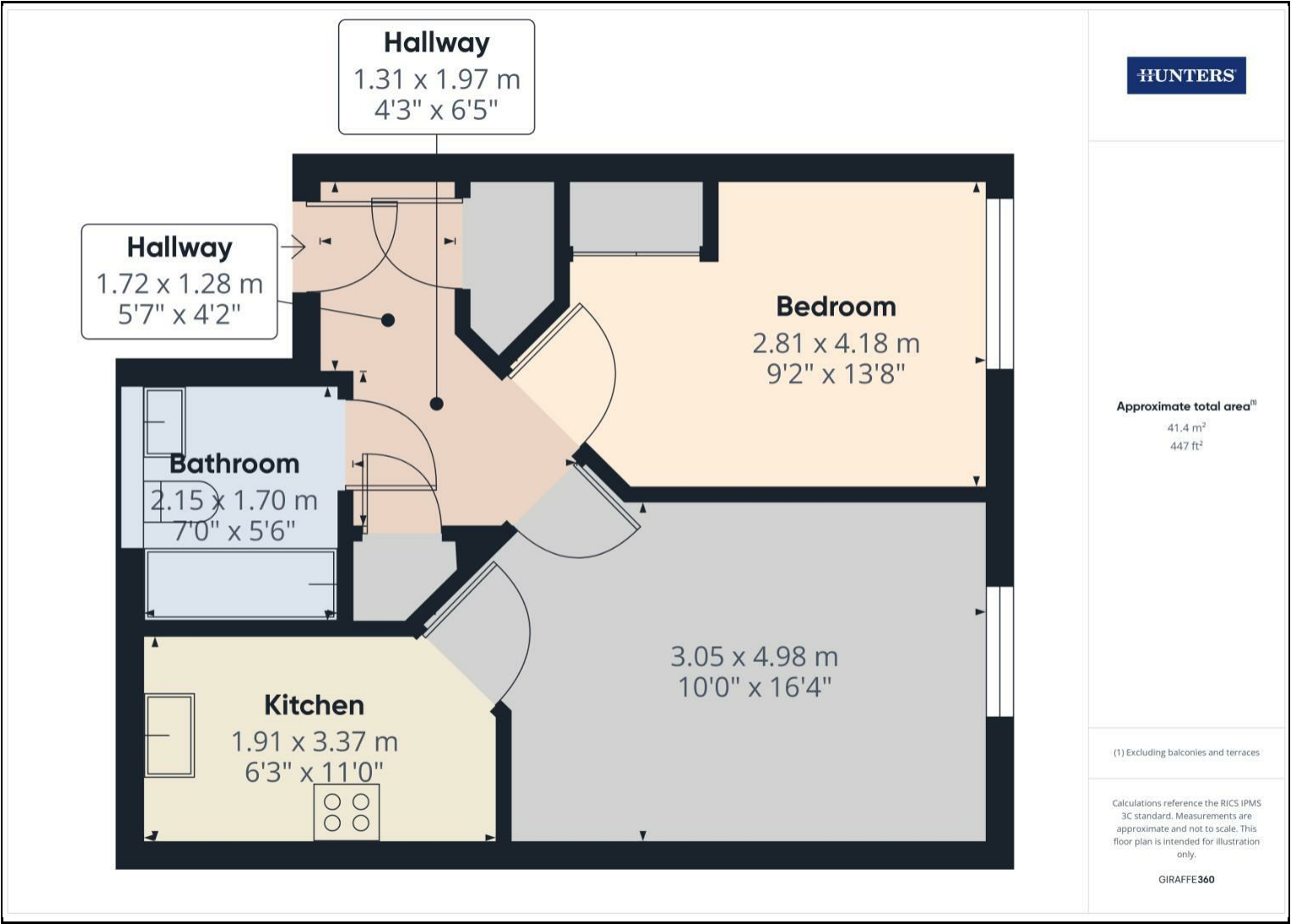


KEY FEATURES

- ONE BEDROOM APARTMENT
 - CENTRAL LOCATION
 - MODERN FLAT
- CLOSE TO LOCAL AMENITIES
- PUBLIC TRANSPORT LINKS NEARBY
- VIRTUAL TOUR AVAILABLE
- COUNCIL TAX BAND B
 - EPC RATING C







38 Bedford Place, Southampton, Hampshire, SO15 2DG | 02380 987 720
southampton@hunters.com | www.hunters.com



This Hunters business is independently owned and operated by Clegg Properties Ltd | Registered Address 27 Westfield Road, Lymington, Hampshire, England, SO41 3PZ | Registered Number: 06421594 England and Wales | VAT No: 188 0548 76 with the written consent of Hunters Franchising Limited.