



HUNTERS[®]
HERE TO GET *you* THERE

 3  2  1 

Wessex Lane, Southampton

Offers In Excess Of £325,000



This beautifully arranged three-bedroom, three-storey home offers spacious living across approximately 85.2 sq.m (916 sq.ft). Ideally suited for families or investment, this property blends comfort with practicality and is located within easy reach of local amenities, schools, and transport links.

Upon entering, you are greeted by a welcoming hallway with access to a convenient downstairs WC. The ground floor comprises a generous living room with French doors opening out to the rear, perfect for entertaining or relaxing with family. A well-appointed kitchen lies to the front of the property, thoughtfully designed with ample storage.

The first floor hosts two well-proportioned bedrooms along with a family bathroom and a second bathroom. The second floor is dedicated to a spacious principal bedroom with excellent natural light, creating a private retreat.

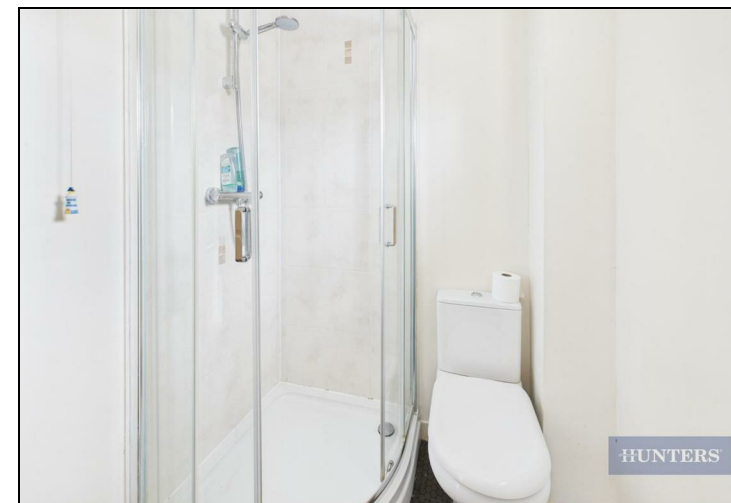
This home is finished to a high standard throughout and offers flexible accommodation over three levels.

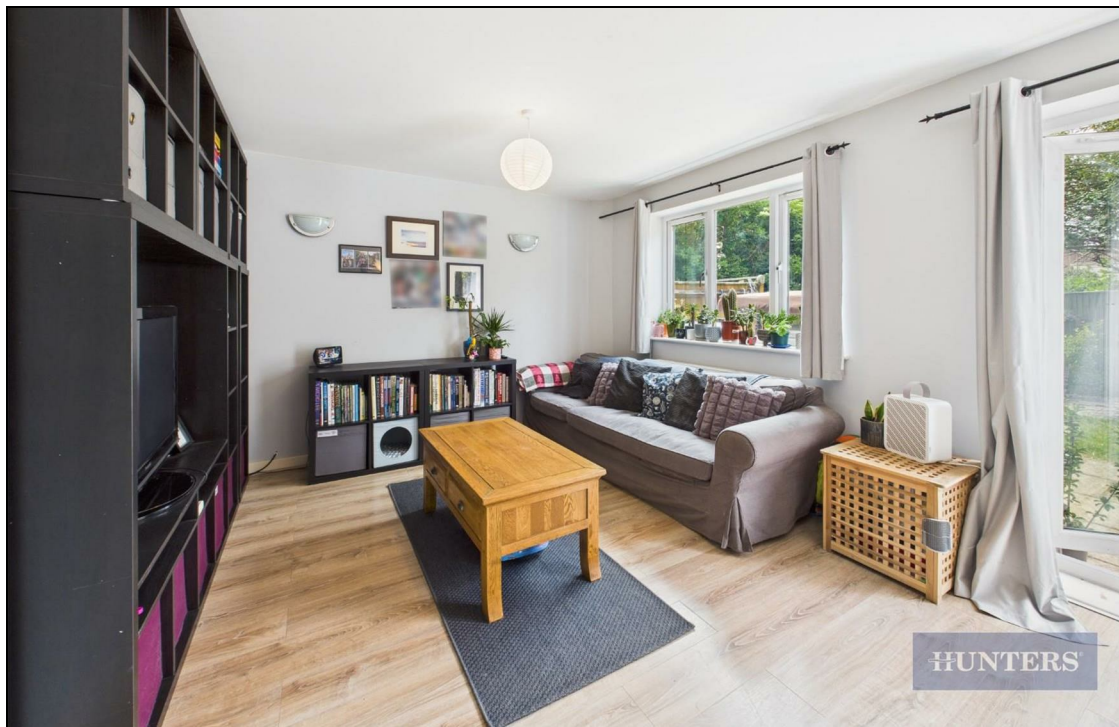
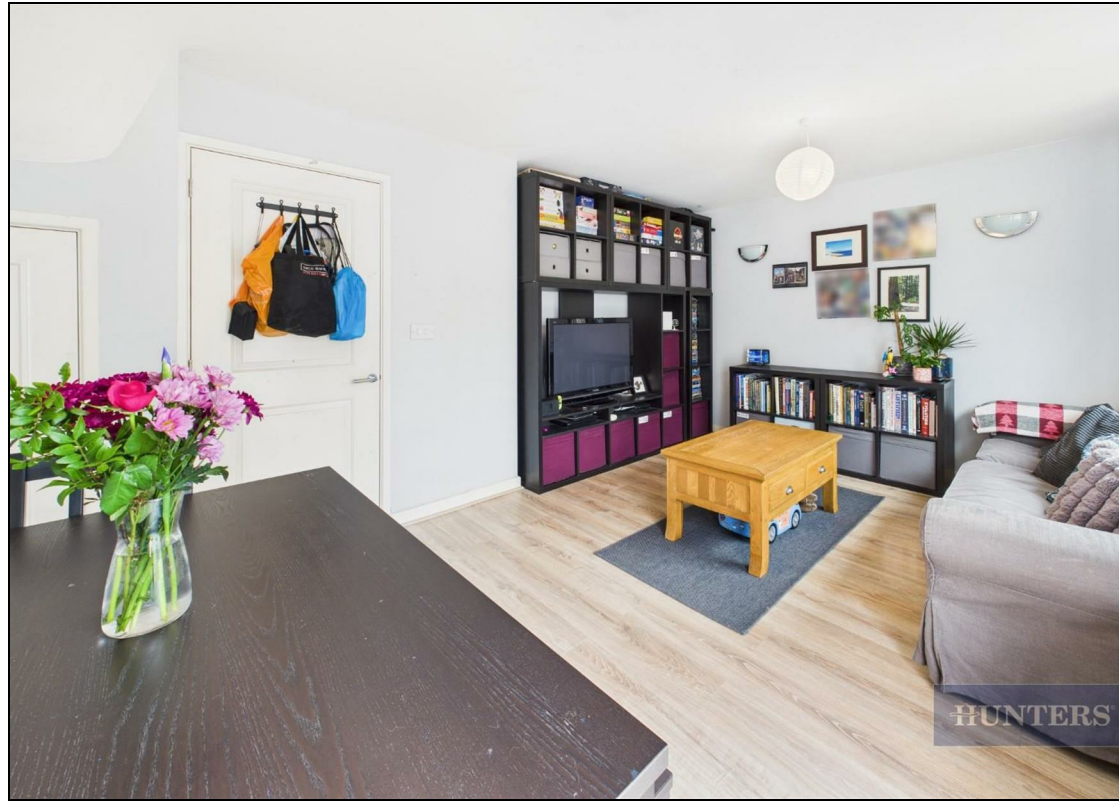
There is easy access to Southampton City Centre with its wide range of shopping facilities including the West Quay Shopping Centre. There is easy access to the M3/M27 motorway networks as well as Southampton International Airport and Southampton University. Mainline railway stations are available in Southampton City Centre and Southampton Parkway which is accessed via Junction 5 of the M27. Recreational facilities can be found at The Sports Centre and Southampton Common which has over 300 acres of parkland.



KEY FEATURES

- Town House
- Three Double Bedrooms
- Modern Kitchen
- Separate Lounge / Diner
- Two Bathrooms and WC
- Low Maintenance Rear Garden
 - Skylight on Stairs
 - One Parking Space
 - Ample Storage
- Swaythling Location

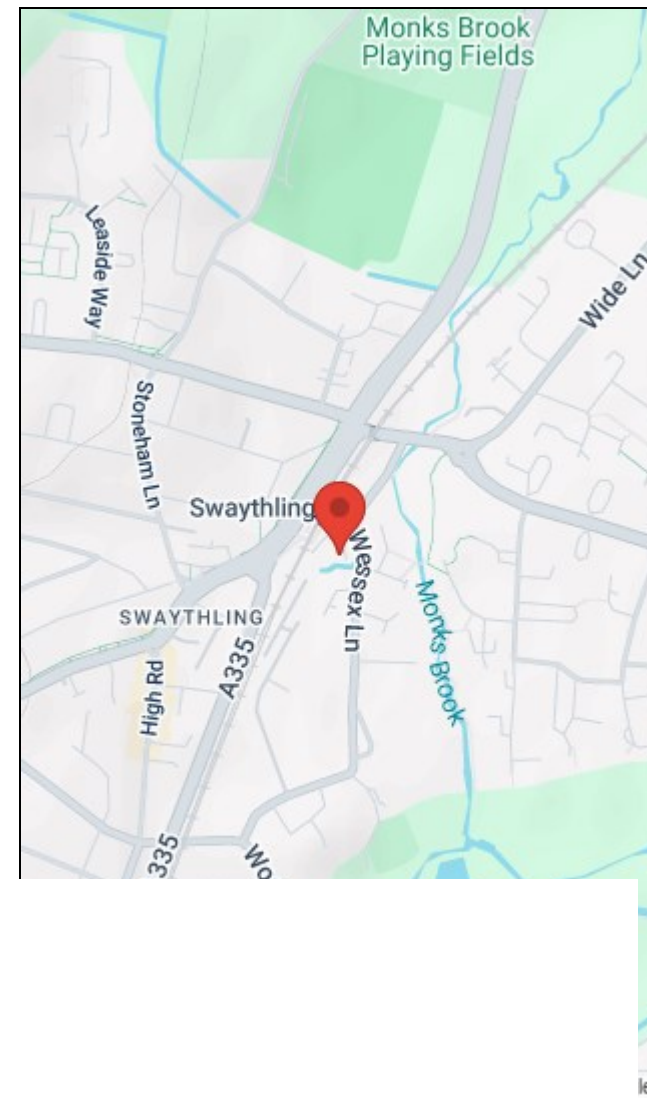









GIRAFFE360



England & Wales	EU Directive 2002/91/EC	
-----------------	----------------------------	---

England & Wales	EU Directive 2002/91/EC	
-----------------	----------------------------	---

This Hunters business is independently owned and operated by Clegg Properties Ltd | Registered Address 27 Westfield Road, Lymington, Hampshire, England, SO41 3PZ | Registered Number: 06421594 England and Wales | VAT No: 188 0548 76 with the written consent of Hunters Franchising Limited.