



**HUNTERS<sup>®</sup>**  
HERE TO GET *you* THERE

 2  2  1  B

# Guildhall Apartments, Park Walk, SO14

Guide Price £300,000



With panoramic views across parkland, the city and along Southampton Water to the Isle of Wight, this generous apartment is in a highly desirable location at the heart of Southampton. Guildhall Apartments were completed in 2016 and were finished to a very high standard throughout. This superb apartment was purchased off-plan by the current owners for weekend use therefore, the apartment is offered virtually as new and no forward chain!

The property benefits from double glazing throughout, under floor heating, a geothermal heating system, access to an additional roof terrace. The allocated undercroft parking, generous undercroft secure cycle storage are both accessed via a car lift.

Upon entering the apartment through the hallway you are welcomed by an open plan generous sized reception room with floor to ceiling windows offering stunning views across the city. The balcony is accessible from here and the primary bedroom. The modern fully fitted kitchen features Bosch appliances and quartz countertops. In the hallway, there is a double cupboard which is the perfect spot for washer/dryer, a cloakroom and storage facilities that also houses the geothermal heating system.

The master bedroom has oversized windows offering wide views of the park and access to the balcony, double built in wardrobe and ensuite shower room. The

The

Ste  
into  
arc

roll

38 Bedford Place, Southampton, Hampshire, SO15 2DG | 02380 987 720  
[southampton@hunters.com](mailto:southampton@hunters.com) | [www.hunters.com](http://www.hunters.com)

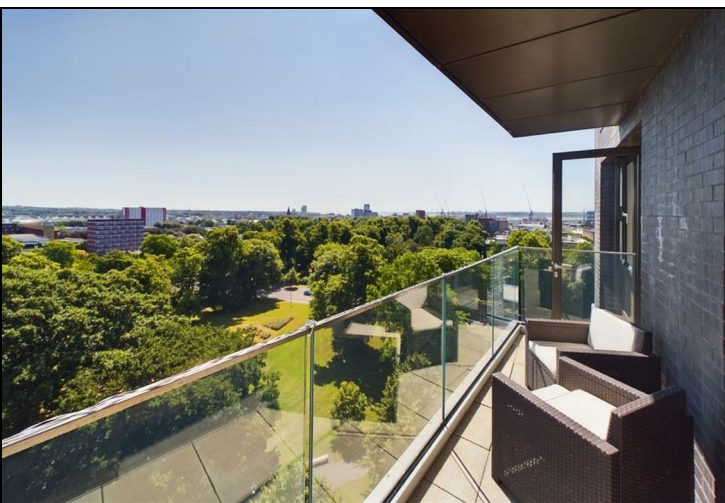


This Hunters business is independently owned and operated by Clegg Properties Ltd | Registered Address 27 Westfield Road, Lymington, Hampshire, England, SO41 3PZ | Registered Number: 06421594 England and Wales | VAT No: 188 0548 76 with the written consent of Hunters Franchising Limited.



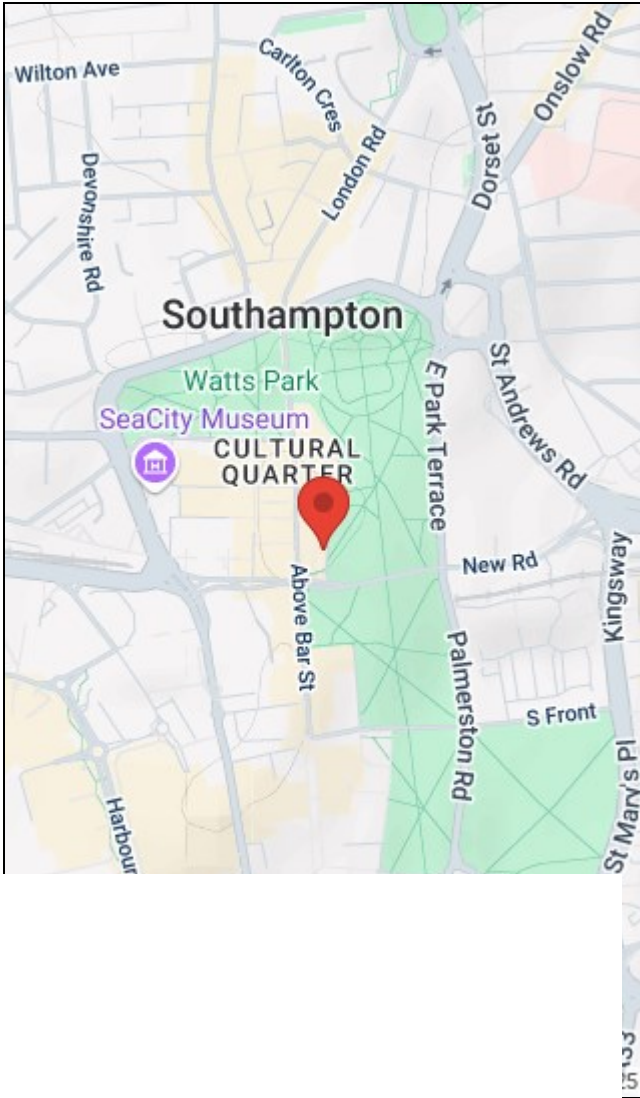
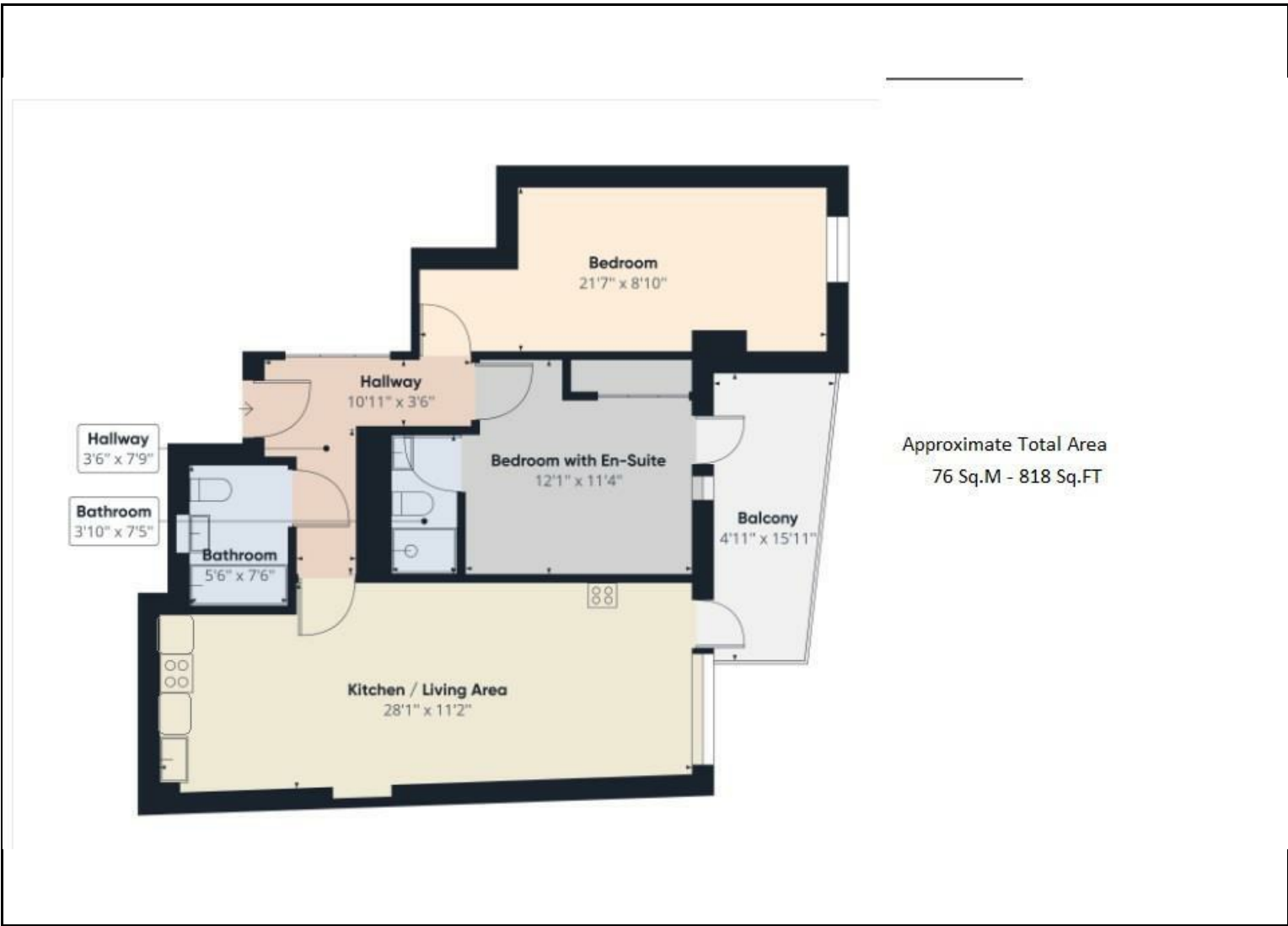
## KEY FEATURES

- No Forward Chain
- Panoramic Views
- Modern Open Plan Living
- Two Double Bedrooms
  - Large Balcony
  - Fully Fitted Kitchen
- Two Bathrooms (One Ensuite)
  - Central Location
- Lease : 118 years remaining approx.
  - EPC : 'B'









Energy Efficiency Rating			Environmental Impact (CO <sub>2</sub> ) Rating		
	Current	Potential		Current	Potential
Very energy efficient - lower running costs			Very environmentally friendly - lower CO <sub>2</sub> emissions		
(92 plus) <b>A</b>			(92 plus) <b>A</b>		
(81-91) <b>B</b>			(81-91) <b>B</b>		
(69-80) <b>C</b>			(69-80) <b>C</b>		
(55-68) <b>D</b>			(55-68) <b>D</b>		
(39-54) <b>E</b>			(39-54) <b>E</b>		
(21-38) <b>F</b>			(21-38) <b>F</b>		
(1-20) <b>G</b>			(1-20) <b>G</b>		
Not energy efficient - higher running costs			Not environmentally friendly - higher CO <sub>2</sub> emissions		
England & Wales	EU Directive 2002/91/EC		England & Wales	EU Directive 2002/91/EC	

38 Bedford Place, Southampton, Hampshire, SO15 2DG | 02380 987 720  
[southampton@hunters.com](mailto:southampton@hunters.com) | [www.hunters.com](http://www.hunters.com)



This Hunters business is independently owned and operated by Clegg Properties Ltd | Registered Address 27 Westfield Road, Lymington, Hampshire, England, SO41 3PZ | Registered Number: 06421594 England and Wales | VAT No: 188 0548 76 with the written consent of Hunters Franchising Limited.