

**HUNTERS**<sup>®</sup>  
HERE TO GET *you* THERE

 4  2  1  

# Broadlands Road, Southampton

## Offers In Excess Of £300,000

**HUNTERS**<sup>®</sup>  
HERE TO GET *you* THERE

**\*\*NO ONWARD CHAIN\*\***

Located in sought after Broadlands Road in Swaythling, situated just a stone's throw from Southampton University Highfield Campus and the City Centre is this excellent opportunity offering both a family home or, a rental investment/ HMO with C4 use (currently let out on a rolling contract at £1400 pcm.).

This property comprises of a reception, kitchen, four double bedrooms and two separate shower rooms with W.C. The front of the house offers a pretty front lawn with pathway, with the rear garden being part hard standing and part laid to lawn. A garage with rear access provides storage space or potential for off road parking. Further, this property benefits from gas central heating and double glazing.

Tenure: Freehold  
Council Tax band: C  
EPC: D

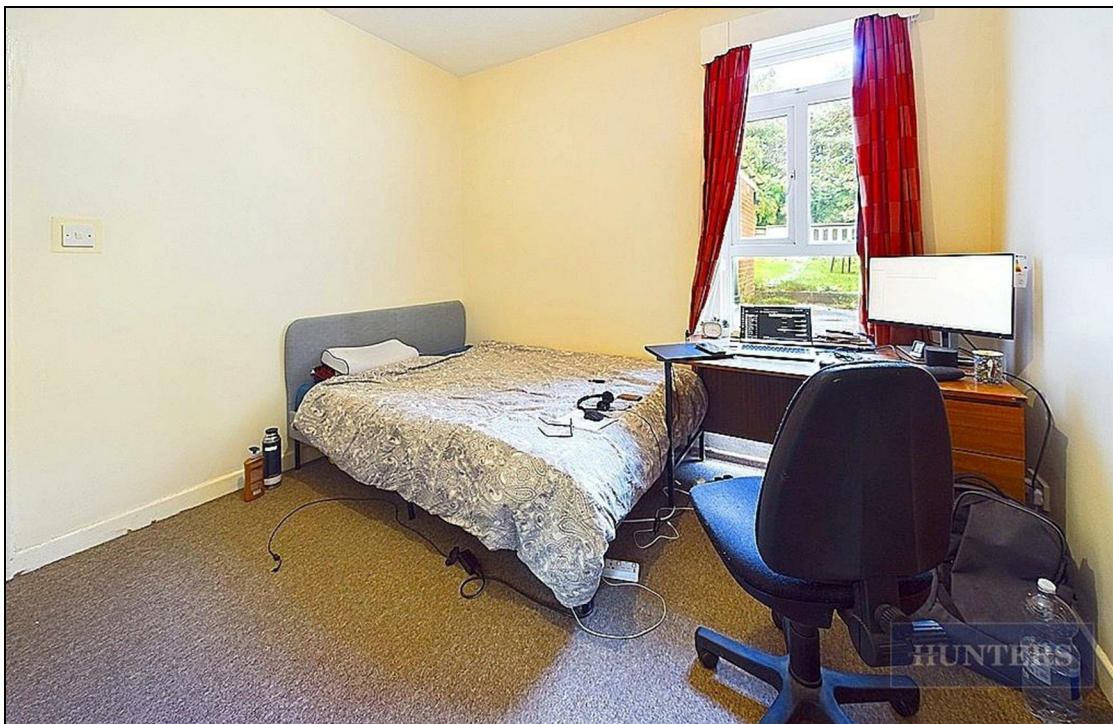
35 Bedford Place, Southampton, Hampshire, SO15 2DG | 02380 987720  
southampton@hunters.com | www.hunters.com

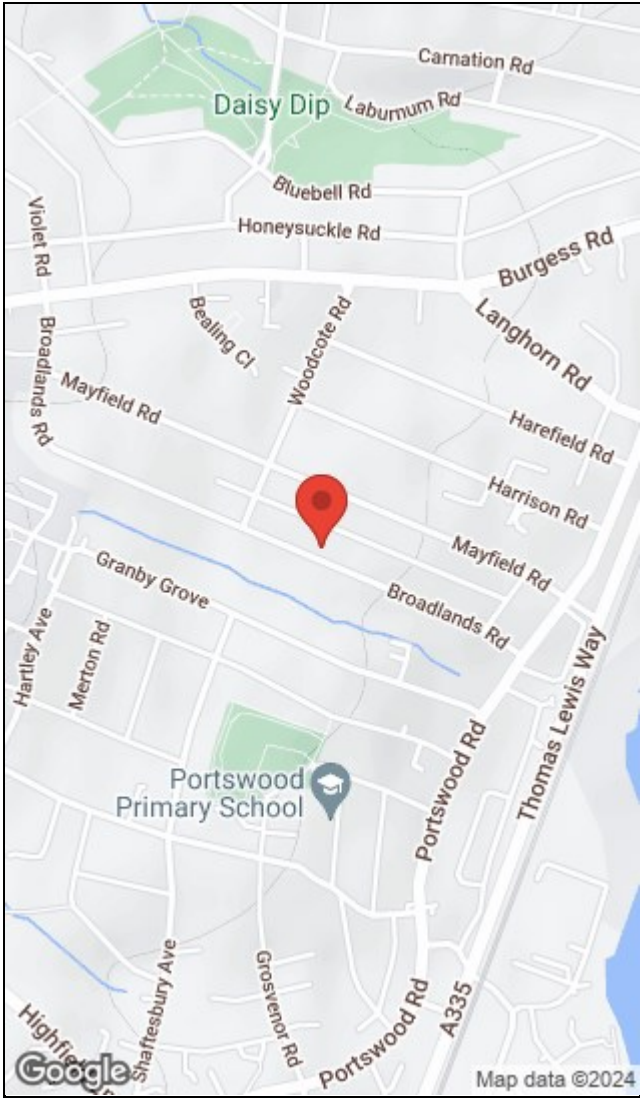
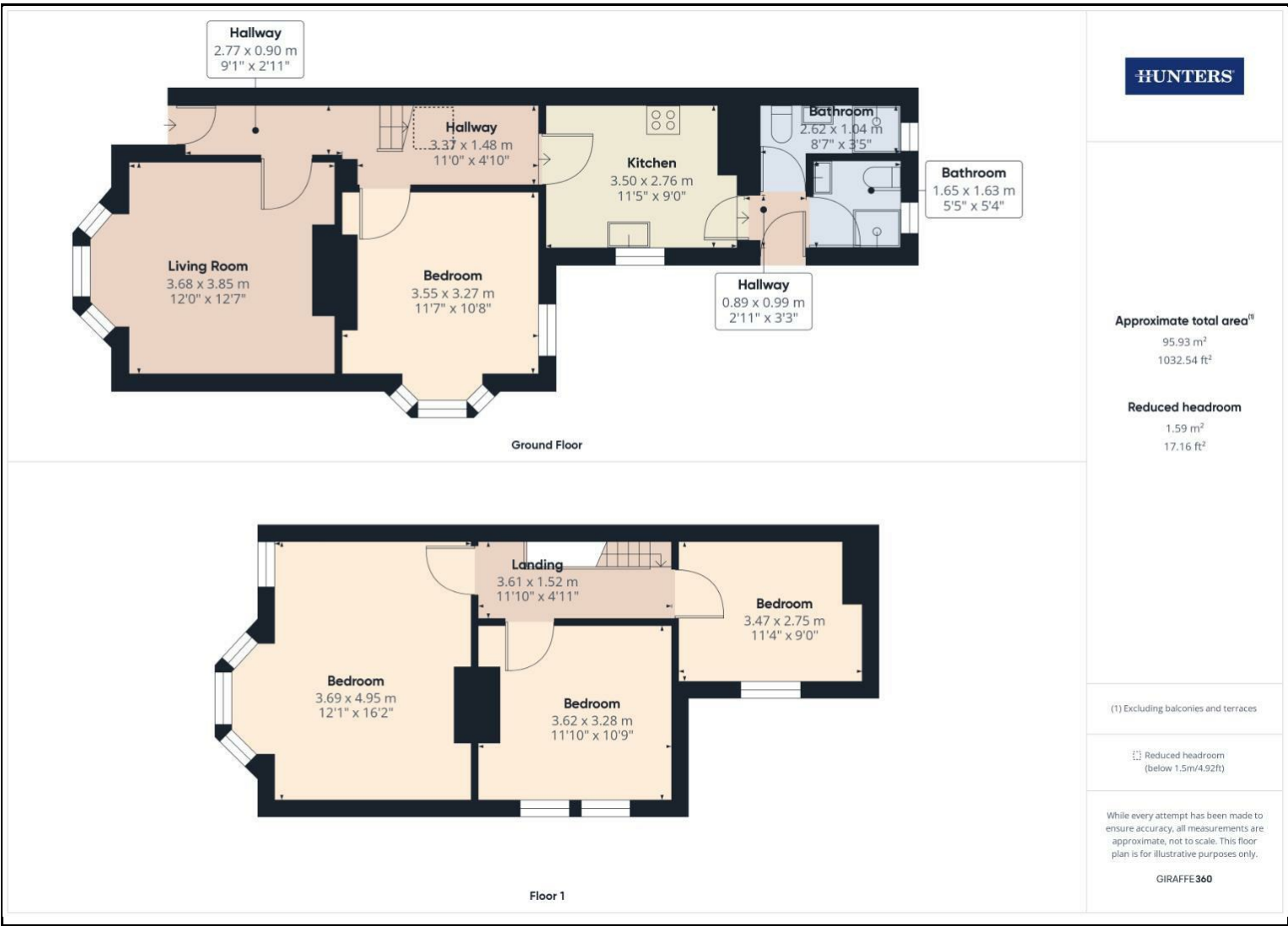


## KEY FEATURES

- THREE/ FOUR BEDROOMS
  - NO CHAIN
  - DOUBLE GLAZING
  - GAS CENTRAL HEATING
- CURRENTLY LET OUT AT £1400pcm
- AMMENTIES WITHIN WALKING DISTANCE
  - 0.5 MILES FROM THE UNIVERSITY OF SOUTHAMPTON
  - TWO SHOWER ROOMS
  - EXCELLENT COMMUTER LINKS
  - HMO WITH C4 USE







Energy Efficiency Rating		Environmental Impact (CO <sub>2</sub> ) Rating	
Current	Potential	Current	Potential
	81		
Very energy efficient - lower running costs (92 plus) <b>A</b> (81-91) <b>B</b> (69-80) <b>C</b> (55-68) <b>D</b> (39-54) <b>E</b> (21-38) <b>F</b> (1-20) <b>G</b> Not energy efficient - higher running costs		Very environmentally friendly - lower CO <sub>2</sub> emissions (92 plus) <b>A</b> (81-91) <b>B</b> (69-80) <b>C</b> (55-68) <b>D</b> (39-54) <b>E</b> (21-38) <b>F</b> (1-20) <b>G</b> Not environmentally friendly - higher CO <sub>2</sub> emissions	
EU Directive 2002/91/EC		EU Directive 2002/91/EC	

35 Bedford Place, Southampton, Hampshire, SO15 2DG | 02380 987720  
 southampton@hunters.com | www.hunters.com



This Hunters business is independently owned and operated by Clegg Properties Ltd | Registered Address: Frenchfield, 23 Solent Avenue, Lymington, Hampshire, SO41 3SD | Registered Number: 6421594 England and Wales | VAT No: 188 0548 76 with the written consent of Hunters Franchising Limited.