



HUNTERS[®]

HERE TO GET *you* THERE

 4  2  2 

Broadlands Road, Southampton

Per Calendar Month £1,600 Per Calendar Month



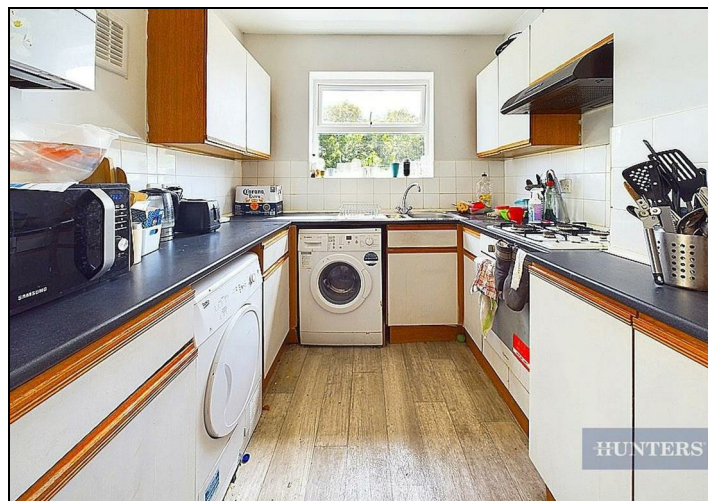
****STUDENT LET **** Four bedroom house suitable for students located on Broadlands Road in Swaythling. The property is furnished and comprises lounge, kitchen/diner, four bedrooms and a modern shower room. Further benefits include garden, off-road parking for one car, gas central heating and double glazing. Available July 2024 an early viewing is highly recommended.

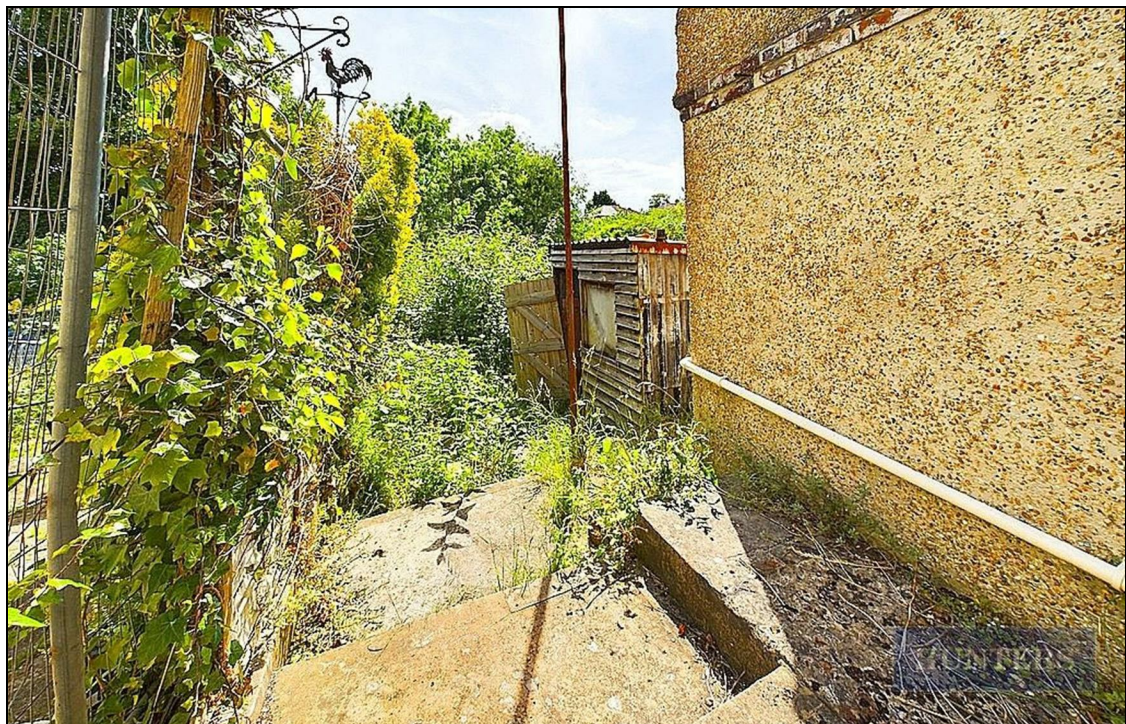
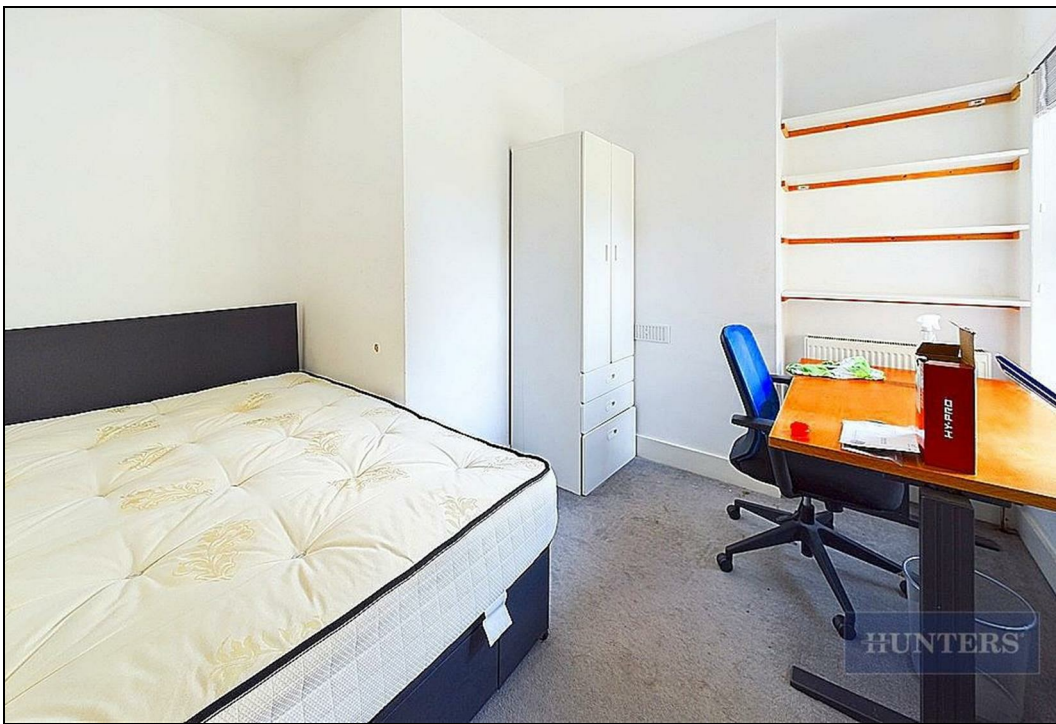
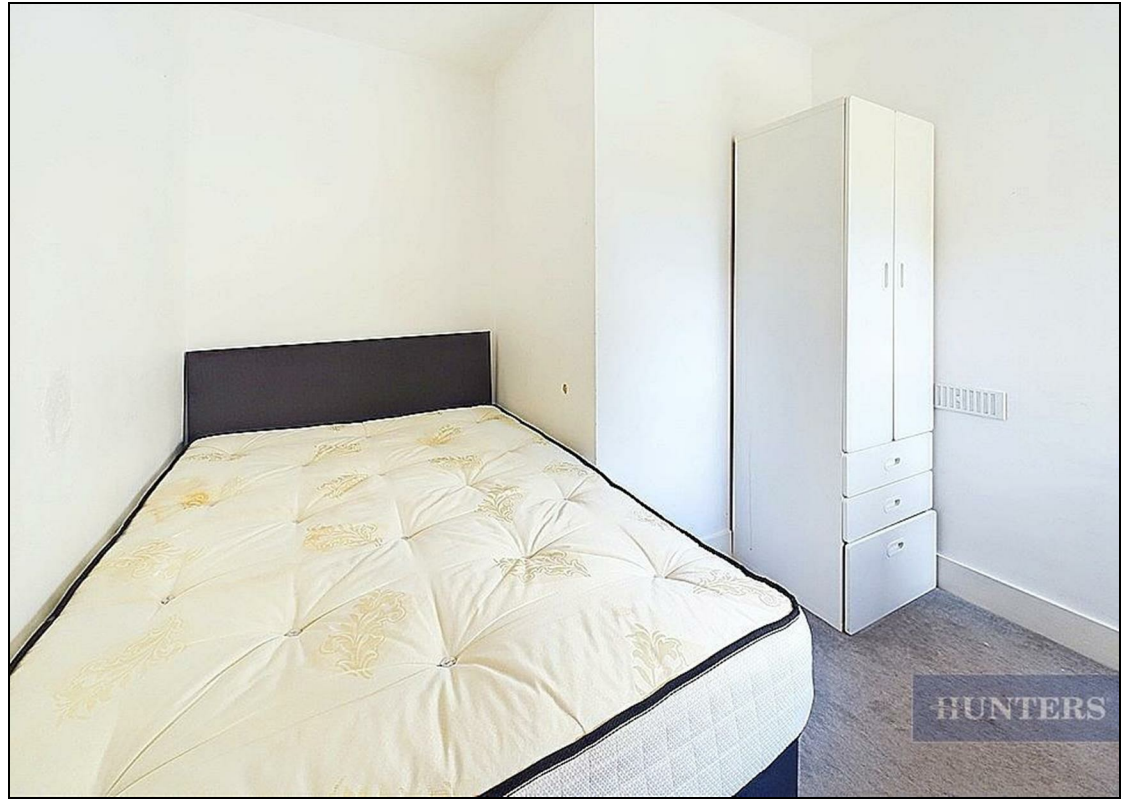
35 Bedford Place, Southampton, Hampshire, SO15 2DG | 02380 987720
southampton@hunters.com | www.hunters.com

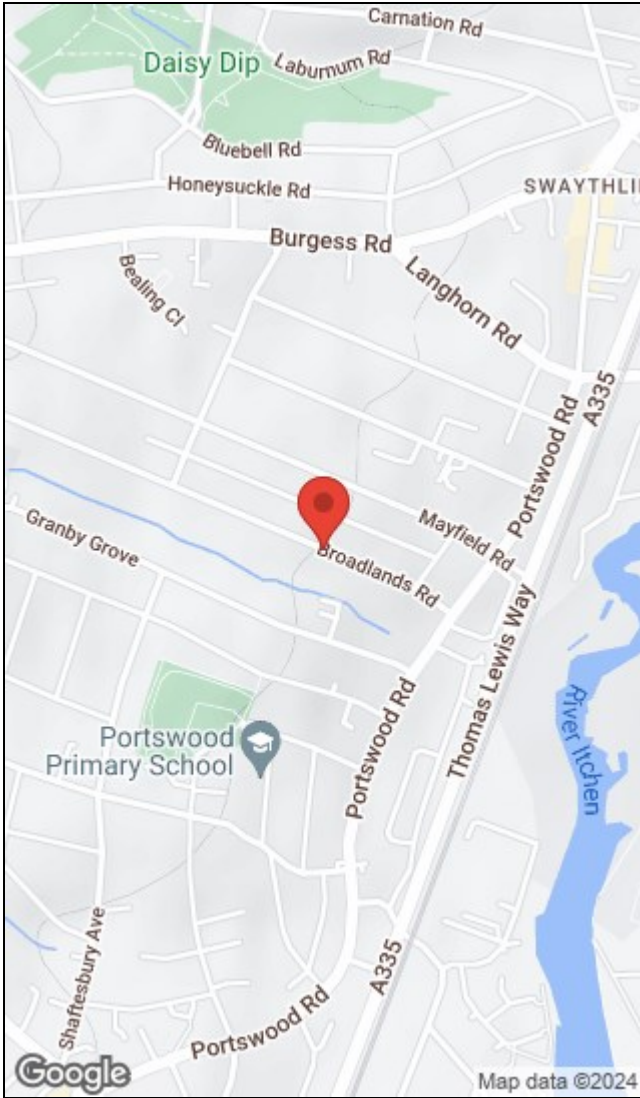
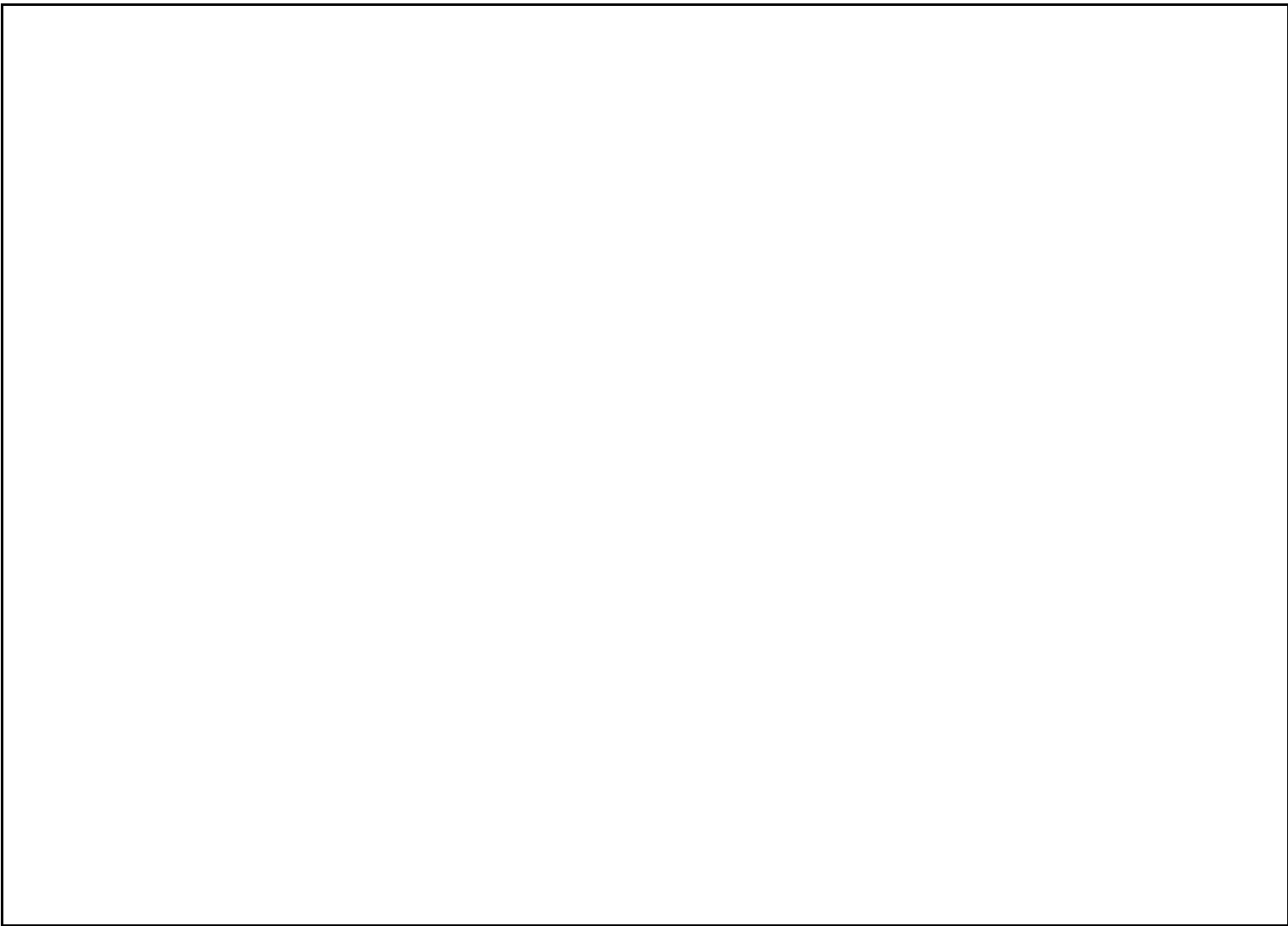


KEY FEATURES

- FOUR DOUBLE BEDROOMS
- STUDENT HOUSE
- AVAILABLE JULY 2024
 - FURNISHED
 - LOUNGE/DINER
 - GARDEN
- DOUBLE GLAZING
- GAS CENTRAL HEATING







Energy Efficiency Rating		Environmental Impact (CO ₂) Rating	
	Current	Potential	
Very energy efficient - lower running costs			Very environmentally friendly - lower CO ₂ emissions
(92 plus) A			(92 plus) A
(81-91) B			(81-91) B
(69-80) C			(69-80) C
(55-68) D			(55-68) D
(39-54) E			(39-54) E
(21-38) F			(21-38) F
(1-20) G			(1-20) G
Not energy efficient - higher running costs			Not environmentally friendly - higher CO ₂ emissions
England & Wales	EU Directive 2002/91/EC		England & Wales
			EU Directive 2002/91/EC

35 Bedford Place, Southampton, Hampshire, SO15 2DG | 02380 987720
 southampton@hunters.com | www.hunters.com



This Hunters business is independently owned and operated by Clegg Properties Ltd | Registered Address: Frenchfield, 23 Solent Avenue, Lymington, Hampshire, SO41 3SD | Registered Number: 6421594 England and Wales | VAT No: 188 0548 76 with the written consent of Hunters Franchising Limited.