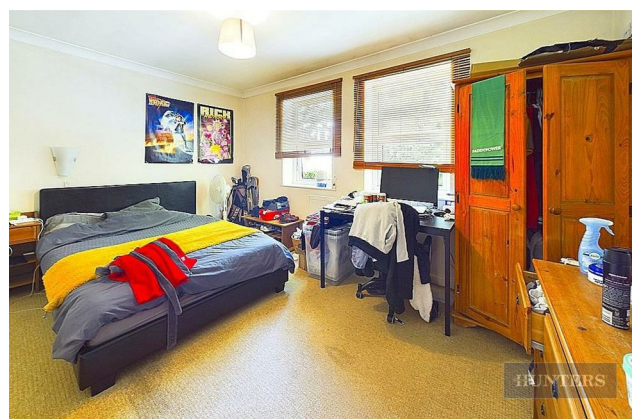


Flat 2, 385 Portswood Road, Southampton, SO17 2LF

£1,050 Per Calendar Month

Property Images



HUNTERS[®]

HERE TO GET *you* THERE

Property Images



Floorplan



EPC

Energy Efficiency Rating		Current	Potential
<i>Very energy efficient - lower running costs</i>			
(92 plus) A			
(81-91) B			
(69-80) C			
(55-68) D			
(39-54) E			
(21-38) F			
(1-20) G			
<i>Not energy efficient - higher running costs</i>			
England & Wales	EU Directive 2002/91/EC		

Map



Details

Type: Flat Beds: 2 Bathrooms: 1 Receptions: null Tenure:

Summary

****SHARERS OR STUDENT**** Two bedroom furnished flat on the door step on Portswood. This flat is brought to the market on the first floor and available from the start of July. It comes ready available for either two working professionals or student sharers. There are two double bedrooms, bathroom with shower over bath, open plan kitchen and living room. The property will come with a parking option, gas central heating, gas hob, mixer tap shower and double double glazing. The flat is 0.6 miles to Highfield Campus, 0.1 miles to Sainburys's Portswood and 1.5 miles from London Road. For those commuting out of area, the M27 junction 5 is 1.7 miles and M3 via Chilowrth Roundabout 2.6 miles.

Features

• STUDENT PROPERTY • FURNISHED • AVAILABLE 1ST JULY • LOCATED IN PORTSWOOD • PUBLIC TRANSPORT LINKS NEARBY • LOCAL AMENITIES NEARBY • WHITE GOODS • PARKING FOR ONE CAR • EPC:C