



HUNTERS[®]

HERE TO GET *you* THERE



HUNTERS

Avro Close, Southampton, SO15 4AE

Asking Price £400,000

HUNTERS[®]
HERE TO GET *you* THERE

A fantastic three storey, six bedroom licensed HMO with a gross rent of £3,650pcm (including bills).

An entrance hall, leading to a utility room, bedroom 1, bedroom 2 & Shower Room.

The first floor has two bedrooms and the communal kitchen/ living space.

The second floor, has 2 further bedrooms, one of which has an ensuite and there is a separate bathroom.

To the rear of the property there is a low maintenance garden.

At the front of the property there is off road parking.

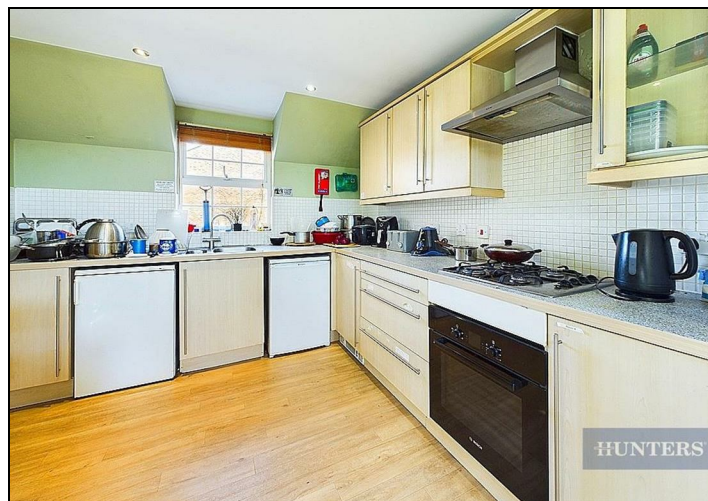
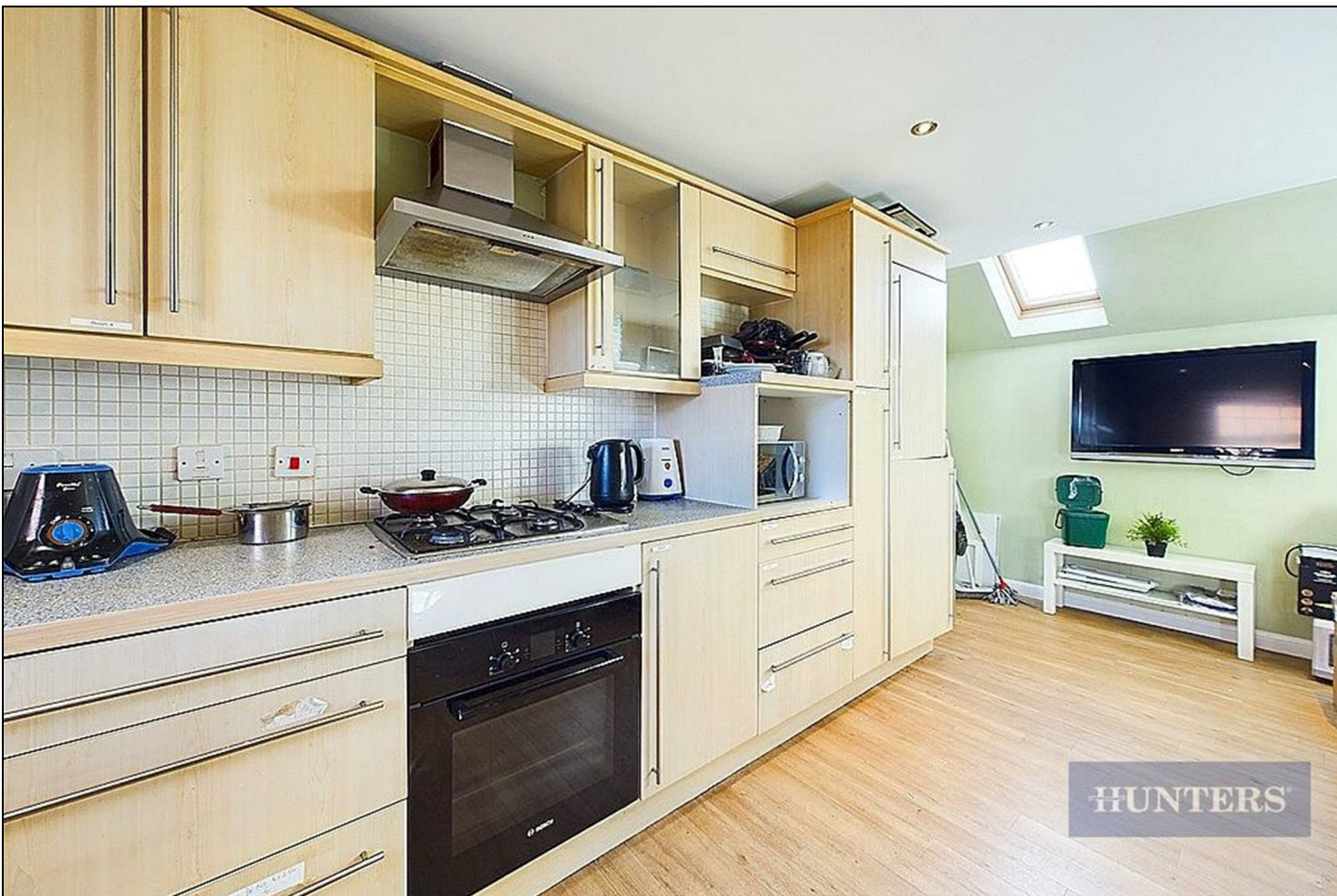
The property has C4 planning permission for use as an HMO and is rented on an individual room basis to professionals.

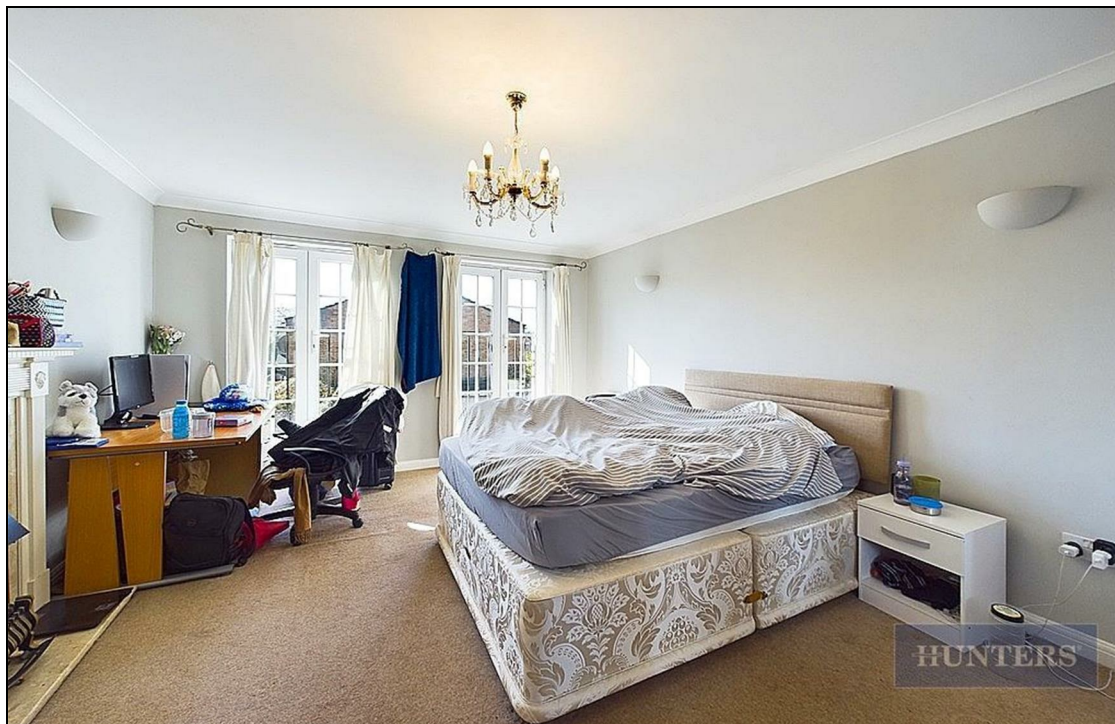
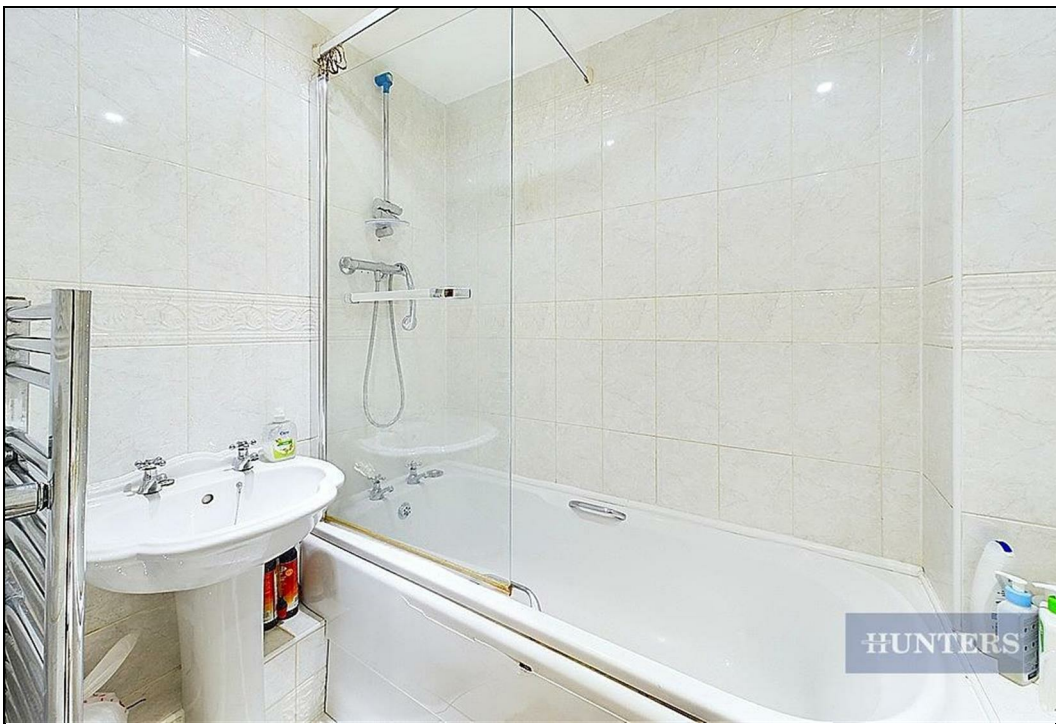
35 Bedford Place, Southampton, Hampshire, SO15 2DG | 02380 987720
southampton@hunters.com | www.hunters.com



KEY FEATURES

- Six bedroom licensed HMO
- Gross rent of £3,650pcm
- Low maintenance rear garden
 - Off Road Parking
- Three Bathrooms (1 bedroom has ensuite)
 - Utility room
- Excellent Location







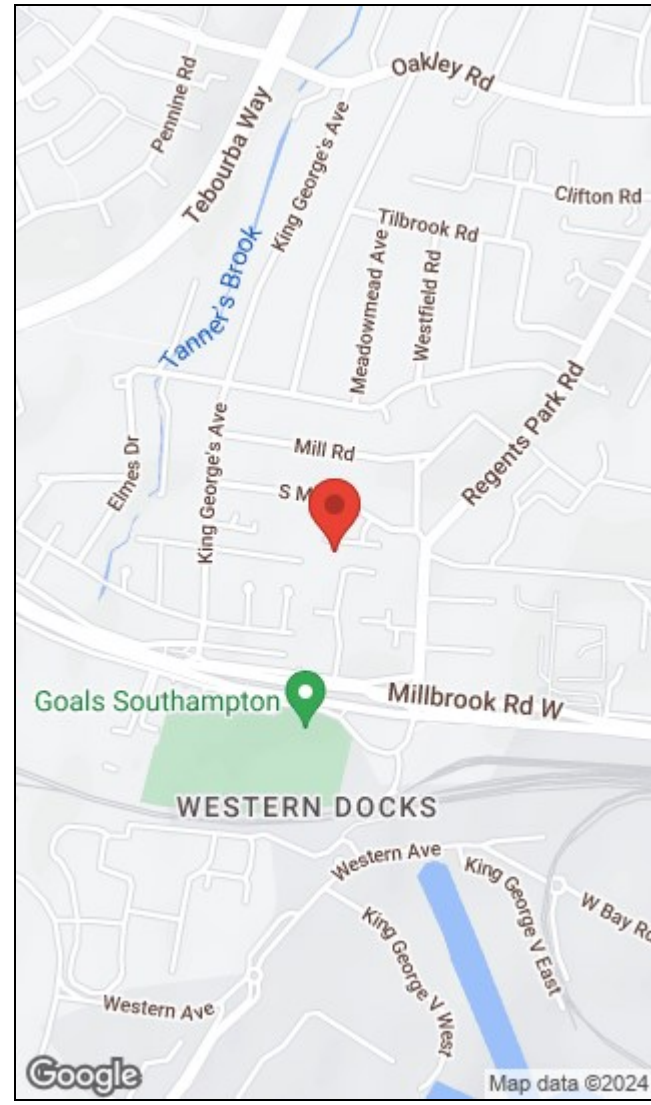
HUNTERS

Approximate total area⁽¹⁾
 137.78 m²
 1483.03 ft²

(1) Excluding balconies and terraces

While every attempt has been made to ensure accuracy, all measurements are approximate, not to scale. This floor plan is for illustrative purposes only.

GIRAFFE360



Energy Efficiency Rating	
Current	Potential
	86
72	

Environmental Impact (CO ₂) Rating	
Current	Potential
	A
B	

35 Bedford Place, Southampton, Hampshire, SO15 2DG | 02380 987720
 southampton@hunters.com | www.hunters.com



This Hunters business is independently owned and operated by Clegg Properties Ltd | Registered Address: Frenchfield, 23 Solent Avenue, Lymington, Hampshire, SO41 3SD | Registered Number: 6421594 England and Wales | VAT No: 188 0548 76 with the written consent of Hunters Franchising Limited.