
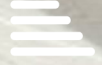




HUNTERS®
HERE TO GET *you* THERE

 2  2  1  B

Royal Crescent Apartments, SO14

Offers In Excess Of £250,000



GUIDE PRICE FROM £250,000 TO £260,000 Subject To Contract

Hunters are extremely pleased to offer this modern two bedroom apartment on the edge of Ocean Village, Southampton. Ideally located for the City Centre and local amenities of Ocean Village.

The property has a balcony and secure basement parking. Internally, the property benefits from two double bedrooms, ensuite and fitted wardrobes to the master bedroom, lounge, fully fitted kitchen with white goods and a family bathroom. The apartment has been finished to a very high standard.

This apartment has a tenant in-situ paying a rent of £1,150pcm.

The Royal Crescent Apartments was constructed in 2018 and is situated 0.7 miles away from the cosmopolitan City Centre. The Ocean Village Marina which is within close proximity, you will find convenience stores, restaurants, public house, beauty salon, excellent public walks and an impeccable five-star Harbour Hotel & Spa with a roof top cocktail bar and excellent dining experiences.

35 Bedford Place, Southampton, Hampshire, SO15 2DG | 02380 987720
southampton@hunters.com | www.hunters.com

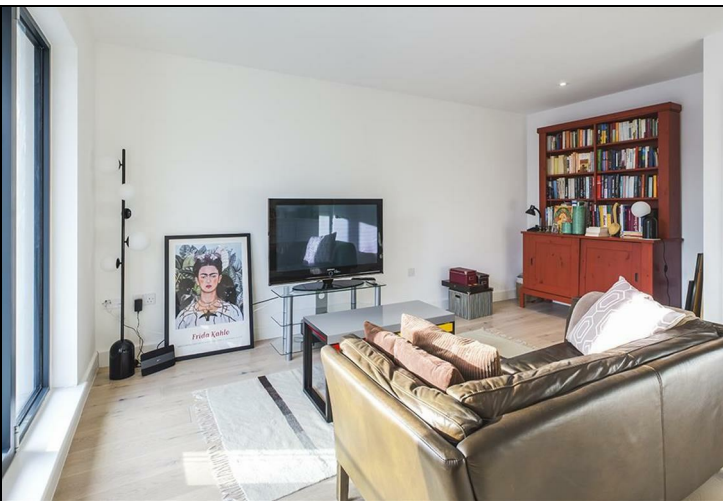


This Hunters business is independently owned and operated by Clegg Properties Ltd | Registered Address: Frenchfield, 23 Solent Avenue, Lymington, Hampshire, SO41 3SD | Registered Number: 6421594 England and Wales | VAT No: 188 0548 76 with the written consent of Hunters Franchising Limited.

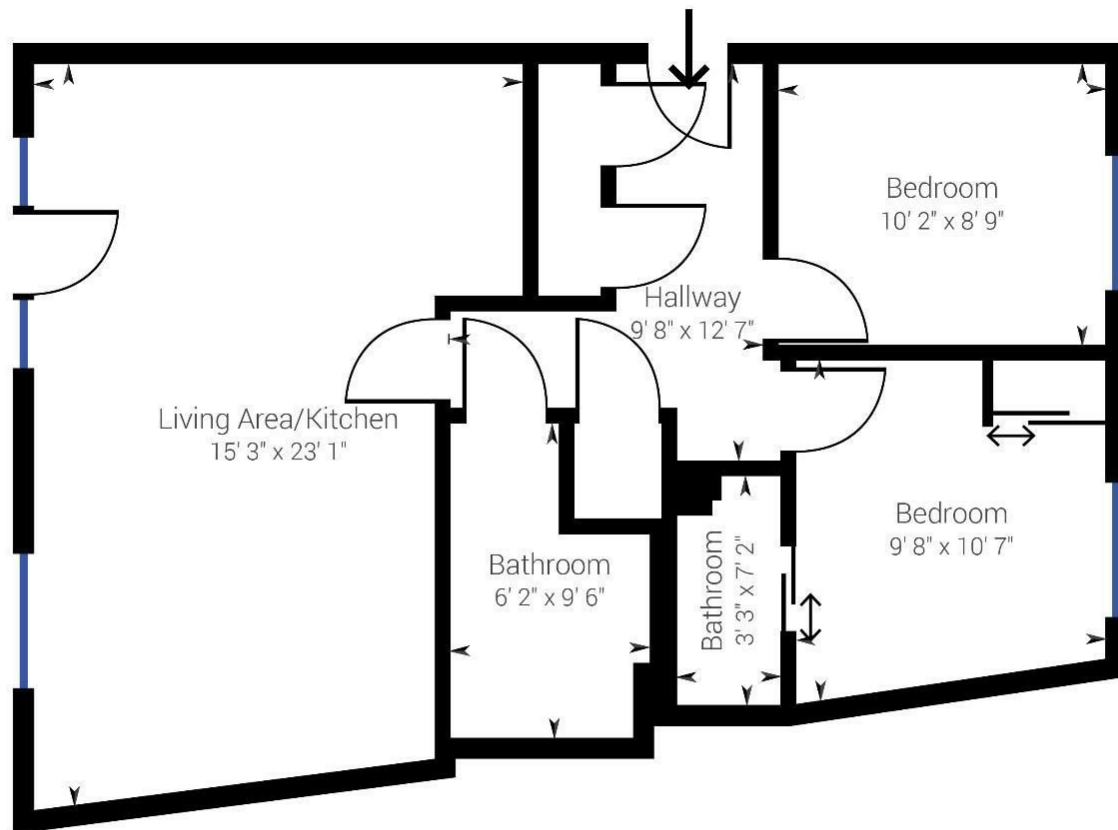


KEY FEATURES

- TWO DOUBLE BEDROOMS
- EN-SUITE TO MASTER BEDROOM
 - BALCONY
- SECURE PARKING
- LOCAL AMENITIES
- SECURE BLOCK ENTRY
- CENTRAL LOCATION
- WATERSIDE PROPERTY
- COUNCIL TAX BAND C
- GUIDE PRICE £250,000 TO £260,000



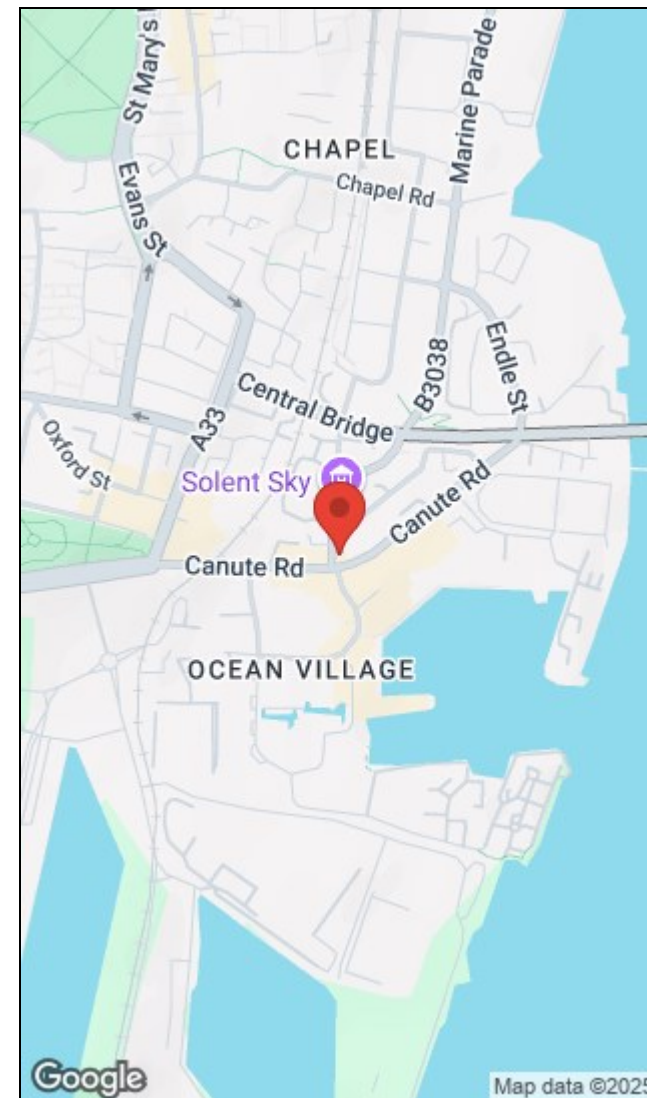




Approximate net internal area: 673.45 ft²

While every attempt has been made to ensure accuracy, all measurements are approximate, not to scale. This floor plan is for illustrative purpose only and should be used as such by any prospective tenant or purchaser.

Powered by Giraffe360



| Energy Efficiency Rating | | | Environmental Impact (CO ₂) Rating | | |
|---|-------------------------|-----------|---|-------------------------|-----------|
| | Current | Potential | | Current | Potential |
| Very energy efficient - lower running costs | | | Very environmentally friendly - lower CO ₂ emissions | | |
| (92 plus) A | | | (92 plus) A | | |
| (81-91) B | | | (81-91) B | | |
| (69-80) C | | | (69-80) C | | |
| (55-68) D | | | (55-68) D | | |
| (39-54) E | | | (39-54) E | | |
| (21-38) F | | | (21-38) F | | |
| (1-20) G | | | (1-20) G | | |
| Not energy efficient - higher running costs | | | Not environmentally friendly - higher CO ₂ emissions | | |
| England & Wales | EU Directive 2002/91/EC | | England & Wales | EU Directive 2002/91/EC | |

35 Bedford Place, Southampton, Hampshire, SO15 2DG | 02380 987720
southampton@hunters.com | www.hunters.com



This Hunters business is independently owned and operated by Clegg Properties Ltd | Registered Address: Frenchfield, 23 Solent Avenue, Lymington, Hampshire, SO41 3SD | Registered Number: 6421594 England and Wales | VAT No: 188 0548 76 with the written consent of Hunters Franchising Limited.