



Rockleigh Road, Southampton, Hampshire

Asking Price: £360,000 (Offers in Excess Of)



Rockleigh Road, Southampton, Hampshire

DESCRIPTION

A home full of charm and character, terraced family house positioned in a highly desirable location offering generous living space throughout.

This house on Rockleigh Road provides a homely feel, whilst sympathetically retaining period features.

The ground floor comprises a generous sized front room, with bay window and feature fireplace, dining room and a galley style kitchen with access to the utility area and double doors leading on to a large private rear garden.

On the upper floors, are the three bedrooms, two of which are double and the third is a generous sized single. The family bathroom comes fitted with white sanitaryware and double shower over the bath, tiled floor and tiling around the bath.

Further benefits include gas central heating throughout, double glazed and is offered to the market with no onward chain. It is truly a home not to be missed, for more information or to arrange a viewing, please contact Hunters Southampton on 02380 987720.





Energy Performance Certificate

The energy efficiency rating is a measure of the overall efficacy of a home. The higher the rating the more energy efficient the home is and the lower the fuel bills will be.

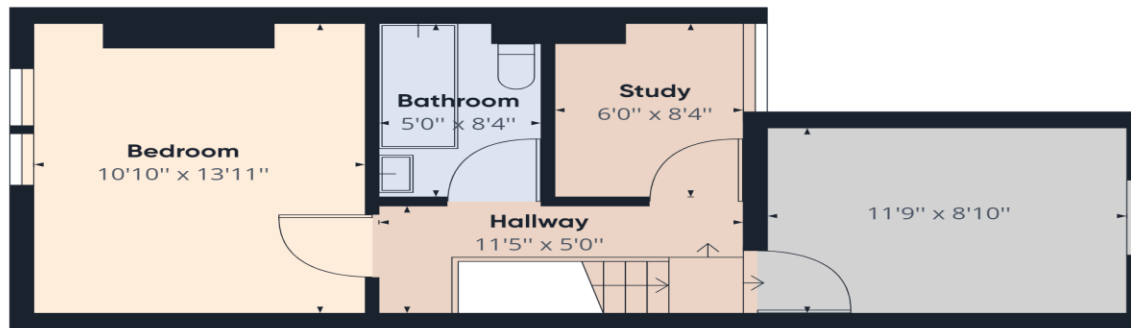
EpcUrl

DISCLAIMER

These particulars are intended to give a fair and reliable description of the property but no responsibility for any inaccuracy or error can be accepted and do not constitute an offer or contract. We have not tested any services or appliances (including central heating if fitted) referred to in these particulars and the purchasers are advised to satisfy themselves as to the working order and condition. If a property is unoccupied at any time there may be reconnection charges for any switched off/disconnected or drained services or appliances - All measurements are approximate.



Ground Floor Building 1



Floor 1 Building 1

Approximate total area⁽¹⁾
839.72 ft²

(1) Excluding balconies and terraces

While every attempt has been made to ensure accuracy, all measurements are approximate, not to scale. This floor plan is for illustrative purposes only.

GIRAFFE360

02380987720

35 Bedford Place,
Southampton, SO15 2DG

southampton@hunters.com

If you are thinking of selling your home or just curious to discover the value of your property, Hunters would be pleased to provide free, no obligation sales and marketing advice. Even if your home is outside the area covered by our local offices we can arrange a Market Appraisal through our national network of Hunters estate agents.

