

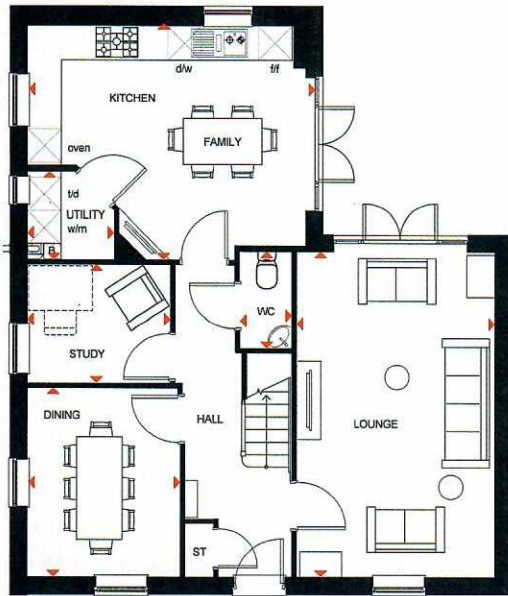
ALFRETON

4 BEDROOM DETACHED HOME



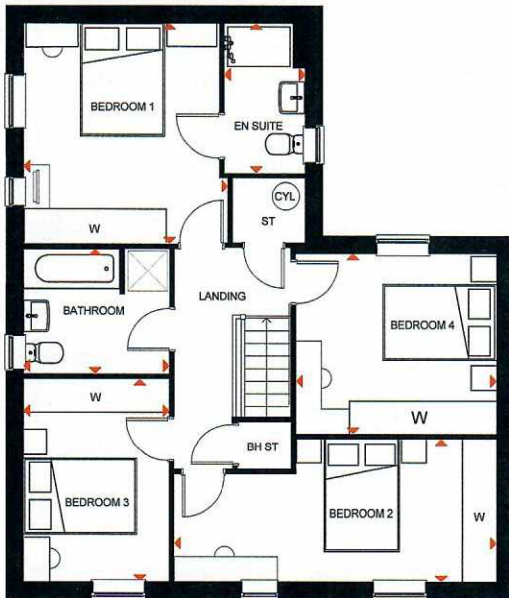
- This impressive family home provides an open-plan kitchen with French doors leading to the rear garden as well as a separate study
- The dual-aspect lounge also features French doors and is the ideal place for families to relax in
- The first floor features four double bedrooms, with the main bedroom including an en suite and the family bathroom





Ground Floor

Lounge	3475 mm x 5748 mm	11' 5" x 18' 10"
Kitchen/Family	4960 mm x 4133 mm	16' 3" x 13' 7"
Dining Room	2703 mm x 3324 mm	8' 10" x 10' 11"
Study	2579 mm x 2104 mm	8' 6" x 6' 11"
Utility	1600 mm x 1510 mm	5' 3" x 4' 11"
WC	866 mm x 1650 mm	2' 10" x 5' 5"



First Floor

Bedroom 1	3600 mm x 3851 mm	11' 10" x 12' 8"
En Suite	1425 mm x 2612 mm	4' 8" x 8' 7"
Bedroom 2	5666 mm x 2500 mm	18' 7" x 8' 2"
Bedroom 3	2581 mm x 3564 mm	8' 6" x 11' 8"
Bedroom 4	3537 mm x 3160 mm	11' 7" x 10' 4"
Bathroom	2581 mm x 2176 mm	8' 6" x 7' 2"

KEY	B Boiler	wm Washing machine space	td Tumble dryer space
	ST Store	f/f Fridge/freezer space	w Wardrobe space
	BH ST Bulhead store	dw Dishwasher	↔ Dimension location