

KINGSVILLE

THE CLASSIC
COLLECTION

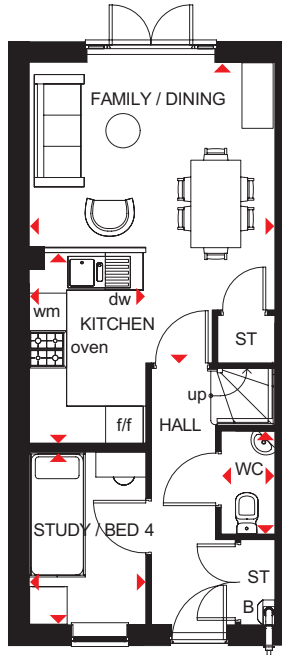
4 BEDROOM HOME



- An ideal family home designed over three floors
- A generous open-plan kitchen with dining and family areas, and a fourth bedroom/study are on the ground floor
- On the first floor, oversized windows fill the lounge and main bedroom with light, giving them a bright and airy feeling, and the bedroom has an en suite
- The second floor offers a further double bedroom, a single bedroom and a family bathroom



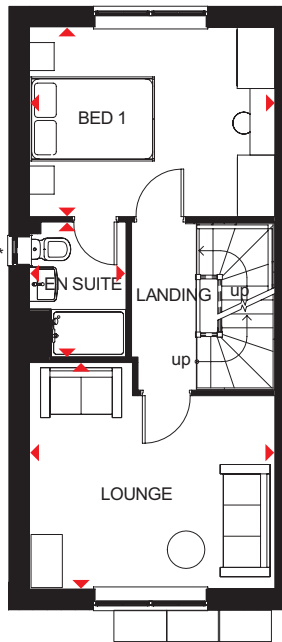
BARRATT
HOMES



Ground Floor

Family/Dining	3936 x 4820mm	12'11" x 15'10"
Kitchen	1866 x 3060mm	6'1" x 10'0"
Study/Bedroom 4	1866 x 2749mm	6'1" x 9'0"
WC	861 x 1649mm	2'10" x 5'5"

[Approximate dimensions]

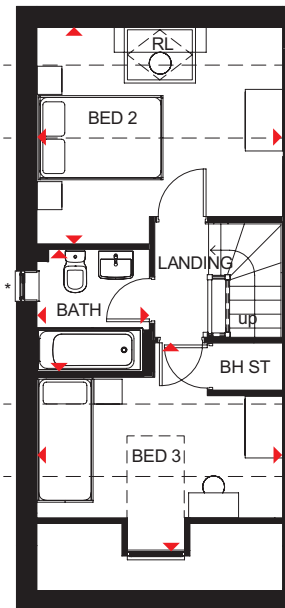


First Floor

Lounge	3936 x 3630mm	12'11" x 11'11"
Bedroom 1	3936 x 3042mm	12'11" x 10'0"
En Suite	1551 x 2163mm	5'1" x 7'1"

[Approximate dimensions]

* Window may be omitted on certain plots. Speak to a Sales Adviser for details on individual plots.



Second Floor

Bedroom 2	3936 x 3508mm	12'11" x 11'6"
Bedroom 3	3936 x 3325mm	12'11" x 10'11"
Bathroom	1761 x 1963mm	5'9" x 6'5"

[Approximate dimensions]

* Window may be omitted on certain plots. Speak to a Sales Adviser for details on individual plots.

† Overall floor dimension includes lower ceiling areas.

KEY	B	Boiler	wm	Washing machine space	RL	Roof light
	ST	Store	f/f	Fridge/freezer space	◀▶	Dimension location
	BH ST	Bulkhead Store	dw	Dishwasher space		

barratthomes.co.uk

