

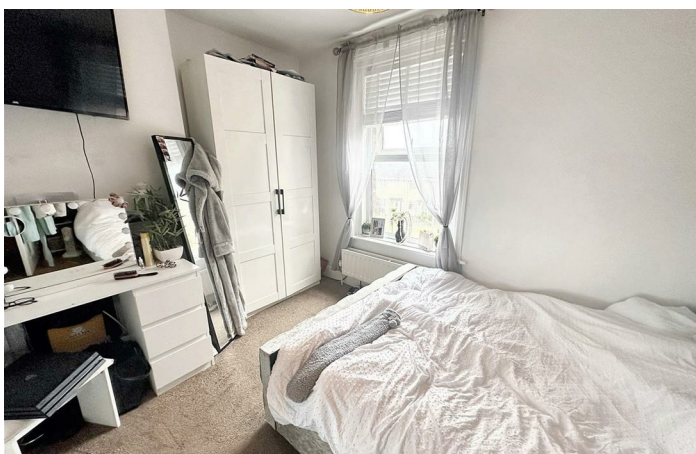


Grove Road , Portland DT5 1DB

- Character, End Terrace Property
 - Two Reception Rooms
 - Utility Room
- Gas Central Heating & Double Glazing
 - Distant Sea Views
- Four Double Bedrooms
 - Modern Fitted Kitchen
- First Floor Shower Room, En-Suite Shower Room & Ground Floor Cloakroom
- Low Maintenance Rear Garden
 - No Onward Chain

Offers In Excess Of £260,000 Freehold





Location

GROUND FLOOR

Entrance Porch

3'11" x 7'9"

Entrance Hallway

Additional Reception Room

12'6" x 14'6"

Lounge

17'3" max x 13'5" max (max x maxc)

Kitchen

10'6" x 12'0"

Utility Room

2'10" x 4'7"

Ground Floor WC

6'6" x 4'9"

FIRST FLOOR

First Floor Landing

Bedroom Two

10'4" x 14'4"

Bedroom Three

10'11" x 12'3"

Bedroom Four

11'4" x 8'8"

Shower Room

11'5" max x 4'6" max (max x max)

Wardrobe

7'2" max x 10'9" max

SECOND FLOOR

Bedroom One

15'6" x 13'5"

En Suite

5'10" x 6'11"

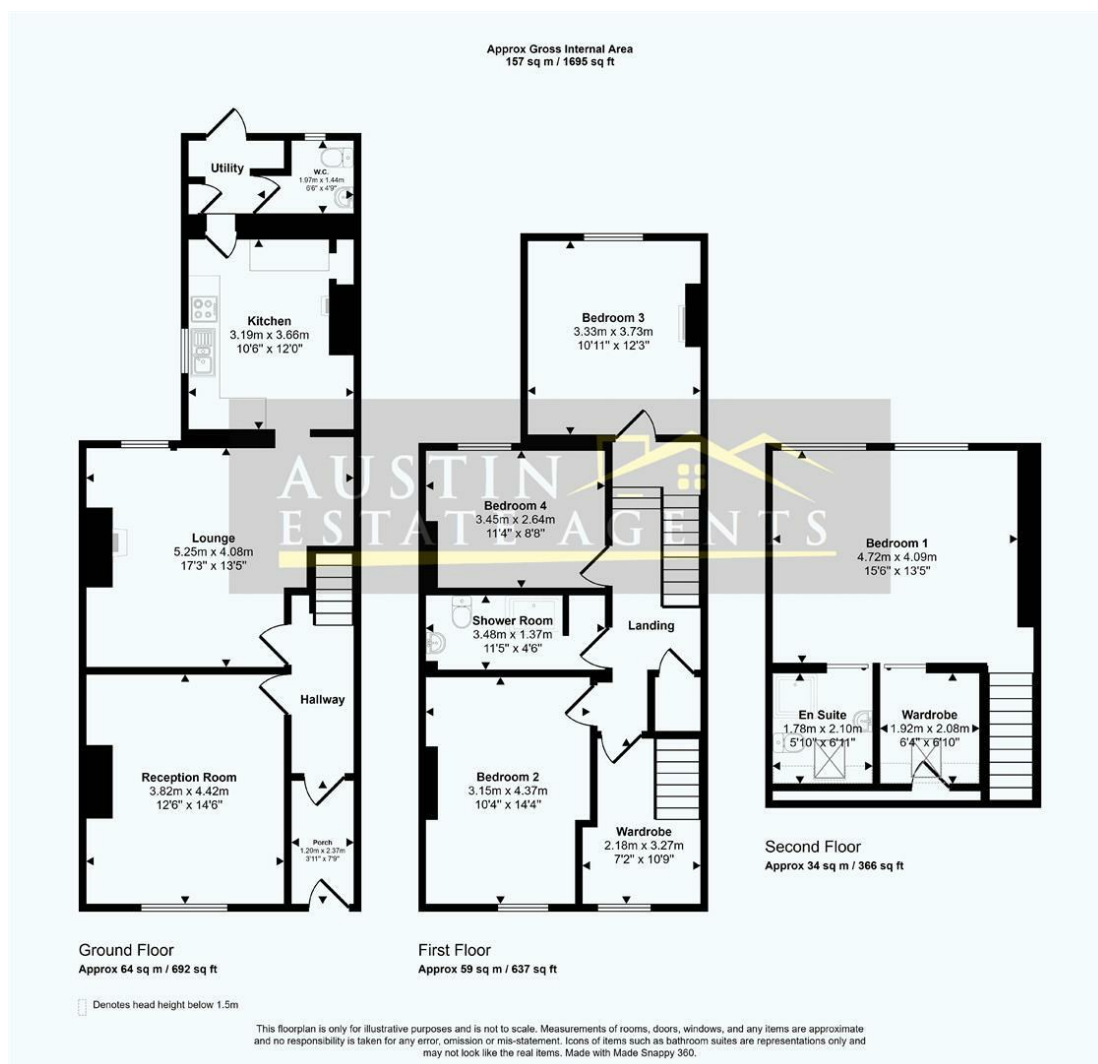
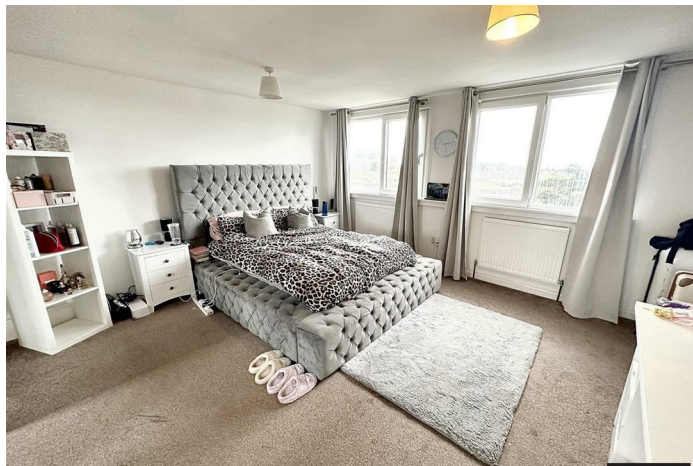
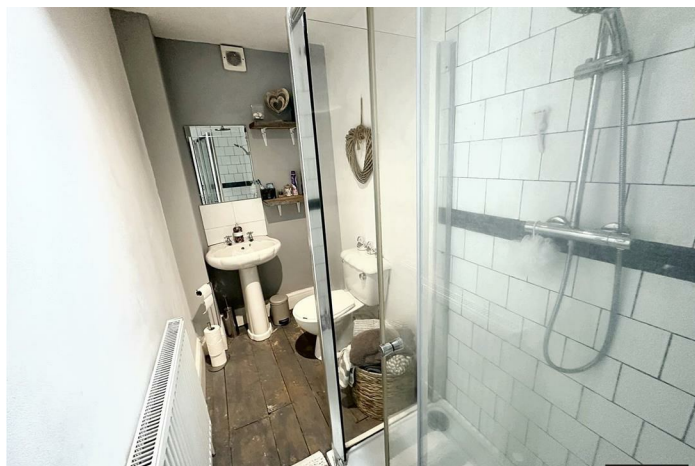
OUTSIDE

Rear Garden

Wardrobe
6'4" x 6'10"



Local Authority
Council Tax Band B
EPC Rating E



Weymouth Office

115 Dorchester Road, Weymouth,
Dorset, DT4 7JY

Contact

01305 858470
info@austinpropertyservices.co.uk
austinpropertyservices.co.uk

Agents Note: Whilst every care has been taken to prepare these particulars, they are for guidance purposes only. All measurements are approximate and for general guidance purposes only and whilst every care has been taken to ensure accuracy, they should not be relied upon and potential buyers/tenants are advised to recheck the measurements.