



Southdown Road , Weymouth DT4 9LJ

- Semi Detached Family Home
 - Light & Airy Lounge
 - Modern Shower Room
 - Front Driveway
- Sought After Rodwell Location
- Three Bedrooms
 - Contemporary Kitchen / Diner
 - Double Glazing & Gas Central Heating
- Low Maintenance Rear Garden with Summerhouse
- No Onward Chain

Offers In Excess Of £320,000 Freehold





Location

GROUND FLOOR

Entrance Hallway

Lounge

Kitchen / Diner

17'7" max x 12'5" max (max x max)

FIRST FLOOR

First Floor Landing

Bedroom One

Bedroom Two

11'5" x 11'7"

Bedroom Three

6'0" x 7'11"

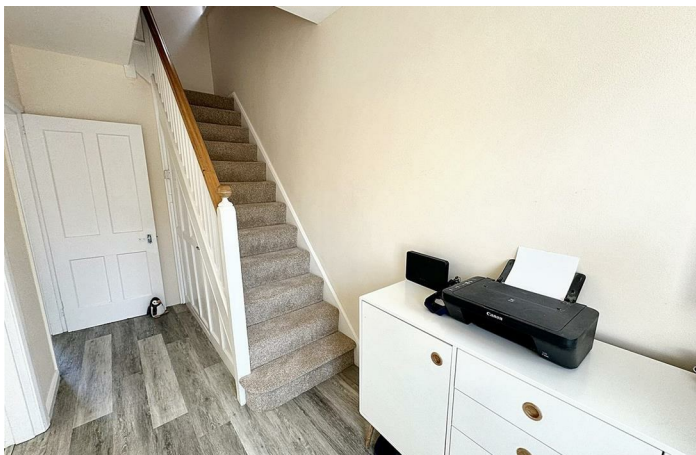
Shower Room

5'10" x 5'11"

OUTSIDE

Front Driveway

Rear Garden

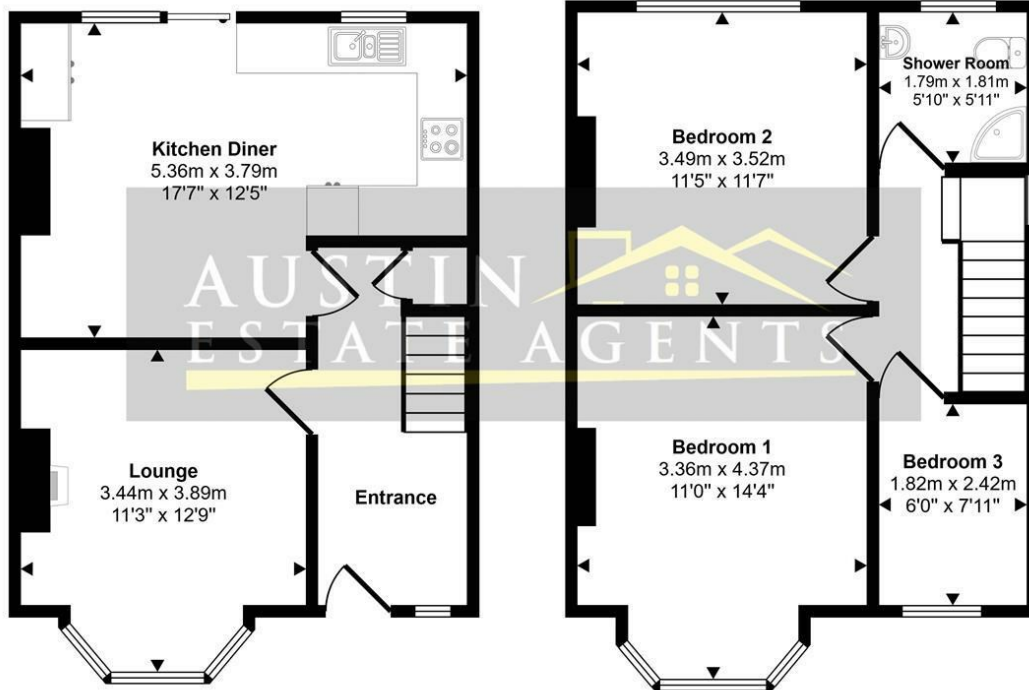




Local Authority
Council Tax Band C
EPC Rating C



Approx Gross Internal Area
79 sq m / 854 sq ft



Ground Floor
Approx 39 sq m / 422 sq ft

First Floor
Approx 40 sq m / 432 sq ft

This floorplan is only for illustrative purposes and is not to scale. Measurements of rooms, doors, windows, and any items are approximate and no responsibility is taken for any error, omission or mis-statement. Icons of items such as bathroom suites are representations only and may not look like the real items. Made with Made Snappy 360.

Weymouth Office

115 Dorchester Road, Weymouth,
Dorset, DT4 7JY

Contact

01305 858470
info@austinpropertyservices.co.uk
austinpropertyservices.co.uk

Agents Note: Whilst every care has been taken to prepare these particulars, they are for guidance purposes only. All measurements are approximate and for general guidance purposes only and whilst every care has been taken to ensure accuracy, they should not be relied upon and potential buyers/tenants are advised to recheck the measurements.