



Pauls Way

Crossways, Dorchester DT2 8UP

- Exceptional Family Residence
 - Lounge & Dining Room
- Contemporary Kitchen / Diner & Separate Utility Room
- Four Double Bedrooms
- Sunny Conservatory
- Family Bathroom, En Suite Shower Room & Ground Floor Cloakroom
- Double Glazing & Gas Central Heating
- Attractive Gardens to the Front & Rear
- Block Paved Driveway & Double Garage
- Sought After Crossways Location

Asking Price £440,000 Freehold





Location

GROUND FLOOR

Entrance Porch

Reception Hallway

Lounge

19'0" x 11'7"

Conservatory

9'6" x 11'0"

Dining Room

12'3" x 9'8"

Kitchen / Diner

19'0" max x 9'4" max (max x max)

Utility Room

4'6" x 8'5"

WC

FIRST FLOOR

First Floor Landing

Bedroom One

12'6" x 11'6"

En Suite Shower Room

6'11" x 4'6"

Bedroom Two

9'1" x 11'9"

Bedroom Three

11'9" x 8'3"

Bedroom Four

9'1" x 8'3"

Bathroom

6'0" x 6'10"

OUTSIDE

Front Garden & Driveway

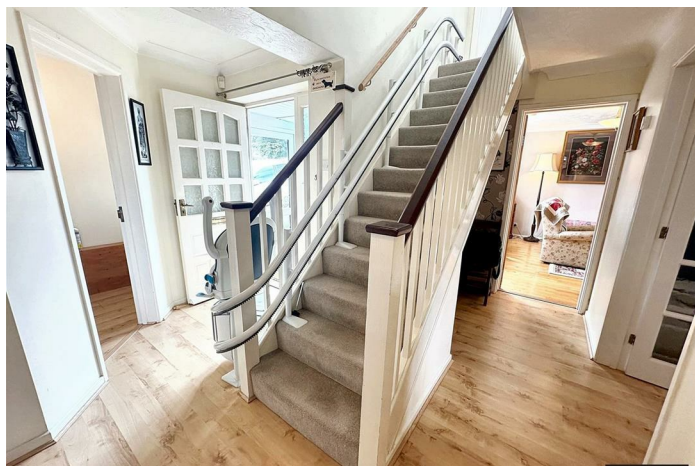
Garage

20'1" max x 15'11" max (max x max)

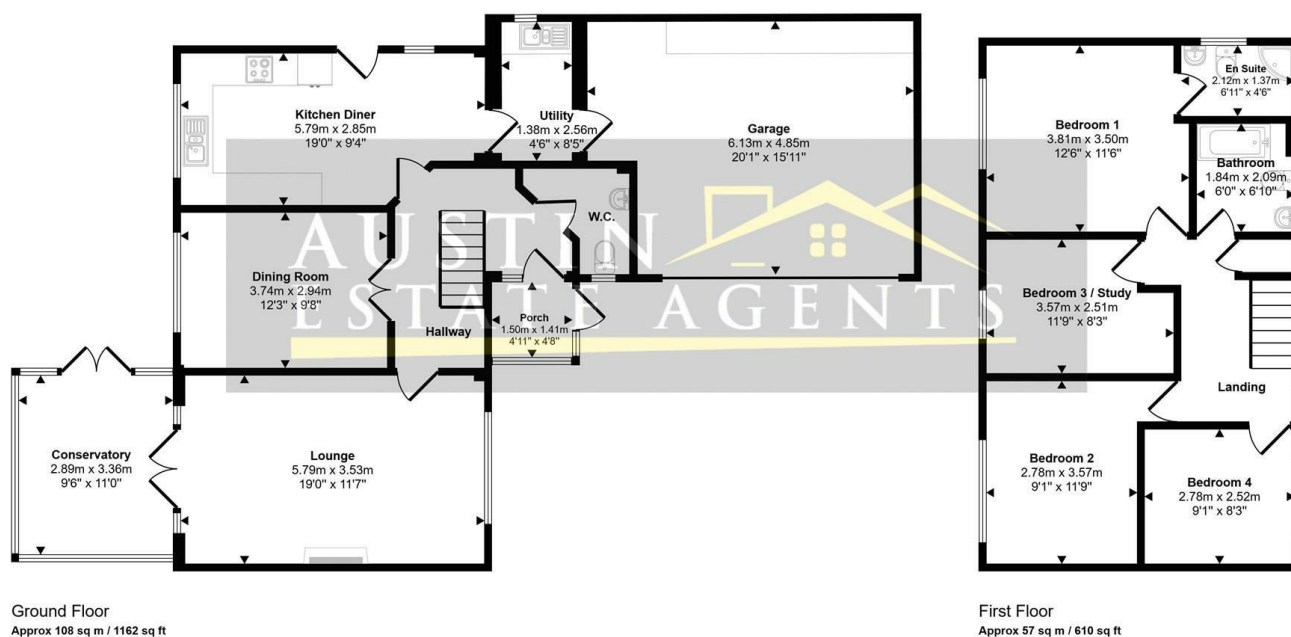
Rear Garden



Local Authority
Council Tax Band E
EPC Rating B



Approx Gross Internal Area
165 sq m / 1772 sq ft



This floorplan is only for illustrative purposes and is not to scale. Measurements of rooms, doors, windows, and any items are approximate and no responsibility is taken for any error, omission or mis-statement. Icons of items such as bathroom suites are representations only and may not look like the real items. Made with Made Snappy 360.

Weymouth Office

115 Dorchester Road, Weymouth,
Dorset, DT4 7JY

Contact

01305 858470
info@austinpropertyservices.co.uk
austinpropertyservices.co.uk

Agents Note: Whilst every care has been taken to prepare these particulars, they are for guidance purposes only. All measurements are approximate and for general guidance purposes only and whilst every care has been taken to ensure accuracy, they should not be relied upon and potential buyers/tenants are advised to recheck the measurements.