

AUSTIN
ESTATE AGENTS



Dorchester Road , Weymouth DT4 7JY

- Substantial Grade II Terraced Home
- Set out as Five Separate Apartments
- Gravelled Communal Front Garden
 - Off Road Parking
- Walking Distance of Greenhill Beach & Gardens
- Excellent Investment Opportunity
- Three Studio Apartments & Two One Bedroom Apartments
 - Communal Bin Area
- Close to Shops & Amenities at Lodmoor Hill
 - No Onward Chain

Asking Price £389,000 Freehold





Location

FLAT A

Third Floor Studio

Open Plan Lounge / Bedroom / Kitchen

Bathroom

FLAT B

Second Floor Studio

Lounge / Bedroom

16'9" x 12'8"

Kitchen

11'4" x 5'5"

Shower Room

FLAT C

First Floor Studio

Lounge / Bedroom

16'8" x 12'8"

Kitchen

14'4" x 5'9"

Shower Room.

FLAT D

Ground Floor One Bedroom Apartment

Hallway

Lounge

12'7" x 12'4"

Kitchen

8'2" x 6'7"

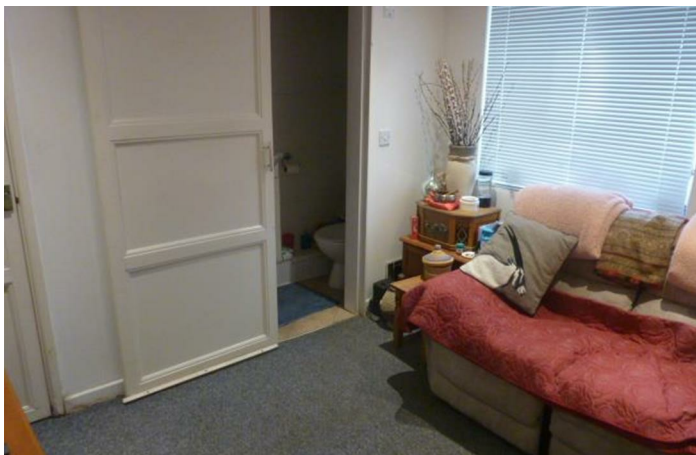
Bedroom

11'1" x 11'0"

WC

FLAT E

Basement Flat



Lounge
10'5" x 7'7"

Kitchen
13'3" x 6'8"

Bedroom
12'9" x 11'8"

Shower Room..

Private Enclosed Rear Courtyard

OUTSIDE

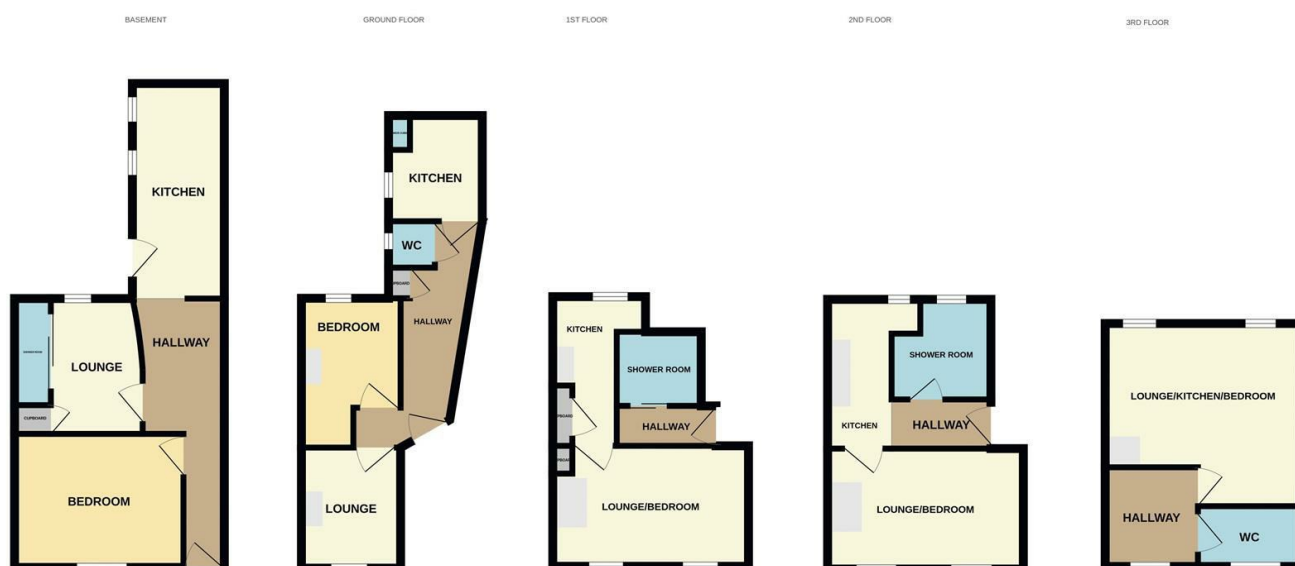
Front Garden

Communal Bin Area

Off Road Parking



Local Authority
Council Tax Band **A**
EPC Rating **C**



Whilst every attempt has been made to ensure the accuracy of the floorplan contained here, measurements of doors, windows, rooms and any other items are approximate and no responsibility is taken for any error, omission or mis-statement. This plan is for illustrative purposes only and should be used as such by any prospective purchaser. The services, systems and appliances shown have not been tested and no guarantee as to their operability or efficiency can be given.
Made with Metropix ©2025

Weymouth Office

115 Dorchester Road, Weymouth,
Dorset, DT4 7JY

Contact

01305 858470
info@austinpropertyservices.co.uk
austinpropertyservices.co.uk

Agents Note: Whilst every care has been taken to prepare these particulars, they are for guidance purposes only. All measurements are approximate and for general guidance purposes only and whilst every care has been taken to ensure accuracy, they should not be relied upon and potential buyers/tenants are advised to recheck the measurements.