



1a Bingleaves Road , Weymouth DT4 8RP

- Purpose Built Apartment
- Light & Airy Lounge with Two Juliet Balconies
- En-Suite Shower Room & Main Bathroom
- Communal Gardens
- Share of Freehold with Long Lease
- Two Double Bedrooms
- Modern Fitted Kitchen / Diner
- Mainly Triple Glazed with Gas Central Heating
- Allocated Parking via Carport
- No Onward Chain

Price Guide £230,000 Share of Freehold





Location

APARTMENT

Hallway

Lounge

14'7" x 12'6"

Kitchen / Diner

11'7" max x 12'4" max (max x max)

Bedroom One

9'1" max x 15'5" max (max x max)

En-Suite Shower Room

5'10" x 4'11"

Bedroom Two

13'1" max x 14'1" max (max x max)

Bathroom

5'10" x 8'6"

OUTSIDE

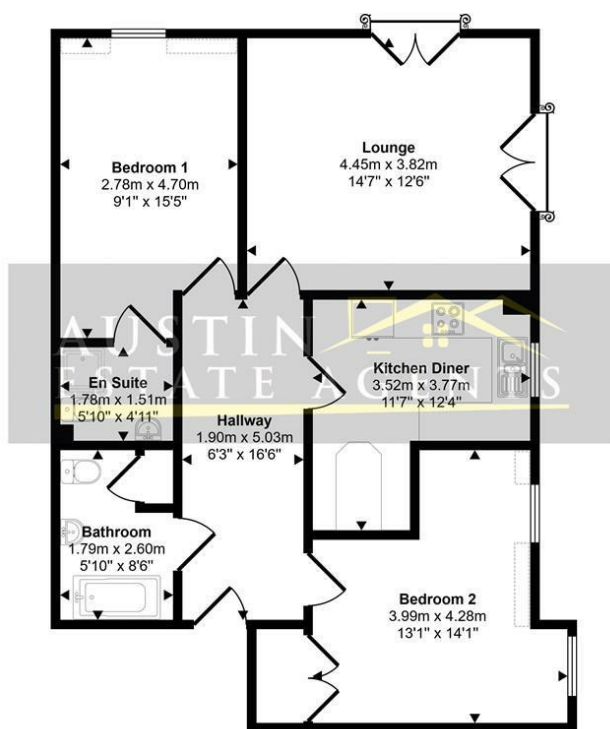
Allocated Parking



Local Authority
Council Tax Band C
EPC Rating B



Approx Gross Internal Area
76 sq m / 814 sq ft



Floorplan

Denotes head height below 1.5m

This floorplan is only for illustrative purposes and is not to scale. Measurements of rooms, doors, windows, and any items are approximate and no responsibility is taken for any error, omission or mis-statement. Icons of items such as bathroom suites are representations only and may not look like the real items. Made with Made Snappy 360.

Weymouth Office

115 Dorchester Road, Weymouth,
Dorset, DT4 7JY

Contact

01305 858470
info@austinpropertyservices.co.uk
austinpropertyservices.co.uk

Agents Note: Whilst every care has been taken to prepare these particulars, they are for guidance purposes only. All measurements are approximate and for general guidance purposes only and whilst every care has been taken to ensure accuracy, they should not be relied upon and potential buyers/tenants are advised to recheck the measurements.