



Asking Price £395,000

Orchard House Hardwick Bank Road, Tewkesbury, GL20 8HQ

- CHAIN FREE
- DETACHED
- 5 BEDROOMS
- INDIVIDUALLY BUILT
- CONSERVATORY
- LARGE GARAGE AND WORKSHOP

17 KESTREL COURT, WATERWELLS DRIVE, QUEDGELEY GL2 2AT

E: info@glos-property.co.uk | **GLouceSTER:** 01452 835736 | **ChELTEnHAM:** 01242 644202 | **STROUD:** 01453 383004

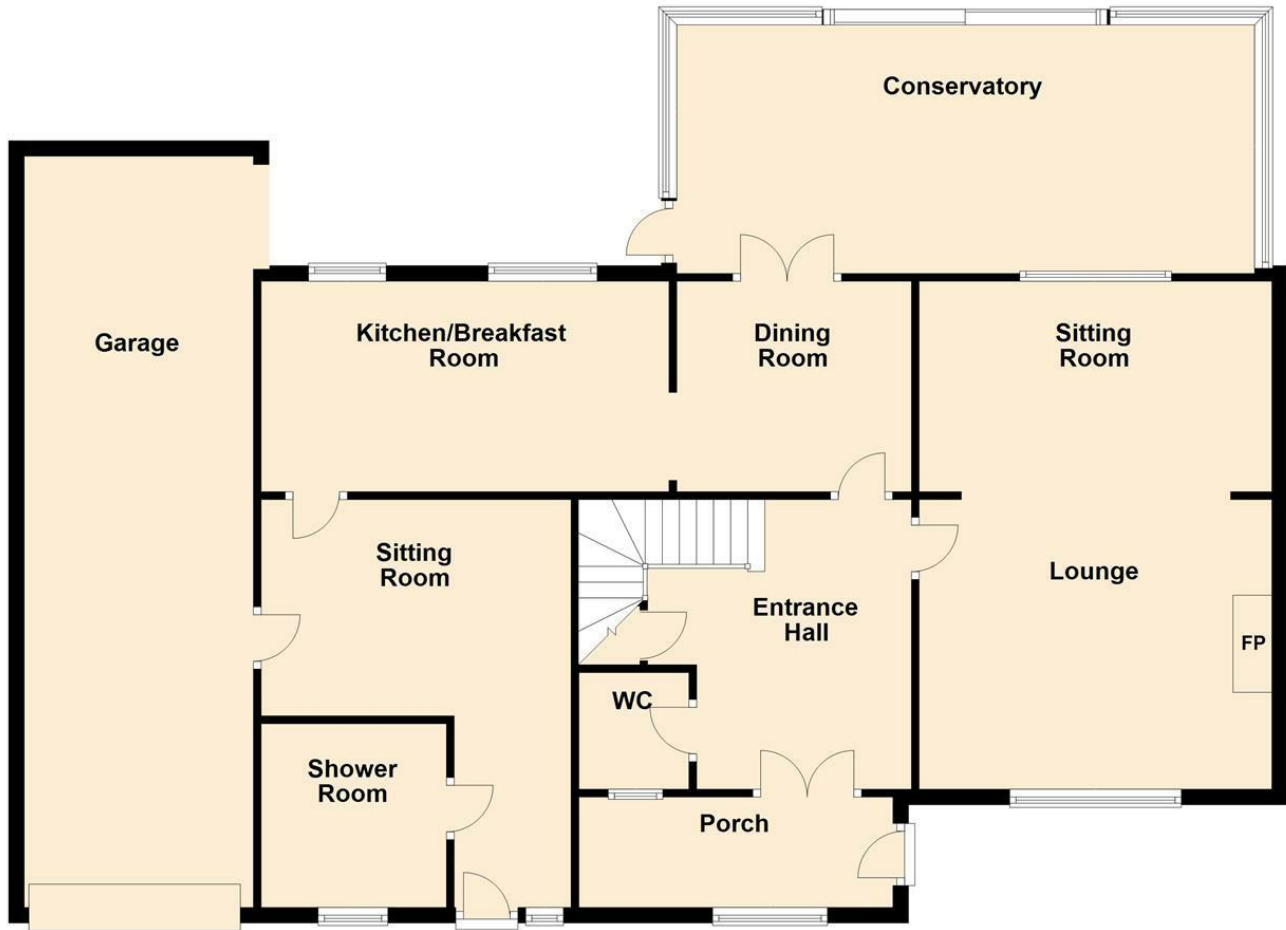


CHAIN FREE! A very large 5 bedroom detached property located in Northway. This spacious home comprises porch, entrance hall, cloakroom, 21' sitting room, dining room, 21' conservatory, 17' kitchen (which is only a year old), family room, wet room, 5 bedrooms and a bathroom. Outside there is a rear garden with established fruit trees and a 32' garage and a 23' workshop as well as a block paved driveway with parking for 4 cars. This impressive home would suit anyone looking for space and could converted to create an annexe or self contained area.



Ground Floor

Approx. 151.3 sq. metres (1628.5 sq. feet)



Total area: approx. 241.6 sq. metres (2600.4 sq. feet)

This floorplan is for illustrative purposes only and is not to scale. Where measurements are shown they are approximate and should not be relied on. No liability is accepted in respect of any consequential loss arising from the use of this plan
Plan produced using PlanUp.



Entrance porch

UPVC double glazed window to front, door to -

Entrance hall

Stairs to 1st floor, radiator, door to -

Cloakroom

Window to front, vanity wash basin, wc, radiator.

Sitting room

21'7 x 15'

UPVC double glazed window to front and rear, two radiators, gas fire with ornamental surround.

Dining room

9'10 x 9'10

UPVC double glazed doors to rear, radiator, door to -

Conservatory

21'1 x 11'

Doors to garden.

Kitchen

17'2 x 10'

UPVC double glazed window to rear, range of matching wall and base units, sink and drainer, built in dish washer, gas hob, electric oven, space for fridge freezer, radiator, door to -

Family room

15'6 x 16'

UPVC double glazed to front and door, door to -

Wet room

UPVC double glazed window to front, wc, wash basin and shower.

Garage

9'8 x 32'

Workshop / extension of garage

11'10 x 23'

1st floor landing

UPVC double glazed window to front, door to -

Bedroom 1

13'2 x 15'

UPVC double glazed window to rear, radiator.

Bedroom 2

8' x 14'10

UPVC double glazed window to front, radiator.

Bedroom 3

9'11 x 14'7

UPVC double glazed window to rear, radiator, built in wardrobe.

Bedroom 4

9'10 x 9'6

UPVC double glazed window to rear, radiator, built in wardrobe.

Bedroom 5

5'2 x 15'9

UPVC double glazed window to front.

Bathroom

UPVC double glazed window to side, pedestal wash basin, heated towel rail, shower and bath.

WC

UPVC double glazed window to side, wash basin and wc.

Garden

Fenced and enclosed. Mostly laid to lawn with patio area and vegetable plot area. Covered storage area, summerhouse and shed.

Driveway

Block paved driveway with ample parking.

