

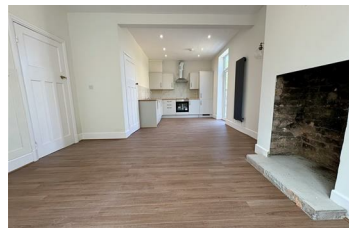


Wolverhampton Road East, Wolverhampton WV4 6AP

£1,600 Per Month



A beautifully refurbished detached property, positioned in the favourable location, offering excellent access into Wolverhampton City Centre, public transport links and a large selection of local amenities. The property is set behind gates and offers driveway parking to the front and private garden to the rear. Internally there is a large, modern family kitchen room, spacious living room, utility and W/C to the ground floor. The first-floor boasts three double bedrooms and a contemporary bathroom suite with separate shower cubicle and free-standing bath. A payment of one weeks rent is to be paid upon acceptance of applying for the property and a security deposit of £1846.00 is payable upon completion. Available







Wolverhampton Road East, Wolverhampton WV4 6AP

£1,600 Per Month



now on an unfurnished basis. (EPC: D) (Council Tax Band D). All material information is readily available from the Agent or via the listing for this property on Rightmove or OnTheMarket.

