

# BERRIMAN EATON



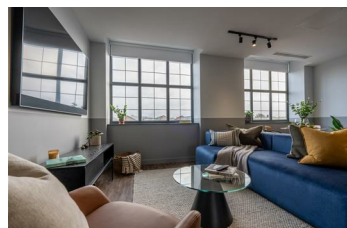
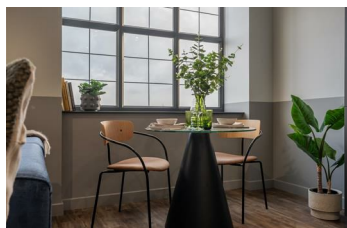
Paul Street, Wolverhampton WV2 4DH

£1,000 Per Month



Introducing Sunbeam Apartments, where elegance meets comfort for a truly luxurious living experience. Each apartment is equipped with top-of-the-line amenities to ensure a modern and lavish living experience.

A range of studios, one-bedrooms, and two-bedroom apartments, designed to offer modern living at its finest. Each residence at Sunbeam Apartments boasts stylish interiors and state-of-the-art amenities, ensuring a superior standard of comfort and convenience.



13-15 High Street, Tettenhall, Wolverhampton, WV6 8QS  
Tel: 01902 749974 Email: [lettings@berrimaneaton.co.uk](mailto:lettings@berrimaneaton.co.uk) [berrimaneaton.co.uk](http://berrimaneaton.co.uk)

# BERRIMAN EATON



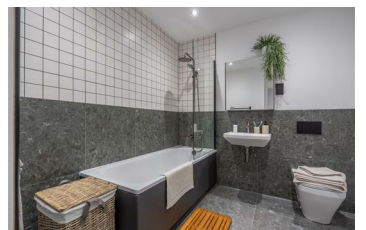
Paul Street, Wolverhampton WV2 4DH

£1,000 Per Month



Each apartment will benefit from:

- Air conditioning for optimal comfort.
- A 55" Sky Glass TV with Sky's Ultimate Package for entertainment.
- Beds ranging from Double to Super King size, depending on bedroom size, accompanied by high-quality mattresses.
- Comfortable seating options, including sofas or chaise sofas.



13-15 High Street, Tettenhall, Wolverhampton, WV6 8QS  
Tel: 01902 749974 Email: [lettings@berrimaneaton.co.uk](mailto:lettings@berrimaneaton.co.uk) [berrimaneaton.co.uk](http://berrimaneaton.co.uk)



# BERRIMAN EATON



Paul Street, Wolverhampton WV2 4DH

£1,000 Per Month



- Dining areas with tables and chairs for gatherings.
- High-quality flooring and rugs in lounge and bedrooms for added elegance.
- Well-appointed kitchens featuring stone worktops, premium units and drawers with slow closing mechanisms, oven and hob, washer dryer, and fridge freezer.

Additionally, residents will have exclusive access to various amenities, including:



13-15 High Street, Tettenhall, Wolverhampton, WV6 8QS  
Tel: 01902 749974 Email: [lettings@berrimaneaton.co.uk](mailto:lettings@berrimaneaton.co.uk) [berrimaneaton.co.uk](http://berrimaneaton.co.uk)

# BERRIMAN EATON

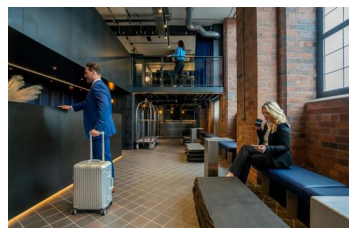


Paul Street, Wolverhampton WV2 4DH

£1,000 Per Month



- A fully-equipped gymnasium for fitness enthusiasts.
- Co-working rooms and lounge areas for remote work or relaxation.
- A barista bar to enjoy premium coffee.
- Landscaped gardens to unwind and enjoy nature.
- Access to the Paragon app for convenient management of services and facilities.



13-15 High Street, Tettenhall, Wolverhampton, WV6 8QS  
Tel: 01902 749974 Email: [lettings@berrimaneaton.co.uk](mailto:lettings@berrimaneaton.co.uk) [berrimaneaton.co.uk](http://berrimaneaton.co.uk)



# BERRIMAN EATON

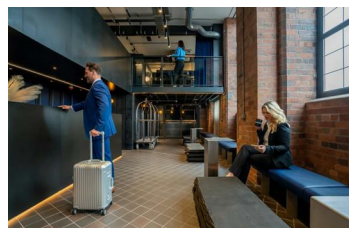
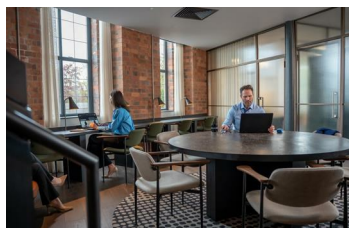


Paul Street, Wolverhampton WV2 4DH

£1,000 Per Month



For further details or to express interest please contact our Lettings Department on 01902 749974 or [lettings@berrimaneaton.co.uk](mailto:lettings@berrimaneaton.co.uk)



13-15 High Street, Tettenhall, Wolverhampton, WV6 8QS  
Tel: 01902 749974 Email: [lettings@berrimaneaton.co.uk](mailto:lettings@berrimaneaton.co.uk) [berrimaneaton.co.uk](http://berrimaneaton.co.uk)