

# BERRIMAN EATON

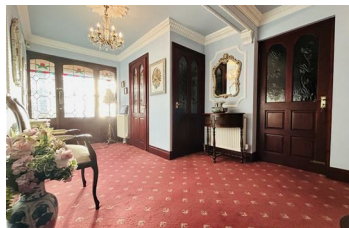


Gospel End Road, Dudley DY3 3YT

£1,595 Per Month



An exceptionally spacious detached family home, situated in a highly coveted location. On the ground floor, the property boasts an inviting entrance hallway, a generously sized open-plan living room and sitting area, a family kitchen with an adjoining dining space, a spacious ground floor office, and a convenient cloakroom. The first floor presents four sizable double bedrooms, including an ensuite shower room and the principal bathroom. Each bedroom is well-appointed with abundant wardrobe and storage space. Outside, there is plentiful driveway parking, an expansive frontage, a private rear garden, and a garage. Available from middle of May, for a minimum 12 month tenancy, fully furnished. A payment of one weeks rent is to be paid upon acceptance of applying for the property. (EPC .D) (Council Tax Band. F).



13-15 High Street, Tettenhall, Wolverhampton, WV6 8QS  
Tel: 01902 749974 Email: [lettings@berrimaneaton.co.uk](mailto:lettings@berrimaneaton.co.uk) [berrimaneaton.co.uk](http://berrimaneaton.co.uk)