

BERRIMAN EATON

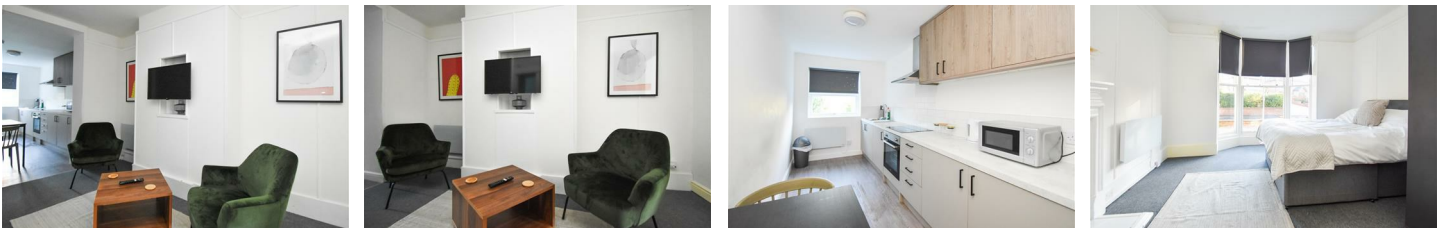


226 Penn Road, Wolverhampton WV4 4AA

£850 Per Month



A two bedroom ground floor apartment to rent in close proximity to Wolverhampton City Centre with parking to rear. In brief the property benefits from an open plan living room and kitchen, two good sized double bedrooms and bathroom. The development benefits from rear parking. A payment of one weeks rent is to be paid upon acceptance of applying for the property. Available now Furnished. (EPC: TBC) (Council Tax Band. A) A Security deposit of £980.00 is payable upon completion



13-15 High Street, Tettenhall, Wolverhampton, WV6 8QS
Tel: 01902 749974 Email: lettings@berrimaneaton.co.uk berrimaneaton.co.uk