

BERRIMAN EATON

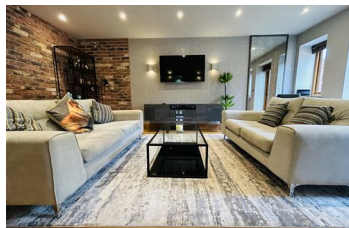


Trysull House Mews, Trysull WV5 7JF

£1,250 Per Month



A beautifully presented two bedroom barn conversion, positioned in the heart of this highly sought after South Staffordshire Village. Swallow barn offers contemporary living throughout and consists of a spacious entrance hallway, modern fitted dining kitchen, with steps leading to the large living room which benefits from French doors opening to the rear courtyard. To the first floor there are two double bedrooms, both with adjoining ensuite bathrooms and complete with fitted wardrobes. Externally there is parking for 2- cars and a private courtyard. Available fully furnished. A payment of one weeks rent is to be paid upon acceptance of applying for the property. (EPC.TBC) (Council Tax Band D)



13-15 High Street, Tettenhall, Wolverhampton, WV6 8QS
Tel: 01902 749974 Email: lettings@berrimaneaton.co.uk berrimaneaton.co.uk