

# BERRIMAN EATON

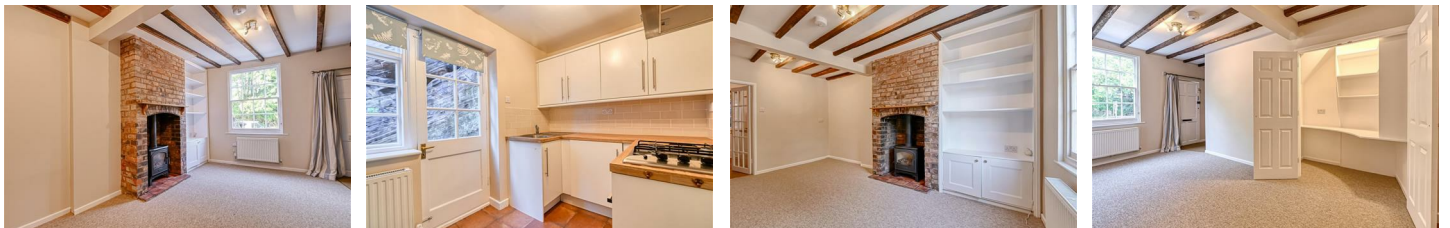


Ebenezer Row, Bridgnorth WV16 4AU

£825 Per Month



A beautifully presented two bedroom terrace cottage with a small private courtyard to the rear. Positioned at the foot of Ebenezers Row this most convenient location gives access on foot to the towns excellent amenities and the vintage Severn Valley Steam Railway. Internally the accommodation comprises a lounge with gas fire, small study area and a fitted kitchen to include an oven, gas hob, washing machine, fridge and freezer. To the first floor and two double bedrooms and a modern bathroom with shower over the bath. Available now, unfurnished. A Security deposit of £951.00 is payable upon completion. A payment of one weeks rent is to be paid upon acceptance of applying for the property. (EPD: D). (Council Tax: B).



13-15 High Street, Tettenhall, Wolverhampton, WV6 8QS  
Tel: 01902 749974 Email: [lettings@berrimaneaton.co.uk](mailto:lettings@berrimaneaton.co.uk) [berrimaneaton.co.uk](http://berrimaneaton.co.uk)