

# BERRIMAN EATON

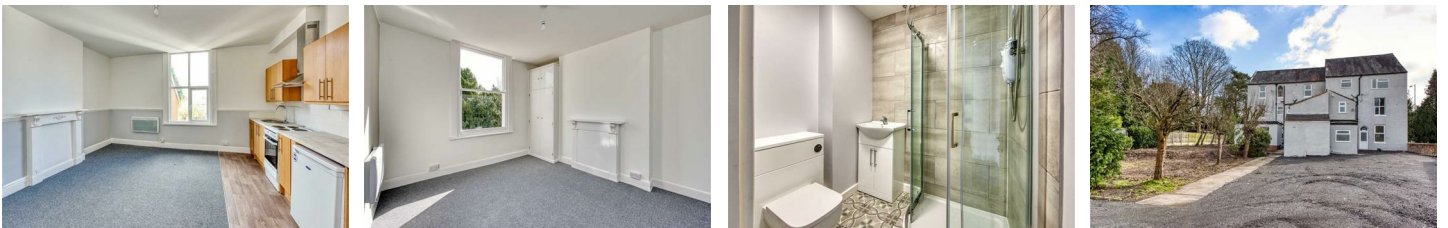


228 Penn Road, Wolverhampton WV4 4AA

£650 Per Month



A recently refurbished 1 bedroom apartment to rent in close proximity to Wolverhampton City Centre with parking to rear. The property in brief comprises living area, contemporary kitchen, double bedroom and bathroom. The development benefits from rear parking. Available from the end of May on an Furnished basis. A payment of one weeks rent is to be paid upon acceptance of applying for the property. Security deposit of £750.00 is payable upon completion. (EPC: TBC) (Council Tax Band: A)



13-15 High Street, Tettenhall, Wolverhampton, WV6 8QS  
Tel: 01902 749974 Email: [lettings@berrimaneaton.co.uk](mailto:lettings@berrimaneaton.co.uk) [berrimaneaton.co.uk](http://berrimaneaton.co.uk)