

Aston Road, Deeside, CH5 1TJ

Offers in the Region of £180,000

Grow
SALES + LETTINGS

- 3 Bedrooms
- End Terrace House
- Modern Kitchen and Bathroom
- Spacious Rear Garden
- Off Road Parking
- Detached Annex with Bathroom
- Easy Access to Chester and North Wales
- Close to Many Local Amenities



A beautifully presented 3 bedroom end terrace house set in a popular location offering excellent access to Chester, Manchester, Liverpool and North Wales.

A perfect family home with a modern larger than average kitchen, stylish bathroom and a separate annex that would make an ideal guest house, home office or work studio.

There is a driveway for circa 3 vehicles and a 60ft garden to the rear



Grow Property North Wales

Phone: 01352 250 223, Email: sales@growproperty.co.uk

www.growproperty.co.uk

Front

Set back from the road with a front garden laid to lawn, hardstanding with off road parking for circa 3 vehicles. Composite door opening to the detached annex Pathway leading to a composite door opening to the hallway

Entrance Hallway

Door to under stairs storage cupboard, doors to lounge and kitchen, wall mounted radiator, stairs to first floor, wood laminate floor, wall mounted radiator

Lounge 15' 9" x 13' 6" (4.80m x 4.11m)

PVC double glazed box bay window to the front, wall mounted radiator, wall mounted fire with timber mantle and marble backpiece and hearth, wood laminate floor, coved ceiling



Kitchen/Diner 15' 8" x 14' 5" (4.77m x 4.39m)

A range of modern wall, drawer and base units, worktop with inset stainless steel 1.5 sink unit with mixer tap, space for fridge freezer, plumbing for washing machine and plumbing for dishwasher, inset hob with built in double oven under and canopy extractor fan over. Tiled splashbacks and tiled floor PVC double glazed window to the rear, composite door opening to the rear garden



First Floor

White panelled doors to bedrooms and bathroom, over stairs storage cupboard housing a Worcester combination boiler fitted in 2022, access to roof space

Bathroom 7' 8" x 5' 8" (2.34m x 1.73m)

A modern suite comprising a p-shaped bath with power shower plumbed in over, close coupled WC and vanity wash hand basin with cupboards under, tiled walls and floor, obscure PVC double glazed window to the rear, chrome wall mounted towel radiator



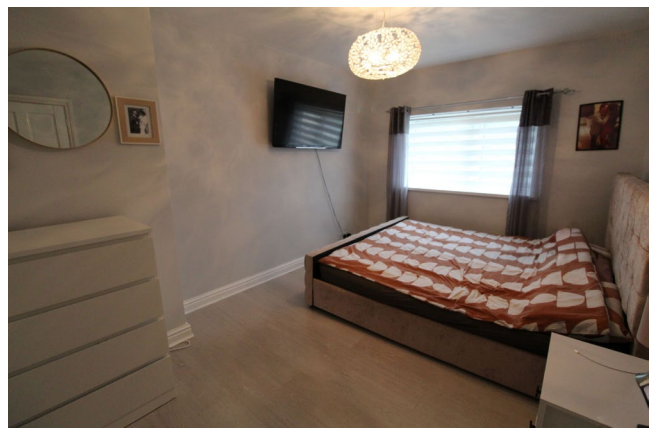
Bedroom Two 13' 6" x 8' 4" (4.11m x 2.54m)

PVC double glazed window to the front, wall mounted radiator, wood laminate floor



Bedroom One 13' 9" x 9' 6" (4.19m x 2.89m)

PVC double glazed window to the rear, wall mounted radiator, wood laminate floor



Bedroom Three 8' 8" x 7' 7" (2.64m x 2.31m)
 PVC double glazed window to the front, wall mounted radiator



Annex / Workshop / Guest House 13' 5" x 11' 5" (4.09m x 3.48m)

A self contained single story unit with composite door to the front, PVC double glazed window to the rear, wood laminate floor, door to storage cupboard and door to bathroom

Annex Bathroom 6' 2" x 3' 4" (1.88m x 1.02m)

Close coupled WC, wall mounted wash hand basin, obscure PVC double glazed window to the side, wood laminate floor



Rear Garden

A 60ft established garden laid to lawn with mature shrubs and trees, circular paved patio feature, timber fencing surround, patio area with iron gazebo feature. Access to Annex

