



27 CARDIFF STREET, ABERDARE, CF44 7DP

TEL: 01685 878000 FAX: 01685 878000



## Gwawr Street

Aberdare, CF44 6YP

£110,000



Nestled on the charming Gwawr Street in Aberdare, this delightful property presents an excellent opportunity for first-time buyers seeking a comfortable and convenient home. The property boasts three generously sized bedrooms, providing ample space for relaxation and personalisation. The well-appointed shower room ensures that daily routines are both efficient and enjoyable.

The property features two inviting reception rooms, perfect for entertaining guests or enjoying quiet evenings with family. The layout is designed to maximise space and light, creating a warm and welcoming atmosphere throughout.

One of the standout features of this property is the generous garden, offering a private outdoor space for gardening enthusiasts or simply a tranquil area to unwind after a busy day.

Situated in a location with excellent road links, commuting to nearby towns and cities is made easy. Additionally, the proximity to local schools makes this property particularly appealing for families.

In summary, this property on Gwawr Street is a fantastic choice for those looking to step onto the property ladder, combining comfort, convenience, and a sense of community in one attractive package. Don't miss the chance to make this charming home your own.





Entrance Hall

Reception Room 1 10'11 x 8'08 (3.33m x 2.64m)

UPVC double glazed window to front. Radiator.

Reception Room 2 11'05 x 10'07 (3.48m x 3.23m)

UPVC double glazed window to rear. Radiator.

Kitchen 11'00 x 8'02 (3.35m x 2.49m)

UPVC double glazed window to rear. Radiator. Provisions for cooker, washing machine and fridge/freezer.

Landing

Bedroom 1 9'10 x 6'11 (3.00m x 2.11m)

UPVC double glazed window to front. Radiator.

Bedroom 2 7'03 x 6'08 (2.21m x 2.03m)

UPVC double glazed window to front. Radiator.

Bedroom 3 9'08 x 9'02 (2.95m x 2.79m)

UPVC double glazed window to rear. Radiator.

Family Bathroom 11'00 x 8'00 (3.35m x 2.44m)

UPVC double glazed window to rear. Radiator. Shower. WC.

Outside

Garden shed. Patio. Grass lawn.

Disclaimer

N.B Whilst these particulars are intended to give a fair description of the property concerned, their accuracy is not guaranteed and any intending purchaser must satisfy himself by inspection or otherwise, as to the correctness of statements contained herein.

The particulars do not constitute an offer or contract, and statements herein are made without responsibility, or warranty on the part of the Vendor or Manning Estate Agents, neither of whom can hold themselves responsible for expenses incurred should the property no longer be available. Items shown in photographs are NOT included unless specifically mentioned in particulars. They may however be available by separate negotiation.

The Property Misdescription Act 1991

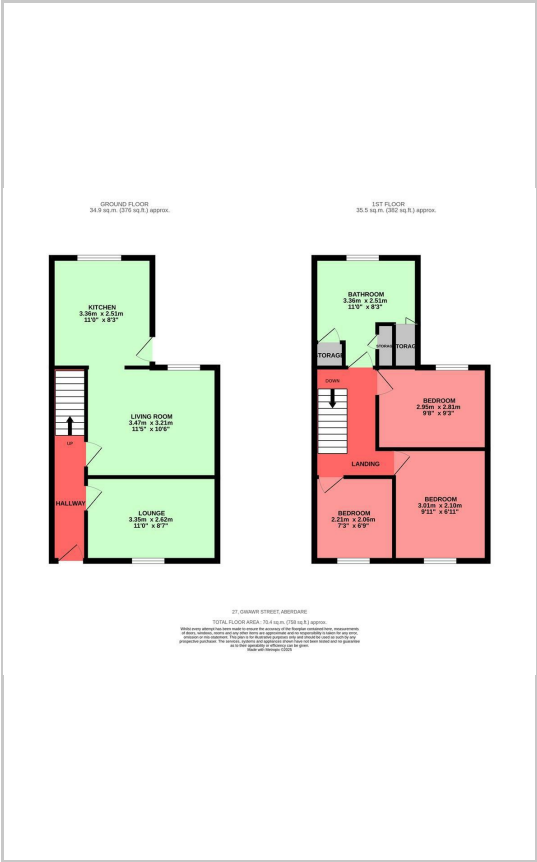
The Agent has not tested any apparatus, equipment, fixtures and fittings or services and so cannot verify that they are in working order or fit for the purpose. A buyer is advised to obtain verification from their Solicitor or Surveyor. References to the Tenure of the property are based on information supplied by the seller. The Agent has not sight of the title documents. A Buyer is advised to obtain verification from their Solicitor.

You may download, store and use the material for your own personal use and research. You may not republish, retransmit, redistribute or otherwise make the material available to any party or make the same available on any website

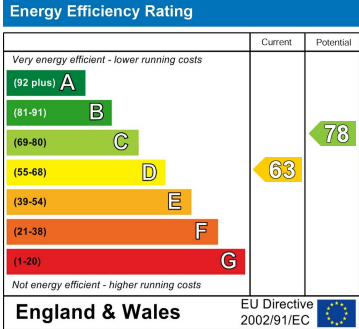
Area Map



Floor Plans



Energy Efficiency Graph



These particulars, whilst believed to be accurate are set out as a general outline only for guidance and do not constitute any part of an offer or contract. Intending purchasers should not rely on them as statements of representation of fact, but must satisfy themselves by inspection or otherwise as to their accuracy. No person in this firms employment has the authority to make or give any representation or warranty in respect of the property.