



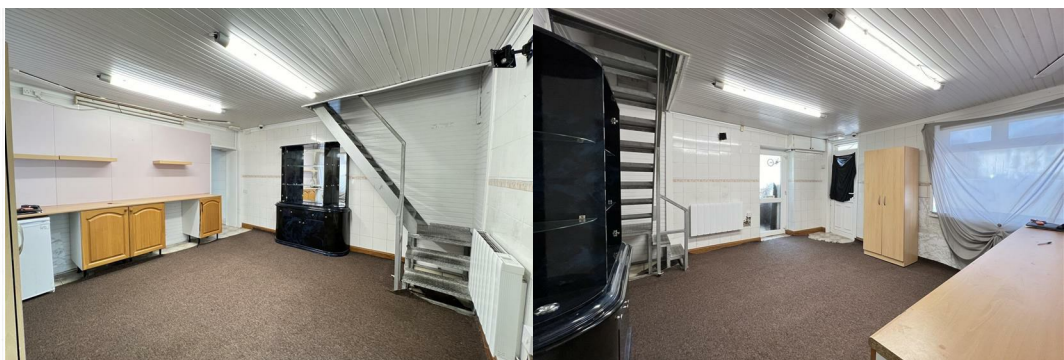
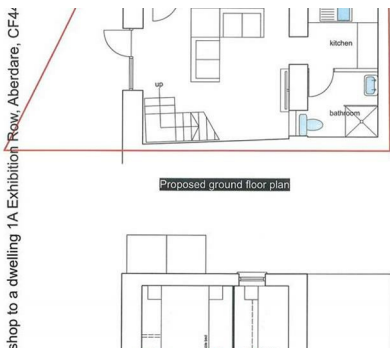
Exhibition Row

Aberdare, CF44 0YD

£89,995



- ** NO ONWARD CHAIN
- ** IDEAL DEVELOPMENT PROJECT
- ** SOUGHT AFTER VILLAGE LOCATION
- ** END OF TERRACE FORMER COMMERCIAL PREMISES
- ** PLANNING PERMISSION FOR CHANGE OF USE INTO A RESIDENTIAL HOUSE
- ** FRONT FORECOURT GARDEN WITH SIDE ACCESS
- ** ENTRANCE PORCH. 2 DOWNSTAIRS ROOMS.
- ** UPSTAIRS SHOWER ROOM, 2 ROOMS.
- ** ELECTRIC RADIATORS.DOUBLE GLAZED WINDOWS AND DOOR
- ** WE ARE ADVISED THAT THE PROPERTY IS FREEHOLD



Entrance Porch

Double glazed windows and front door.

Room 1 14' x 13'6 (4.27m x 4.11m)

Upvc double glazed window to front aspect. Electric radiator. Stairs to first floor

Lean-to side porch 9'3 x 4 (2.82m x 1.22m)

Access to rear yard.

2nd Room/Kitchen 12'11 x 6'8 (3.94m x 2.03m)

Stainless steel sink unit. Electric radiator.

2nd Front Entrance Porch 8'2 x 4'1 (2.49m x 1.24m)

Upvc double glazed windows and door.

Stairs to Floor

Room 1 10'11 x 6'10 (3.33m x 2.08m)

Upvc double glazed window to side aspect. Electric radiator.

Room 2 7'7 x 7'10 (2.31m x 2.39m)

Shower room

With w.c., wash hand basin and shower enclosure. Upvc double glazed window to front aspect.

Disclaimer

N.B Whilst these particulars are intended to give a fair description of the property concerned, their accuracy is not guaranteed and any intending purchaser must satisfy himself by inspection or otherwise, as to the correctness of statements contained herein.

The particulars do not constitute an offer or contract, and statements herein are made without responsibility, or warranty on the part of the Vendor or Manning Estate Agents, neither of whom can hold themselves responsible for expenses incurred should the property no longer be available. Items shown in photographs are NOT included unless specifically mentioned in particulars. They may however be available by separate negotiation.

The Property Misdescription Act 1991

The Agent has not tested any apparatus, equipment, fixtures and fittings or services and so cannot verify that they are in working order or fit for the purpose. A buyer is advised to obtain verification from their Solicitor or Surveyor. References to the Tenure of the property are based on information supplied by the seller. The Agent has not sight of the title documents. A Buyer is advised to obtain verification from their Solicitor.

You may download, store and use the material for your own personal use and research. You may not republish, retransmit, redistribute or otherwise make the material available to any party or make the same available on any website

These particulars, whilst believed to be accurate are set out as a general outline only for guidance and do not constitute any part of an offer or contract. Intending purchasers should not rely on them as statements of representation of fact, but must satisfy themselves by inspection or otherwise as to their accuracy. No person in this firm's employment has the authority to make or give any representation or warranty in respect of the property.

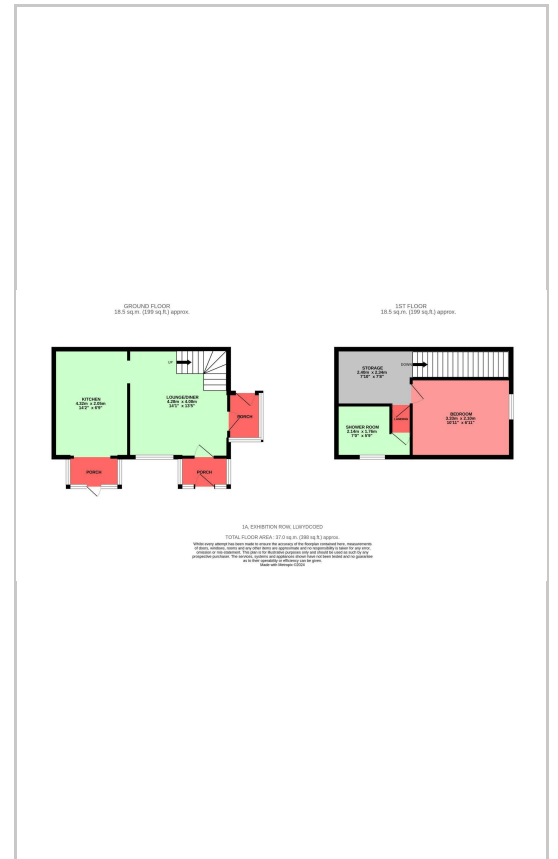
Gloucester House, 29 Whitcombe Street, Aberdare, CF44 7AU

Tel: 01685 878000 Email: info@manningestateagents.co.uk <https://www.manningestateagents.co.uk>

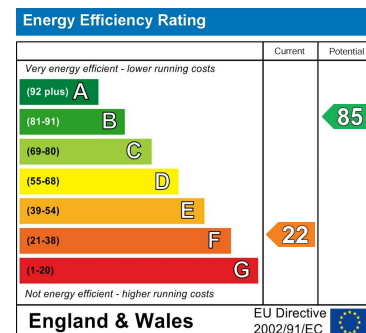
Area Map



Floor Plans



Energy Efficiency Graph



Gloucester House, 29 Whitcombe Street, Aberdare, CF44 7AU

Tel: 01685 878000 Email: info@manningestateagents.co.uk <https://www.manningestateagents.co.uk>